

EML1 RABBIT PAB

货号: S219407

产品全名: EML1 兔多抗

基因符号: BH; EMAP; ELP79; EMAPL; HuEMAP

UNIPROT ID: O00423 (Gene Accession - BC033043)

背景: 人 echinoderm microtubule-associated protein-like 是一个强候选基因，用于 Usher 综合征 I 型 A 基因。Usher 综合征 (USHs) 是一组遗传性耳聋、视网膜色素沉着和可变 onset 和严重程度的前庭功能障碍。疾病过程在 USHs 中涉及整个大脑，并不局限于后颅窝或听觉和视觉系统。USHs 被归类为 I 型 (USH1A, USH1B, USH1C, USH1D, USH1E 和 USH1F)，II 型 (USH2A 和 USH2B) 和 III 型 (USH3)。I 型是最严重的形式。负责这三种类型的基因位点均已映射。两种转录变体编码不同的 isoforms 已在此基因中被发现。[provided by RefSeq, Jul 2008]

抗原: Fusion protein of human EML1

经过测试的应用: ELISA, IHC

推荐稀释比: IHC: 100-300; ELISA: 5000-10000

种属反应性: Rabbit

克隆性: Rabbit Polyclonal

亚型: Immunogen-specific rabbit IgG

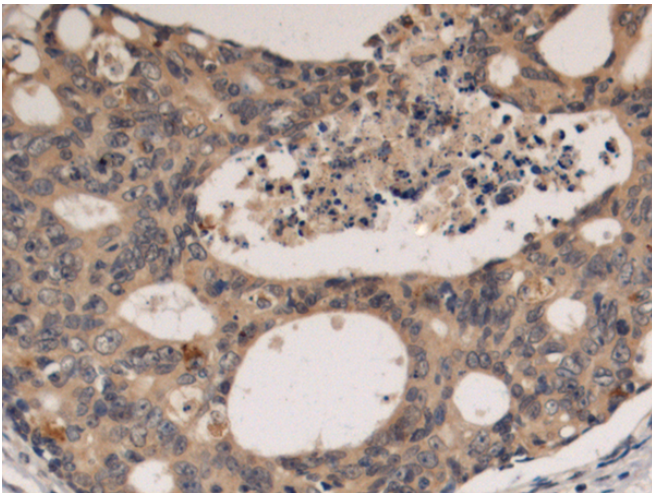
纯化: Antigen affinity purification

种属反应性: Human, Mouse, Rat

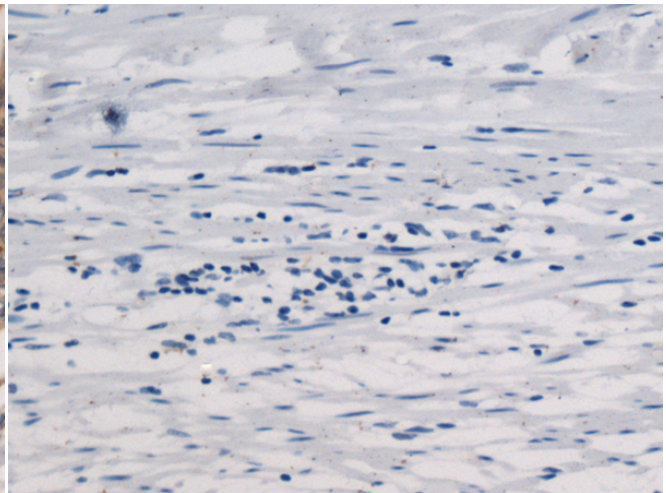
成分: PBS (without Mg²⁺ and Ca²⁺), pH 7.4, 150 mM NaCl, 0.05% Sodium Azide and 40% glycerol

研究领域: Signal Transduction

储存和运输: Store at -20°C. Avoid repeated freezing and thawing



Immunohistochemistry analysis of paraffin embedded Human colorectal cancer tissue using 219407 (EML1 Antibody) at a dilution of 1/130 (Cytoplasm).



In comparison with the IHC on the left, the same paraffin-embedded Human colorectal cancer tissue is first treated with the fusion protein and then with 219407 (Anti-EML1 Antibody) at dilution 1/130.