

EMERIN RABBIT MAB

货号: N262177

产品全名: Emerin 兔单克隆抗体

基因符号 STA; EDMD; LEMD5

UNIPROT ID: P50402

背景: Emerin may regulate gene expression through binding to other transcriptional regulators. Emerin binds to β -catenin and inhibits its nuclear accumulation. Recent studies demonstrate that Emerin is required for HIV-1 infectivity.

抗原: A synthetic peptide of human Emerin

经过测试的应用: WB,IHC-F,IHC-P,ICC/IF

推荐稀释比: WB: 1/500-1/1000 IHC: 1/50-1/100 IF: 1/50-1/200

种属反应性: Rabbit

克隆性: Rabbit Monoclonal

克隆编号: R02-5J7

分子量: Calculated MW: 29 kDa; Observed MW: 35 kDa

亚型: IgG

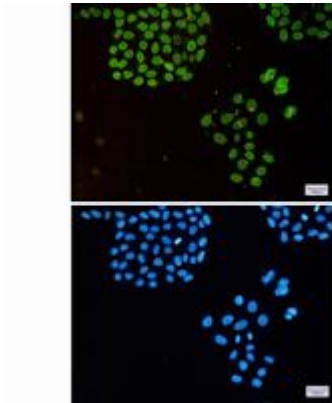
纯化: Affinity Purified

种属反应性: Human,Mouse

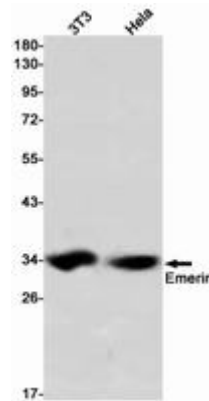
成分: PBS (without Mg^{2+} and Ca^{2+}), pH 7.3 containing 50% glycerol, 0.5% BSA and 0.02% sodium azide

研究领域: Signal Transduction

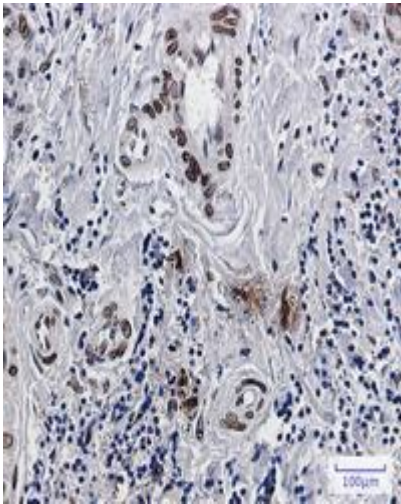
储存和运输: Store at $-20^{\circ}C$. Avoid repeated freezing and thawing



Immunocytochemistry analysis of Emerin (green) in HeLa using Emerin antibody, and DAPI (blue)



Western blot analysis of Emerin in 3T3, HeLa lysates using Emerin antibody.



Immunohistochemistry analysis of paraffin-embedded Human breast cancer using Emerin antibody. High-pressure and temperature Sodium Citrate pH 6.0 was used for antigen retrieval.