

EMC7 RABBIT PAB

货号: S221641

产品全名: EMC7 兔多抗

基因符号: HT022; C11orf3; C15orf24; ORF1-FL1

UNIPROT ID: Q9NPA0 (Gene Accession - NP_064539)

背景: Has been termed C11orf3, but is not the official C11orf3 as defined by HGNC and furthermore maps to chromosome 15.

抗原: Synthetic peptide of human EMC7

经过测试的应用: ELISA, WB, IHC

推荐稀释比: IHC: 50-200;WB: 500-2000;ELISA: 5000-10000

种属反应性: Rabbit

克隆性: Rabbit Polyclonal

亚型: Immunogen-specific rabbit IgG

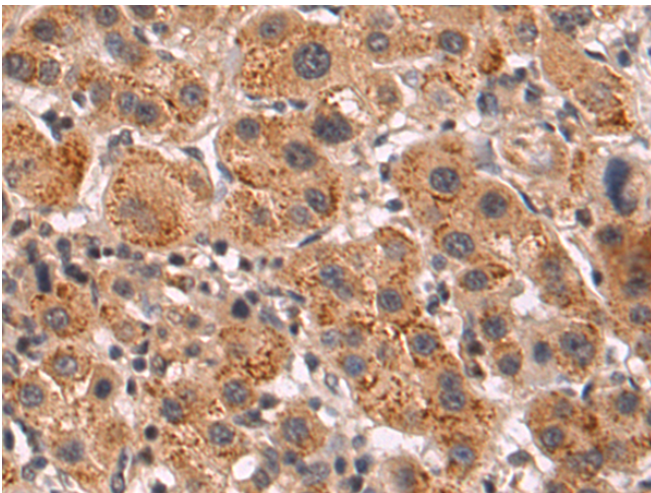
纯化: Antigen affinity purification

种属反应性: Human, Mouse

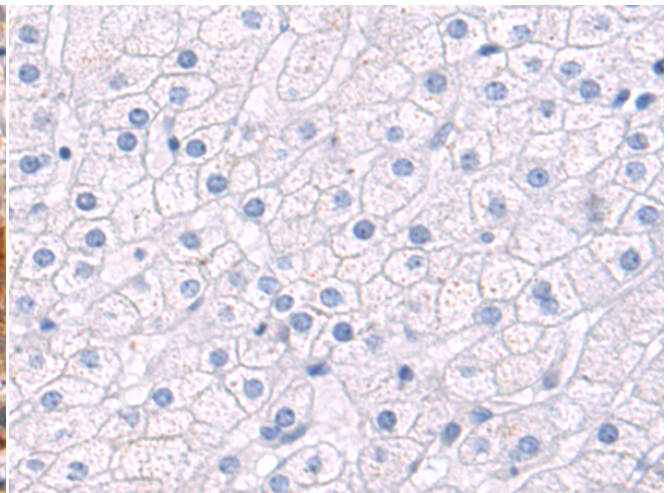
成分: PBS (without Mg²⁺ and Ca²⁺), pH 7.4, 150 mM NaCl, 0.05% Sodium Azide and 40% glycerol

研究领域: Cell Biology

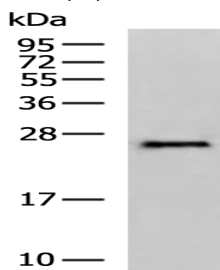
储存和运输: Store at -20°C. Avoid repeated freezing and thawing



Immunohistochemistry analysis of paraffin embedded Human liver cancer tissue using 221641(EMC7 Antibody) at a dilution of 1/50(Cytoplasm).



In comparison with the IHC on the left, the same paraffin-embedded Human liver cancer tissue is first treated with the synthetic peptide and then with 221641(Anti-EMC7 Antibody) at dilution 1/50.



Gel: 12%SDS-PAGE, Lysate: 40 µg;

Lane: Mouse skeletal muscle tissue lysate;

Primary antibody: 221641(EMC7 Antibody) at dilution 1/400;

Secondary antibody: HRP-conjugated Goat anti rabbit IgG at 1/5000 dilution;

Exposure time: 1 minute