

EMC1 RABBIT PAB

货号: S218938

产品全名: EMC1 兔多抗

基因符号: CAVIPMR; KIAA0090

UNIPROT ID: Q8N766 (Gene Accession - BC034589)

背景: This gene encodes a single-pass type I transmembrane protein, which is a subunit of the endoplasmic reticulum membrane protein complex (EMC). Multiple alternatively spliced transcript variants encoding different isoforms have been found for this gene.

抗原: Fusion protein of human EMC1

经过测试的应用: ELISA, IHC

推荐稀释比: IHC: 40-200; ELISA: 5000-10000

种属反应性: Rabbit

克隆性: Rabbit Polyclonal

亚型: Immunogen-specific rabbit IgG

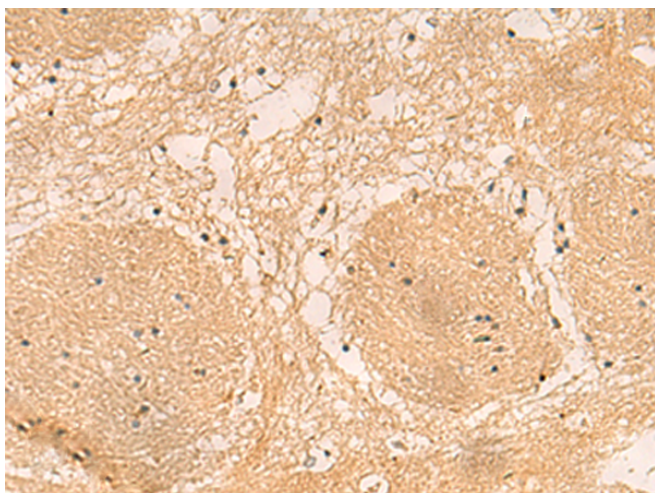
纯化: Antigen affinity purification

种属反应性: Human, Mouse, Rat

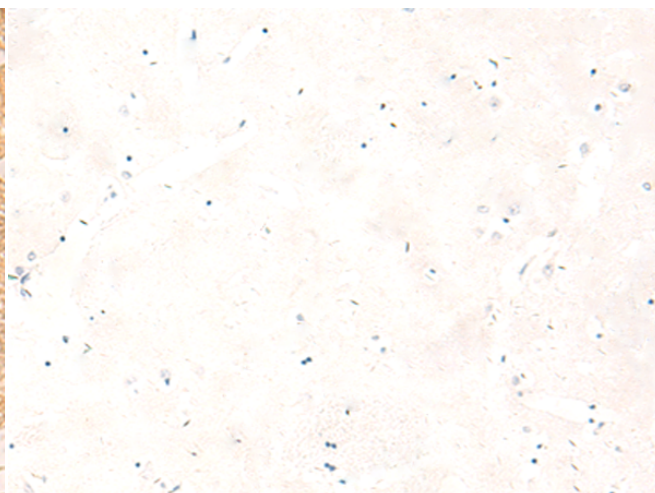
成分: PBS (without Mg²⁺ and Ca²⁺), pH 7.4, 150 mM NaCl, 0.05% Sodium Azide and 40% glycerol

研究领域: Cell Biology

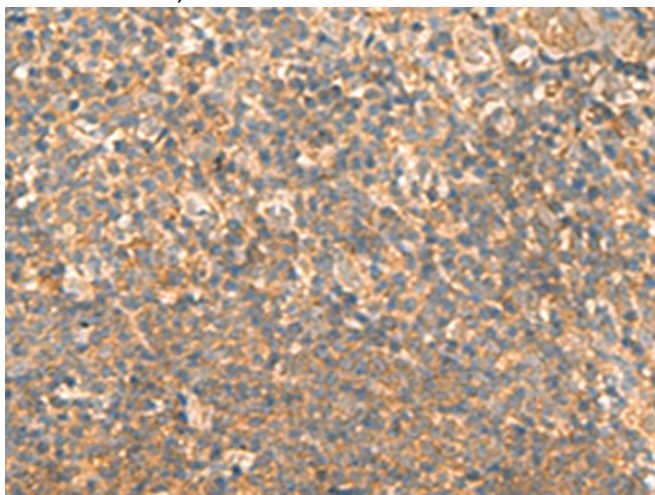
储存和运输: Store at -20°C. Avoid repeated freezing and thawing



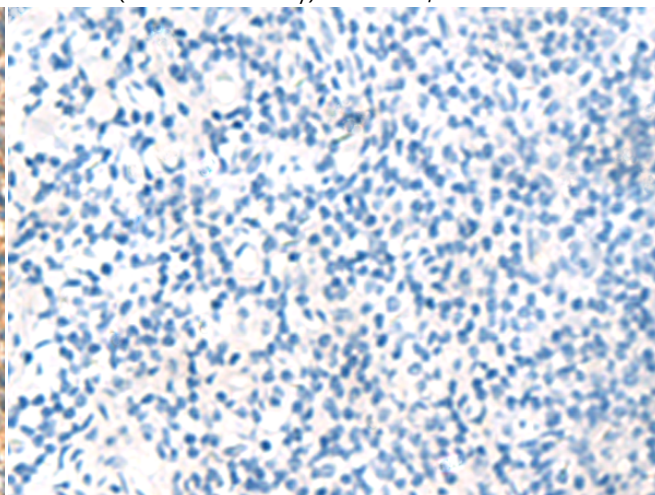
Immunohistochemistry analysis of paraffin embedded Human brain tissue using 218938(EMC1 Antibody) at a dilution of 1/40(Cytoplasm or Cell membrane).



In comparison with the IHC on the left, the same paraffin-embedded Human brain tissue is first treated with the fusion protein and then with 218938(Anti-EMC1 Antibody) at dilution 1/40.



The image on the left is immunohistochemistry of paraffin-embedded Human tonsil tissue using 218938(Anti-EMC1 Antibody) at a dilution of 1/40.



In comparison with the IHC on the left, the same paraffin-embedded Human tonsil tissue is first treated with fusion protein and then with D225543(Anti-EMC1 Antibody) at dilution 1/40.



Product Description

Pioneering GTPase and Oncogene Product Development since 2010
