

ELOVL5 RABBIT PAB

货号: S222347

产品全名: ELOVL5 兔多抗

基因符号: HELO1; SCA38; dJ483K16.1

UNIPROT ID: Q9NYP7 (Gene Accession - NP_068586)

背景: This gene belongs to the ELO family. It is highly expressed in the adrenal gland and testis, and encodes a multi-pass membrane protein that is localized in the endoplasmic reticulum. This protein is involved in the elongation of long-chain polyunsaturated fatty acids. Mutations in this gene have been associated with spinocerebellar ataxia-38 (SCA38). Alternatively spliced transcript variants have been found for this gene.

抗原: Synthetic peptide of human ELOVL5

经过测试的应用: ELISA, WB, IHC

推荐稀释比: IHC: 50-200;WB: 500-2000;ELISA: 5000-10000

种属反应性: Rabbit

克隆性: Rabbit Polyclonal

亚型: Immunogen-specific rabbit IgG

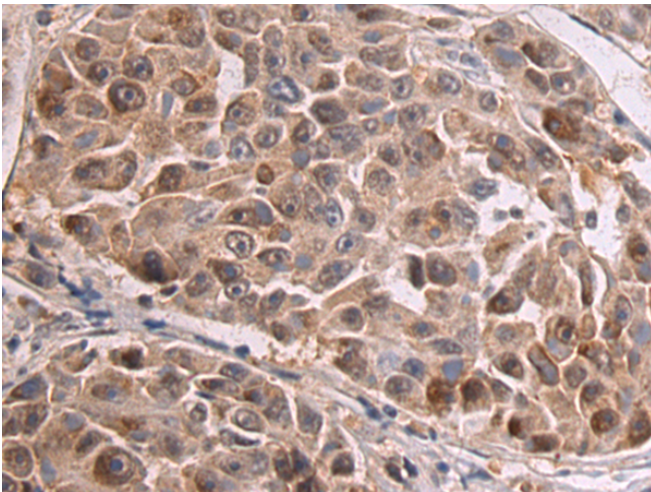
纯化: Antigen affinity purification

种属反应性: Human, Mouse

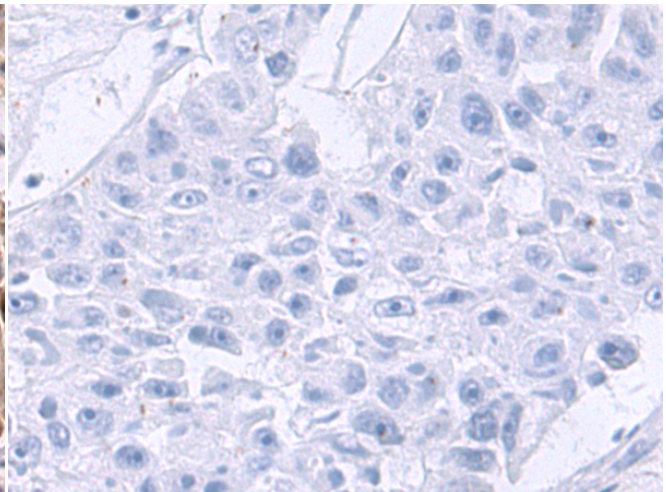
成分: PBS (without Mg²⁺ and Ca²⁺), pH 7.4, 150 mM NaCl, 0.05% Sodium Azide and 40% glycerol

研究领域: Cardiovascular, Signal Transduction, Metabolism

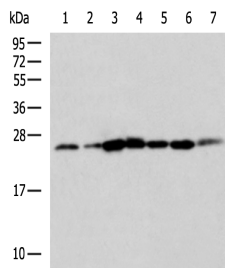
储存和运输: Store at -20°C. Avoid repeated freezing and thawing



Immunohistochemistry analysis of paraffin embedded Human liver cancer tissue using 222347 (ELOVL5 Antibody) at a dilution of 1/50 (Cytoplasm and Cell membrane).



In comparison with the IHC on the left, the same paraffin-embedded Human liver cancer tissue is first treated with the synthetic peptide and then with 222347 (Anti-ELOVL5 Antibody) at dilution 1/50.



Gel: 12%SDS-PAGE, Lysate: 40 µg;

Lane 1-7: Mouse fat tissue, Jurkat cell, RAW264.7 cell, Mouse brain tissue, Hela cell, Human testis tissue, Mouse adrenal gland tissue lysates;

Primary antibody: 222347 (ELOVL5 Antibody) at dilution 1/550;

Secondary antibody: HRP-conjugated Goat anti rabbit IgG at 1/5000 dilution;

Exposure time: 15 seconds



Product Description

Pioneering GTPase and Oncogene Product Development since 2010
