

ELOVL1 RABBIT PAB

货号: S217400

产品全名: ELOVL1 兔多抗

基因符号: Ssc1; IKSHD; CGI-88

UNIPROT ID: Q9BW60 (Gene Accession - BC000618)

背景: Enables fatty acid elongase activity. Involved in fatty acid biosynthetic process and sphingolipid biosynthetic process. Located in endoplasmic reticulum.

抗原: Fusion protein of human ELOVL1

经过测试的应用: ELISA, WB, IHC

推荐稀释比: IHC: 50-200;WB: 1000-5000;ELISA: 5000-10000

种属反应性: Rabbit

克隆性: Rabbit Polyclonal

亚型: Immunogen-specific rabbit IgG

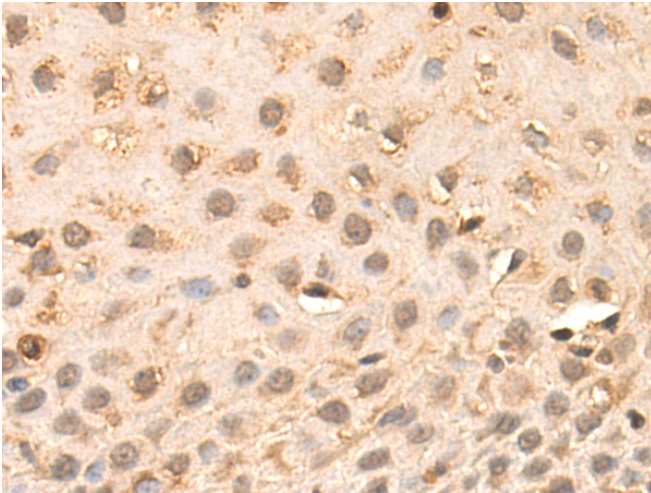
纯化: Antigen affinity purification

种属反应性: Human, Mouse

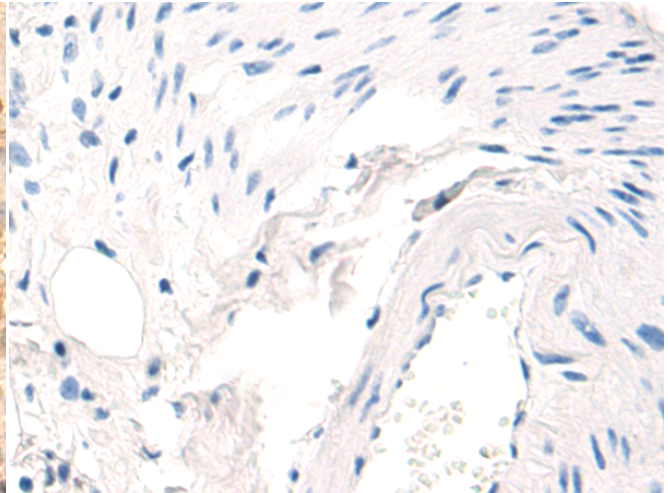
成分: PBS (without Mg²⁺ and Ca²⁺), pH 7.4, 150 mM NaCl, 0.05% Sodium Azide and 40% glycerol

研究领域: Metabolism, Cardiovascular

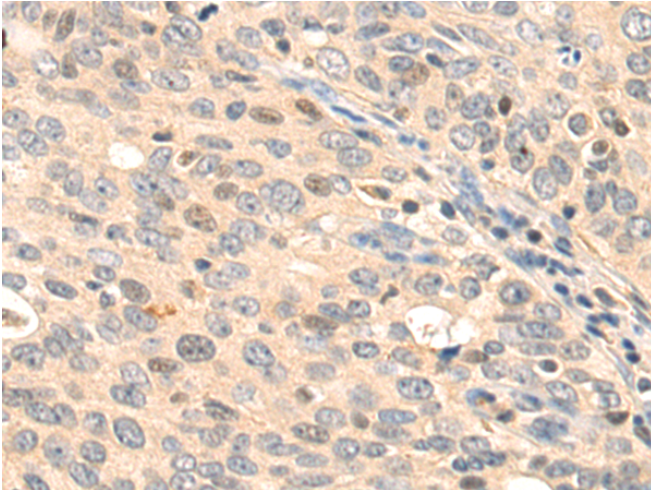
储存和运输: Store at -20°C. Avoid repeated freezing and thawing



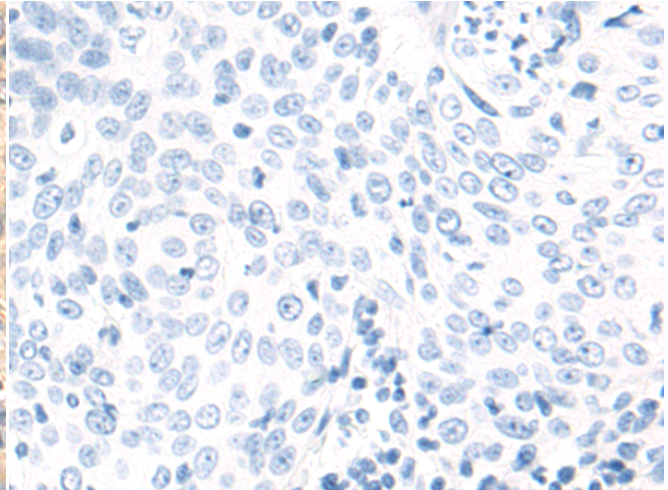
Immunohistochemistry analysis of paraffin embedded Human esophagus cancer tissue using 217400(ELOVL1 Antibody) at a dilution of 1/70(Cytoplasm and Nucleus).



In comparison with the IHC on the left, the same paraffin-embedded Human esophagus cancer tissue is first treated with the fusion protein and then with 217400(Anti-ELOVL1 Antibody) at dilution 1/70.



The image on the left is immunohistochemistry of paraffin-embedded Human cervical cancer tissue using 217400(Anti-ELOVL1 Antibody) at a dilution of 1/70.



In comparison with the IHC on the left, the same paraffin-embedded Human cervical cancer tissue is first treated with fusion protein and then with D222292(Anti-ELOVL1 Antibody) at dilution 1/70.

kDa

130 —
100 —
70 —
55 —
35 —
25 —
15 —



Gel: 8%SDS-PAGE, Lysate:40 µg;
Lane: Mouse brain tissue lysates;
Primary antibody: 217400(ELOVL1 Antibody) at dilution 1/1000;
Secondary antibody: HRP-conjugated Goat anti rabbit IgG at 1/5000 dilution;
Exposure time: 40 seconds



Product Description

Pioneering GTPase and Oncogene Product Development since 2010
