

ELONGATION FACTOR 1A1 RABBIT MAB

货号: N263308

产品全名: Elongation Factor 1A1 兔单克隆抗体

基因符号 EEF1A1; CCS-3; CCS3; EEF-1; EEF1A; EF-Tu; EF1A; GRAF-1EF; LENG7; PTII; eEF1A-1

UNIPROT ID: P68104

背景: This protein promotes the GTP-dependent binding of aminoacyl-tRNA to the A-site of ribosomes during protein biosynthesis.

抗原: A synthetic peptide of human eEF1A1/EF-Tu

经过测试的应用: WB,IHC-F,IHC-P,ICC/IF

推荐稀释比: WB: 1/500-1/1000 IHC: 1/50-1/100 IF: 1/50-1/200

种属反应性: Rabbit

克隆性: Rabbit Monoclonal

克隆编号: R04-3H4

分子量: Calculated MW: 50 kDa; Observed MW: 50 kDa

亚型: IgG

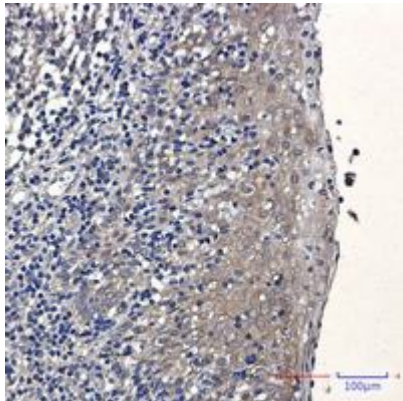
纯化: Affinity Purified

种属反应性: Human,Rat

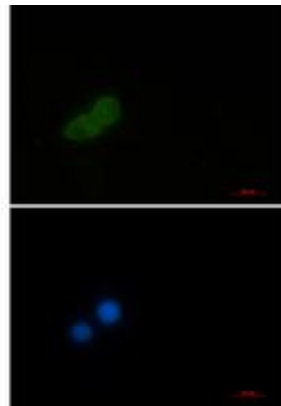
成分: PBS (without Mg²⁺ and Ca²⁺), pH 7.3 containing 50% glycerol, 0.5% BSA and 0.02% sodium azide

研究领域: Epigenetics and Nuclear Signaling

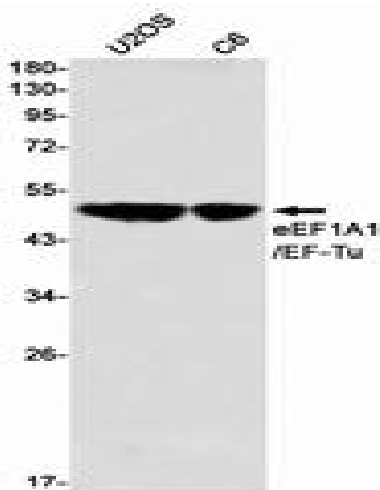
储存和运输: Store at -20°C. Avoid repeated freezing and thawing



Immunohistochemistry analysis of paraffin-embedded Human tonsil using eEF1A1/EFTu antibody. High-pressure and temperature Sodium Citrate pH 6.0 was used for antigen retrieval.



Immunocytochemistry analysis of Elongation Factor 1A1 (green) in HeLa using Elongation Factor 1A1 antibody, and DAPI (blue).



Western blot analysis of eEF1A1/EFTu in U2OS, C6 lysates using eEF1A1/EFTu antibody.