

## ELMO1 RABBIT MAB

货号: N262175

产品全名: ELMO1 兔单克隆抗体

基因符号 ELMO1; KIAA0281; Engulfment and cell motility protein 1; Protein ced-12 homolog

**UNIPROT ID:** Q92556

背景: Involved in cytoskeletal rearrangements required for phagocytosis of apoptotic cells and cell motility. Acts in association with DOCK1 and CRK.

抗原: A synthetic peptide of human ELMO1

经过测试的应用: WB,ICC/IF,IP

推荐稀释比: WB: 1/500-1/1000 IF: 1/50-1/200 IP: 1/20

种属反应性: Rabbit

克隆性: Rabbit Monoclonal

克隆编号: R03-7J6

分子量: Calculated MW: 84 kDa; Observed MW: 84 kDa

亚型: IgG

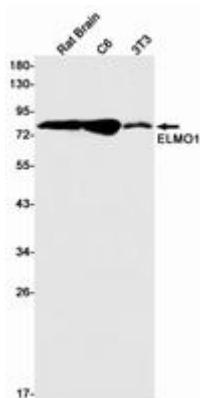
纯化: Affinity Purified

种属反应性: Human, Mouse and Rat

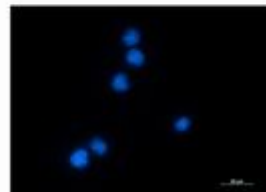
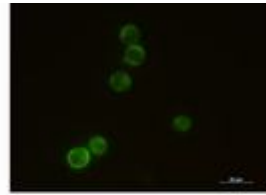
成分: PBS (without Mg<sup>2+</sup> and Ca<sup>2+</sup>), pH 7.3 containing 50% glycerol, 0.5% BSA and 0.02% sodium azide

研究领域: Signal Transduction

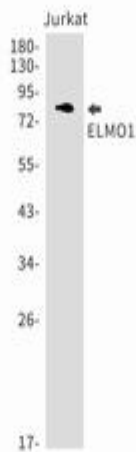
储存和运输: Store at -20°C. Avoid repeated freezing and thawing



Western blot analysis of ELMO1 in rat Brain, C6, 3T3 lysates using ELMO1 antibody



Immunocytochemistry analysis of ELMO1 (green) in Jurkat using ELMO1 antibody, and DAPI (blue).



Western blot analysis of ELMO1 in Jurkat lysates using ELMO1 antibody.