

ELL2 RABBIT PAB

货号: S221943

产品全名: ELL2 兔多抗

基因符号

UNIPROT ID: O00472 (Gene Accession - NP_036213)

背景: ELL2 (RNA polymerase II elongation factor ELL2) is a 640 amino acid nuclear protein that belongs to the ELL/occludin family. This family is defined by a highly conserved domain of approximately 100 amino residues found within all eukaryotic occludin proteins and the RNA polymerase II elongation factor ELL. These elongation factors activate elongation by suppressing transient pausing by polymerase at many sites along the DNA and govern its interaction with RNA polymerase II and the ternary elongation complex. ELL2 may also contain a novel type of RNA polymerase II interaction domain that is capable of negatively regulating polymerase activity in promoter-specific transcription initiation in vitro.

抗原: Synthetic peptide of human ELL2

经过测试的应用: ELISA, IHC

推荐稀释比: IHC: 20-100; ELISA: 5000-10000

种属反应性: Rabbit

克隆性: Rabbit Polyclonal

亚型: Immunogen-specific rabbit IgG

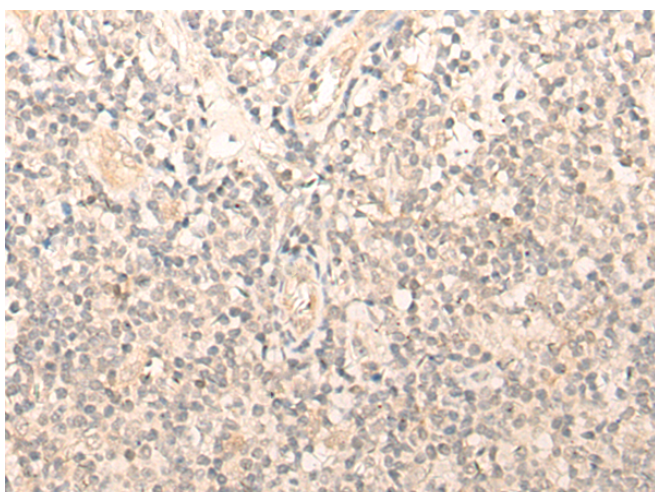
纯化: Antigen affinity purification

种属反应性: Human, Mouse

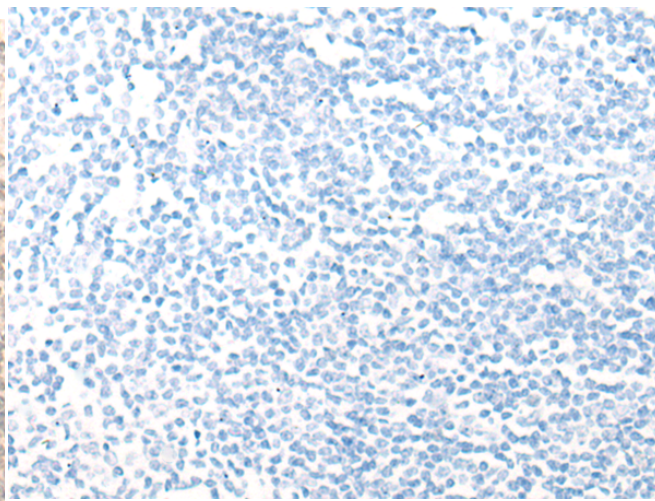
成分: PBS (without Mg²⁺ and Ca²⁺), pH 7.4, 150 mM NaCl, 0.05% Sodium Azide and 40% glycerol

研究领域: Epigenetics and Nuclear Signaling

储存和运输: Store at -20°C. Avoid repeated freezing and thawing



Immunohistochemistry analysis of paraffin embedded Human tonsil tissue using 221943(ELL2 Antibody) at a dilution of 1/30(Nucleus).



In comparison with the IHC on the left, the same paraffin-embedded Human tonsil tissue is first treated with the synthetic peptide and then with 221943(Anti-ELL2 Antibody) at dilution 1/30.