

## EIF4G1 RABBIT PAB

货号: N225280

产品全名: eIF4G1 兔多抗

基因符号 p220

**UNIPROT ID:** Q04637

背景: Component of the protein complex eIF4F, which is involved in the recognition of the mRNA cap, ATP-dependent unwinding of 5'-terminal secondary structure and recruitment of mRNA to the ribosome.

抗原: Peptide sequence around aa.1230~1234 (P-V-S-P-L) derived from Human eIF4G.

经过测试的应用: WB,IHC-P,ICC/IF

推荐稀释比: WB: 1/500-1/1000 IHC: 1/50-1/100 IF: 1/50-1/200

种属反应性: Rabbit

克隆性: Rabbit Polyclonal

分子量: Calculated MW: 175 kDa; Observed MW: 220 kDa

亚型: IgG

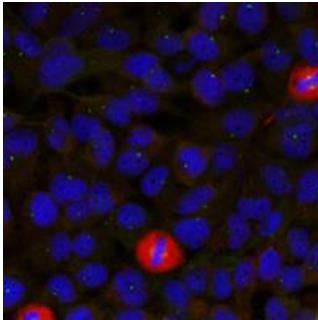
纯化: Affinity Chromatography

种属反应性: Human

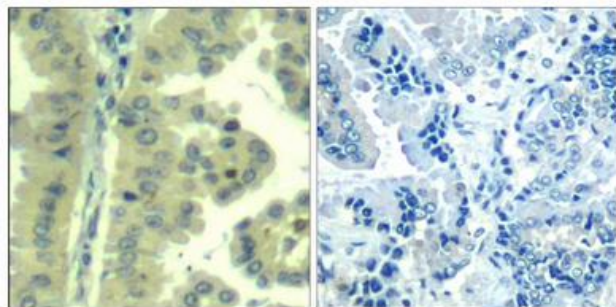
成分: PBS (without Mg<sup>2+</sup> and Ca<sup>2+</sup>), pH 7.3 containing 50% glycerol, 0.5% BSA and 0.02% sodium azide

研究领域: Epigenetics and Nuclear Signaling

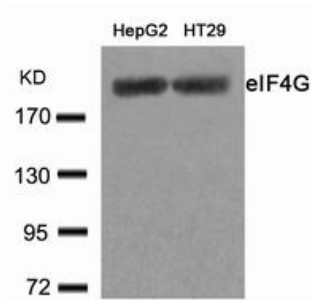
储存和运输: Store at -20°C. Avoid repeated freezing and thawing



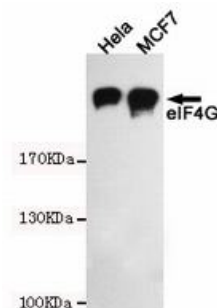
Immunofluorescence analysis of eIF4G1 in HeLa using eIF4G (Ab1232) antibody.



Immunohistochemistry analysis of paraffin-embedded Human lung carcinoma tissue using eIF4G (Ab1232) antibody (left) or the same antibody preincubated with blocking peptide (right). High-pressure and temperature Sodium Citrate pH 6.0 was used for antigen retrieval.



Western blot analysis of eIF4G1 in HepG2 and HT-29 lysates using eIF4G (Ab1232) antibody.



Western blot analysis of eIF4G1 in HeLa and MCF-7 lysates using eIF4G1 antibody