

EIF4E RABBIT MAB

货号: N262170

产品全名: eIF4E 兔单克隆抗体

基因符号 EIF4E; EIF4EL1; EIF4F; Eukaryotic translation initiation factor 4E; eIF-4E; eIF4E; eIF-4F 25 kDa subunit; mRNA cap-binding 蛋白

UNIPROT ID: P06730

背景: eIF4E, a protein modulates translation of maternal mRNAs in early embryos before the onset of zygotic transcription. eIF4E also influences the overall rate of translation. eIF4E binds to the 7 methyl GTP cap structure of eukaryotic mRNAs. Phosphorylation of eIF4E on serine 209 regulates the affinity of this protein for the 7 methyl GTP cap and/or RNA. Phosphorylation also enhances the interaction of eIF4E with eIF4G, which form a complex known as eIF4F. eIF4E phosphorylation is correlated with increased translational rate in a number of cell types.

抗原: A synthetic peptide of human eIF4E

经过测试的应用: WB, ICC/IF, IP

推荐稀释比: WB: 1/500-1/1000 IF: 1/50-1/200 IP: 1/20

种属反应性: Rabbit

克隆性: Rabbit Monoclonal

克隆编号: R08-1C5

分子量: Calculated MW: 25 kDa; Observed MW: 25 kDa

亚型: IgG

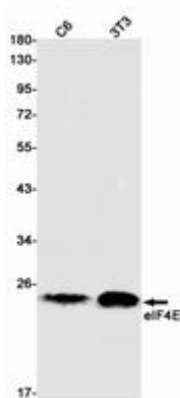
纯化: Affinity Purified

种属反应性: Human, Mouse and Rat

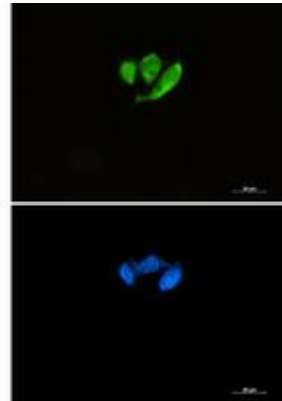
成分: PBS (without Mg²⁺ and Ca²⁺), pH 7.3 containing 50% glycerol, 0.5% BSA and 0.02% sodium azide

研究领域: Hypoxia Signal Transduction & Hypoxia-induced

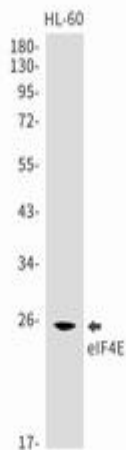
储存和运输: Store at -20°C. Avoid repeated freezing and thawing



Western blot analysis of eIF4E in C6, 3T3 lysates using eIF4E antibody



Immunocytochemistry analysis of eIF4E (green) in HCT116 using eIF4E antibody, and DAPI (blue).



Western blot analysis of eIF4E in HL-60 lysates using eIF4E antibody.