

EIF4B RABBIT PAB

货号: S217392

产品全名: EIF4B 兔多抗

基因符号 EIF-4B; PRO1843

UNIPROT ID: P23588 (Gene Accession - BC073139)

背景: Required for the binding of mRNA to ribosomes. Functions in close association with EIF4-F and EIF4-A. Binds near the 5'-terminal cap of mRNA in presence of EIF-4F and ATP. Promotes the ATPase activity and the ATP-dependent RNA unwinding activity of both EIF4-A and EIF4-F.

抗原: Fusion protein of human EIF4B

经过测试的应用: ELISA, IHC

推荐稀释比: IHC: 100-300; ELISA: 5000-10000

种属反应性: Rabbit

克隆性: Rabbit Polyclonal

亚型: Immunogen-specific rabbit IgG

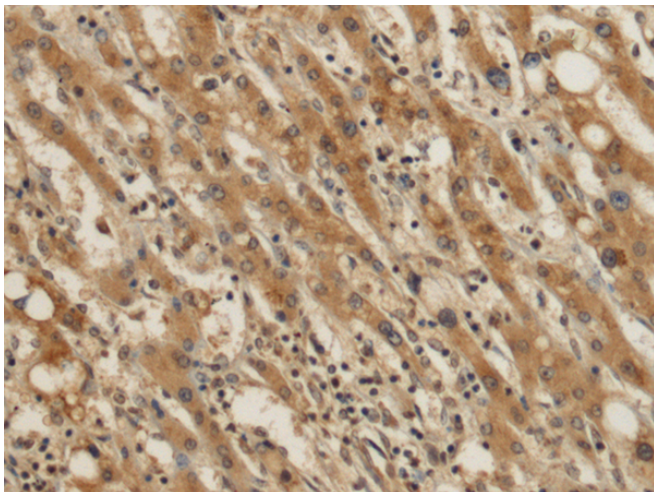
纯化: Antigen affinity purification

种属反应性: Human, Mouse

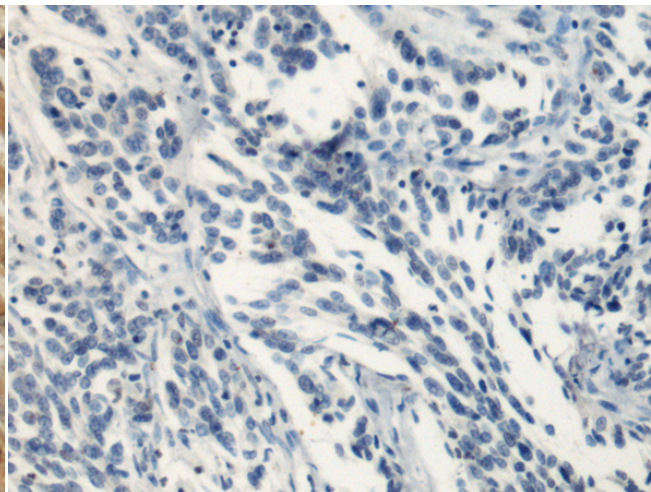
成分: PBS (without Mg²⁺ and Ca²⁺), pH 7.4, 150 mM NaCl, 0.05% Sodium Azide and 40% glycerol

研究领域: Epigenetics and Nuclear Signaling

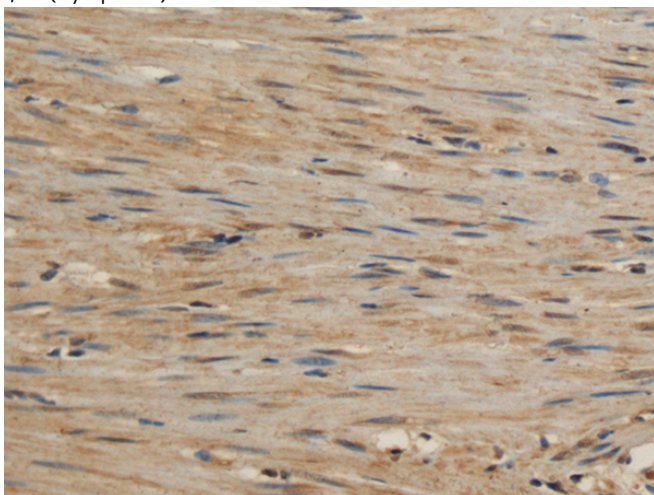
储存和运输: Store at -20°C. Avoid repeated freezing and thawing



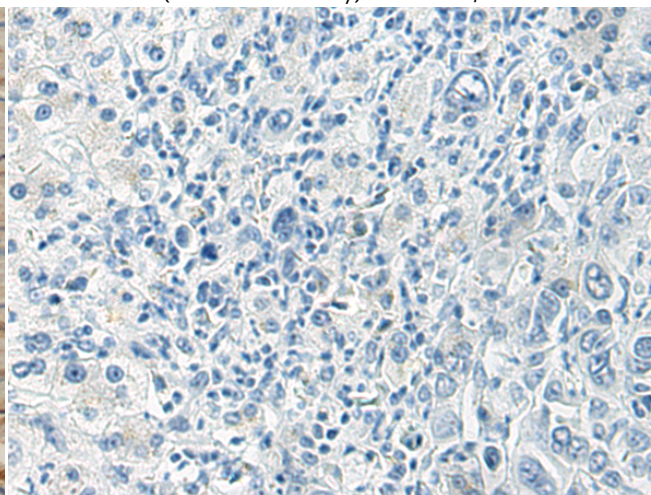
Immunohistochemistry analysis of paraffin embedded Human liver cancer tissue using 217392(EIF4B Antibody) at a dilution of 1/120(Cytoplasm).



In comparison with the IHC on the left, the same paraffin-embedded Human liver cancer tissue is first treated with the fusion protein and then with 217392(Anti-EIF4B Antibody) at dilution 1/120.



The image on the left is immunohistochemistry of paraffin-embedded Human colorectal cancer tissue using 217392(Anti-EIF4B Antibody) at a dilution of 1/120.



In comparison with the IHC on the left, the same paraffin-embedded Human colorectal cancer tissue is first treated with fusion protein and then with D222282(Anti-EIF4B Antibody) at dilution 1/120.



Product Description

Pioneering GTPase and Oncogene Product Development since 2010
