

## EIF4A3 RABBIT MAB

货号: N262168

产品全名: eIF4A3 兔单克隆抗体

基因符号 DDX48; EIF4A3; eIF4AIII; hNMP 265; NMP 265; NMP265; NUK34

**UNIPROT ID:** P38919

**背景:** ATP-dependent RNA helicase. Component of a splicing-dependent multiprotein exon junction complex (EJC) deposited at splice junction on mRNAs. The EJC is a dynamic structure consisting of a few core proteins and several more peripheral nuclear and cytoplasmic associated factors that join the complex only transiently either during EJC assembly or during subsequent mRNA metabolism.

**抗原:** A synthetic peptide of human Eif4a3

**经过测试的应用:** WB,IHC-F,IHC-P,ICC/IF,IP

**推荐稀释比:** WB: 1/500-1/1000 IHC: 1/50-1/100 IF: 1/50-1/200 IP: 1/20

**种属反应性:** Rabbit

**克隆性:** Rabbit Monoclonal

**克隆编号:** R05-1B7

**分子量:** Calculated MW: 47 kDa; Observed MW: 47 kDa

**亚型:** IgG

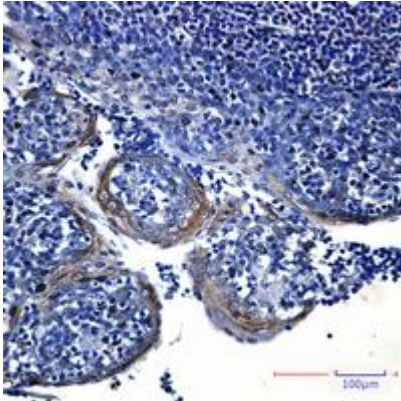
**纯化:** Affinity Purified

**种属反应性:** Human,Rat,Hamster

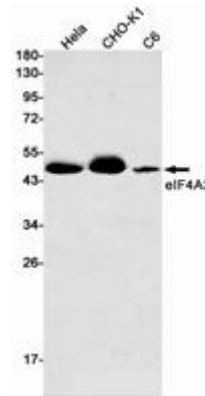
**成分:** PBS (without Mg<sup>2+</sup> and Ca<sup>2+</sup>), pH 7.3 containing 50% glycerol, 0.5% BSA and 0.02% sodium azide

**研究领域:** Epigenetics and Nuclear Signaling

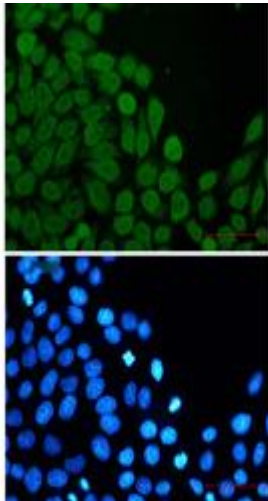
**储存和运输:** Store at -20°C. Avoid repeated freezing and thawing



Immunohistochemistry analysis of paraffin-embedded Human tonsil using Eif4a3 antibody. High-pressure and temperature Sodium Citrate pH 6.0 was used for antigen retrieval.



Western blot analysis of eIF4A3 in HeLa, CHO-K1, C6 lysates using eIF4A3 antibody.



Immunocytochemistry analysis of Eif4a3 (green) in HeLa using Eif4a3 antibody, and DAPI (blue)