

EIF4A2 RABBIT PAB

货号: S219232

产品全名: EIF4A2 兔多抗

基因符号: DDX2B; EIF4A; EIF4F; BM-010; eIF4A-II; eIF-4A-II

UNIPROT ID: Q14240 (Gene Accession - BC016295)

背景: ATP-dependent RNA helicase which is a subunit of the eIF4F complex involved in cap recognition and is required for mRNA binding to ribosome. In the current model of translation initiation, eIF4A unwinds RNA secondary structures in the 5'-UTR of mRNAs which is necessary to allow efficient binding of the small ribosomal subunit, and subsequent scanning for the initiator codon.

抗原: Fusion protein of human EIF4A2

经过测试的应用: ELISA, IHC

推荐稀释比: IHC: 50-200; ELISA: 5000-10000

种属反应性: Rabbit

克隆性: Rabbit Polyclonal

亚型: Immunogen-specific rabbit IgG

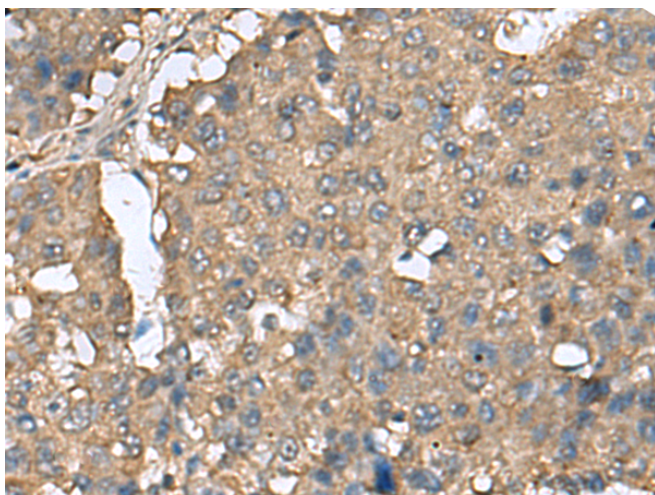
纯化: Antigen affinity purification

种属反应性: Human, Mouse, Rat

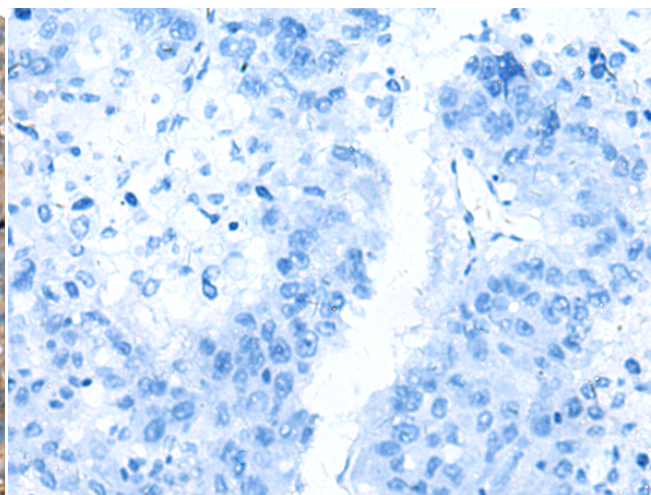
成分: PBS (without Mg²⁺ and Ca²⁺), pH 7.4, 150 mM NaCl, 0.05% Sodium Azide and 40% glycerol

研究领域: Epigenetics and Nuclear Signaling

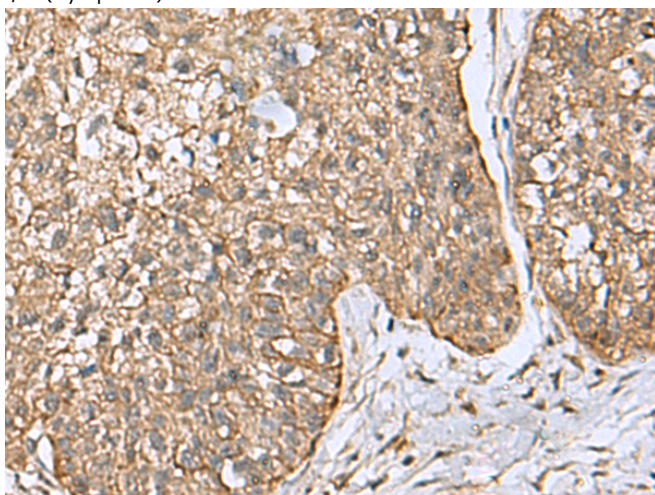
储存和运输: Store at -20°C. Avoid repeated freezing and thawing



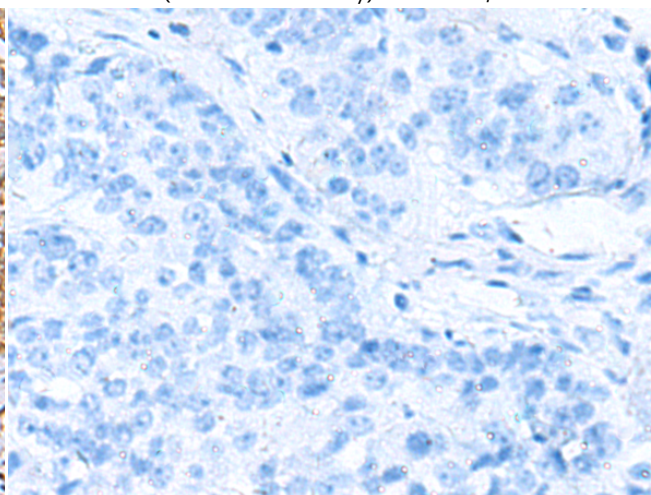
Immunohistochemistry analysis of paraffin embedded Human liver cancer tissue using 219232(EIF4A2 Antibody) at a dilution of 1/65(Cytoplasm).



In comparison with the IHC on the left, the same paraffin-embedded Human liver cancer tissue is first treated with the fusion protein and then with 219232(Anti-EIF4A2 Antibody) at dilution 1/65.



The image on the left is immunohistochemistry of paraffin-embedded Human esophagus cancer tissue using 219232(Anti-EIF4A2 Antibody) at a dilution of 1/65.



In comparison with the IHC on the left, the same paraffin-embedded Human esophagus cancer tissue is first treated with fusion protein and then with D226100(Anti-EIF4A2 Antibody) at dilution 1/65.



Product Description

Pioneering GTPase and Oncogene Product Development since 2010
