

EIF4A1 (6D7) MOUSE MAB

货号: N261248

产品全名: eIF4A1 (6D7) 小鼠单抗

基因符号 Eukaryotic initiation factor 4A-I; eIF-4A-I; eIF4A-I; ATP-dependent RNA helicase eIF4A-1

UNIPROT ID: P60842

背景: ATP-dependent RNA helicase which is a subunit of the eIF4F complex involved in cap recognition and is required for mRNA binding to ribosome.

抗原: Synthetic Peptide of eIF4A1

经过测试的应用: WB,IHC-F,IHC-P,ICC/IF

推荐稀释比: WB: 1/500-1/1000 IHC: 1/50-1/100 IF: 1/50-1/200

种属反应性: Mouse

克隆性: Mouse Monoclonal

克隆编号: 6D7-10D5-7H7

分子量: Calculated MW: 46 kDa; Observed MW: 46 kDa

亚型: IgG1

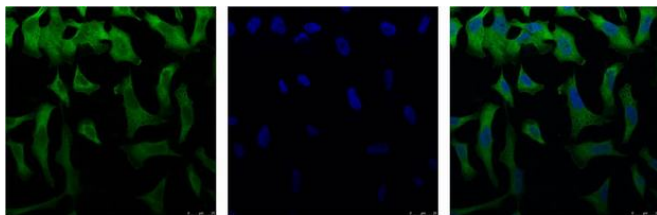
纯化: Affinity Purified

种属反应性: Human, Mouse and Rat

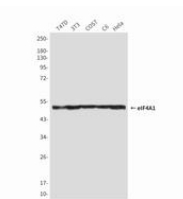
成分: PBS (without Mg²⁺ and Ca²⁺), pH 7.3 containing 50% glycerol, 0.5% BSA and 0.02% sodium azide

研究领域: Epigenetics and Nuclear Signaling

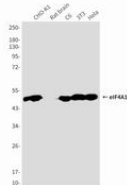
储存和运输: Store at -20°C. Avoid repeated freezing and thawing



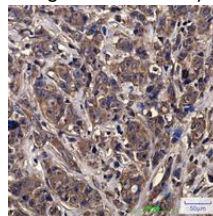
Immunofluorescence analysis of eIF4A1 (6D7) in HeLa using eIF4A1 (6D7) antibody(Left), and DAPI (blue)



Western blot analysis of eIF4A1 in T47D, 3T3, COS7, C6 and HeLa lysates using eIF4A1 antibody.



Western blot analysis of eIF4A1 (6D7) in CHO-K1, rat brain, C6, 3T3, HeLa lysates using eIF4A1 (6D7) antibody.



Immunohistochemistry analysis of paraffin-embedded Human breast cancer tissue using eIF4A1 (6D7) antibody. High-pressure and temperature Sodium Citrate pH 6.0 was used for antigen retrieval.