

EIF3G RABBIT PAB

货号: S219419

产品全名: EIF3G 兔多抗

基因符号 EIF3S4; EIF3-P42; eIF3-p44; eIF3-delta

UNIPROT ID: O75821 (Gene Accession - BC000733)

背景: This gene encodes a core subunit of the eukaryotic translation initiation factor 3 (eIF3) complex, which is required for initiation of protein translation. An N-terminal caspase cleavage product of the encoded protein may stimulate degradation of DNA. A mutation in this gene is associated with narcolepsy. [provided by RefSeq, Jul 2016]

抗原: Fusion protein of human EIF3G

经过测试的应用: ELISA, IHC

推荐稀释比: IHC: 150-300; ELISA: 5000-10000

种属反应性: Rabbit

克隆性: Rabbit Polyclonal

亚型: Immunogen-specific rabbit IgG

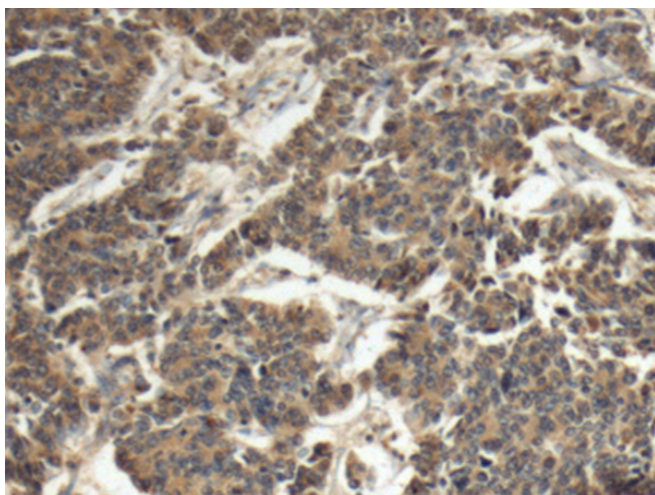
纯化: Antigen affinity purification

种属反应性: Human, Mouse, Rat

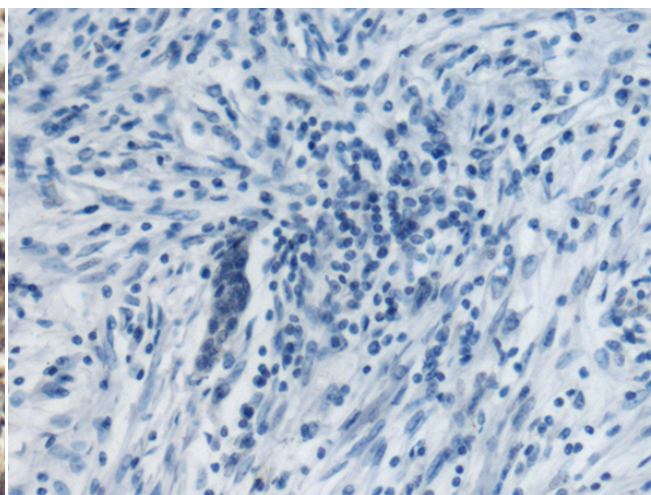
成分: PBS (without Mg²⁺ and Ca²⁺), pH 7.4, 150 mM NaCl, 0.05% Sodium Azide and 40% glycerol

研究领域: Epigenetics and Nuclear Signaling

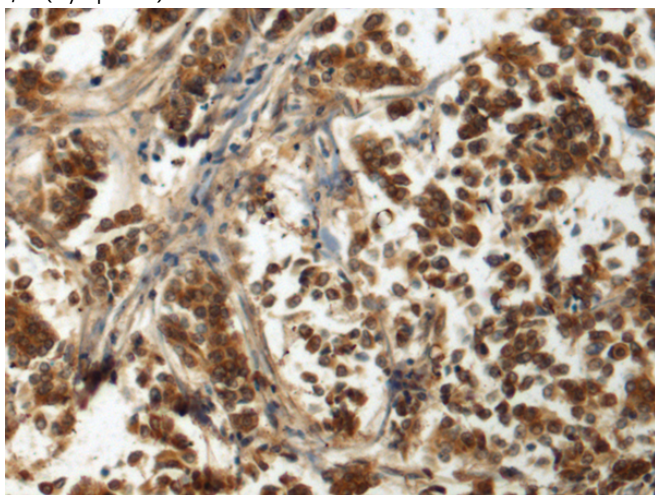
储存和运输: Store at -20°C. Avoid repeated freezing and thawing



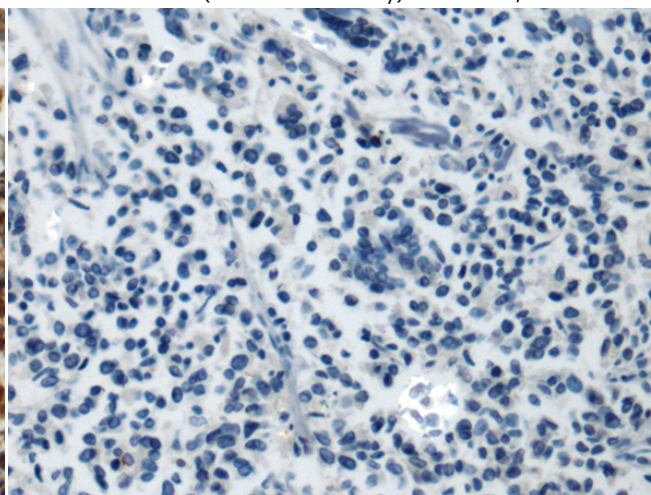
Immunohistochemistry analysis of paraffin embedded Human colorectal cancer tissue using 219419(EIF3G Antibody) at a dilution of 1/110(Cytoplasm).



In comparison with the IHC on the left, the same paraffin-embedded Human colorectal cancer tissue is first treated with the fusion protein and then with 219419(Anti-EIF3G Antibody) at dilution 1/110.



The image on the left is immunohistochemistry of paraffin-embedded Human breast cancer tissue using 219419(Anti-EIF3G Antibody) at a dilution of 1/110.



In comparison with the IHC on the left, the same paraffin-embedded Human breast cancer tissue is first treated with fusion protein and then with D226840(Anti-EIF3G Antibody) at dilution 1/110.



Product Description

Pioneering GTPase and Oncogene Product Development since 2010
