

EIF3B RABBIT PAB

货号: S221938

产品全名: EIF3B 兔多抗

基因符号: PRT1; EIF3S9; EIF3-ETA; EIF3-P110; EIF3-P116

UNIPROT ID: P55884 (Gene Accession - NP_003742)

背景: Eukaryotic initiation factor 3 subunit B (EIF3B) is one of at least 13 non-identical protein subunits of eukaryotic initiation factor 3 (eIF3). eIF3 is the largest eIF (~650 kDa) and functions to facilitate binding of the 40S ribosomal subunit to the 5'-end of cellular mRNAs near the cap structure (m7GpppN). EIF3B is a conserved subunit and part of the functional core of eIF3. It bears a non-canonical RNA recognition motif (RRM) and interacts directly with the eIF3S1 subunit.

抗原: Synthetic peptide of human EIF3B

经过测试的应用: ELISA, IHC

推荐稀释比: IHC: 30-150; ELISA: 5000-10000

种属反应性: Rabbit

克隆性: Rabbit Polyclonal

亚型: Immunogen-specific rabbit IgG

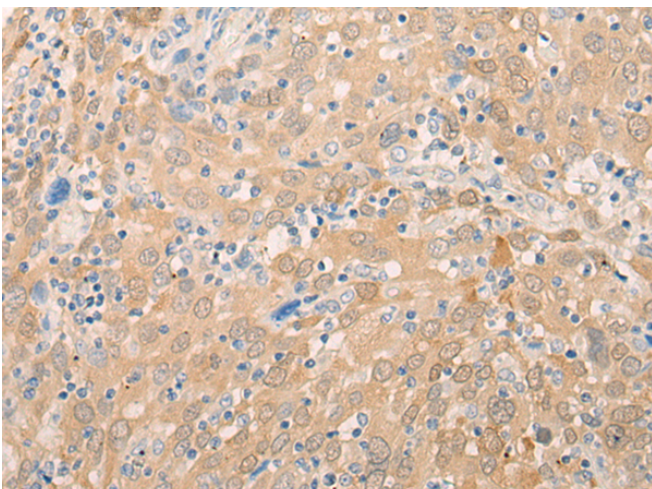
纯化: Antigen affinity purification

种属反应性: Human, Mouse, Rat

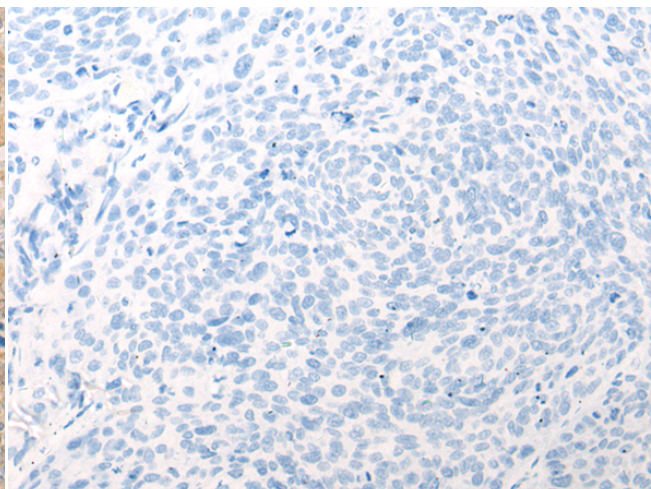
成分: PBS (without Mg²⁺ and Ca²⁺), pH 7.4, 150 mM NaCl, 0.05% Sodium Azide and 40% glycerol

研究领域: Epigenetics and Nuclear Signaling

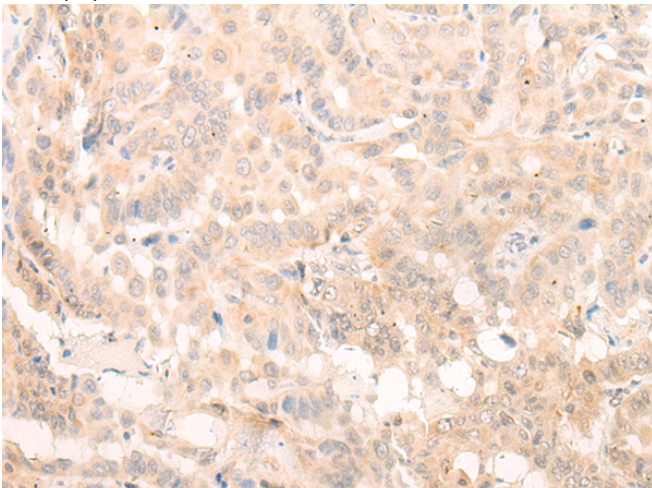
储存和运输: Store at -20°C. Avoid repeated freezing and thawing



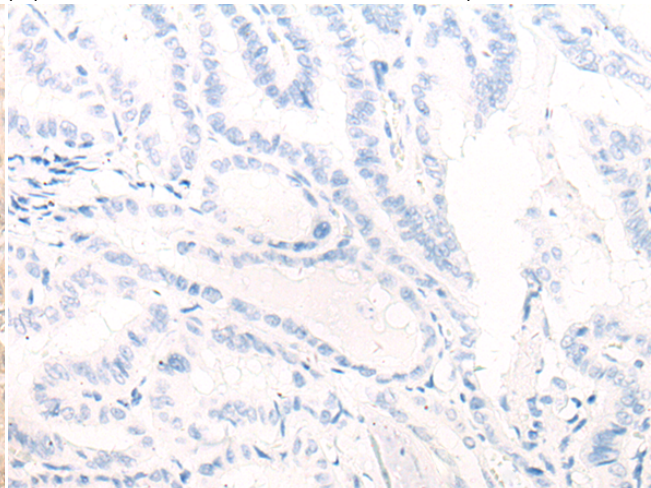
Immunohistochemistry analysis of paraffin embedded Human cervical cancer tissue using 221938(EIF3B Antibody) at a dilution of 1/20(Cytoplasm).



In comparison with the IHC on the left, the same paraffin-embedded Human cervical cancer tissue is first treated with the synthetic peptide and then with 221938(Anti-EIF3B Antibody) at dilution 1/20.



The image on the left is immunohistochemistry of paraffin-embedded Human thyroid cancer tissue using 221938(Anti-EIF3B Antibody) at a dilution of 1/20.



In comparison with the IHC on the left, the same paraffin-embedded Human thyroid cancer tissue is first treated with synthetic peptide and then with D263769(Anti-EIF3B Antibody) at dilution 1/20.



Product Description

Pioneering GTPase and Oncogene Product Development since 2010
