

EIF2B3 RABBIT PAB

货号: S218873

产品全名: EIF2B3 兔多抗

基因符号 EIF-2B; EIF2Bgamma

UNIPROT ID: Q9NR50 (Gene Accession - BC018728)

背景: The protein encoded by this gene is one of the subunits of initiation factor eIF2B, which catalyzes the exchange of eukaryotic initiation factor 2-bound GDP for GTP. It has also been found to function as a cofactor of hepatitis C virus internal ribosome entry site-mediated translation. Mutations in this gene have been associated with leukodystrophy with vanishing white matter. Alternatively spliced transcript variants encoding different isoforms have been found for this gene.

抗原: Fusion protein of human EIF2B3

经过测试的应用: ELISA, IHC

推荐稀释比: IHC: 100-200; ELISA: 5000-10000

种属反应性: Rabbit

克隆性: Rabbit Polyclonal

亚型: Immunogen-specific rabbit IgG

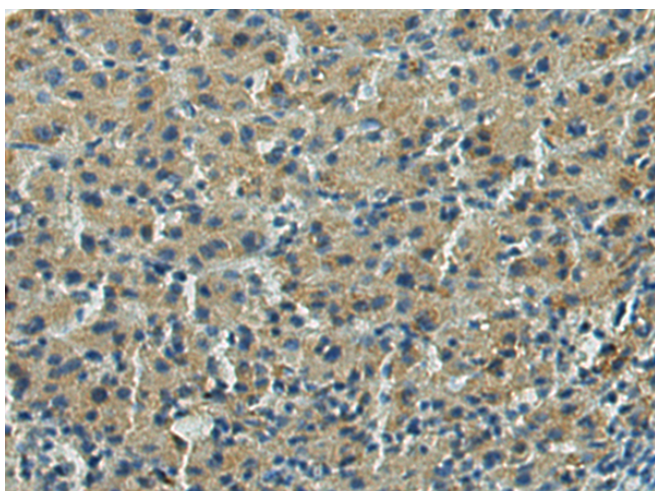
纯化: Antigen affinity purification

种属反应性: Human, Rat

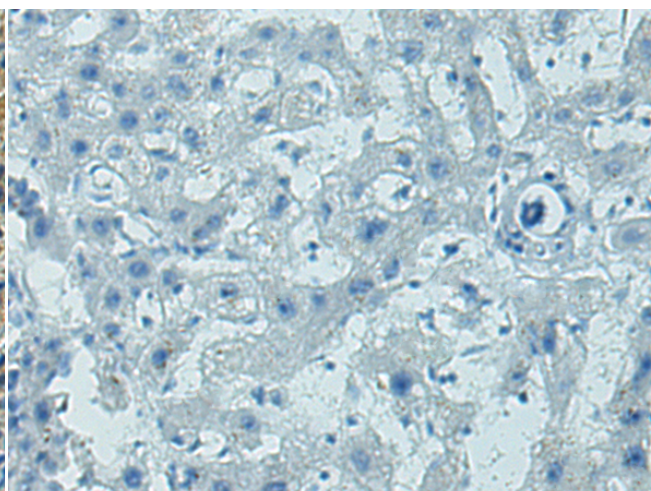
成分: PBS (without Mg²⁺ and Ca²⁺), pH 7.4, 150 mM NaCl, 0.05% Sodium Azide and 40% glycerol

研究领域: Epigenetics and Nuclear Signaling

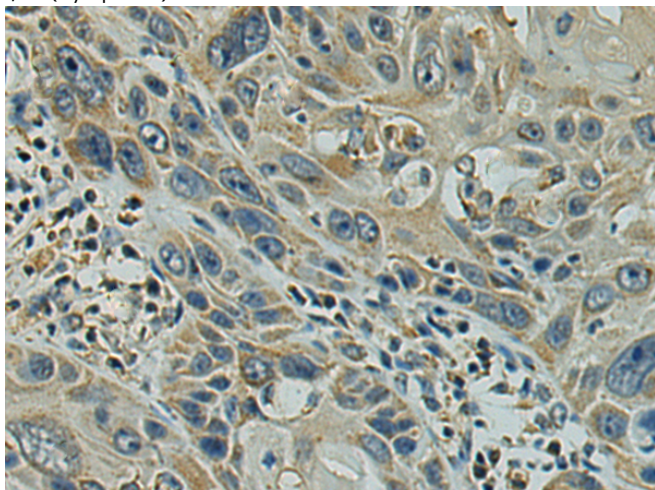
储存和运输: Store at -20°C. Avoid repeated freezing and thawing



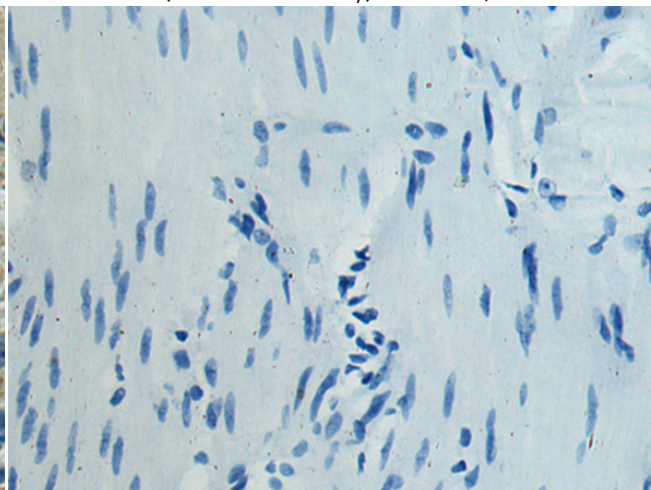
Immunohistochemistry analysis of paraffin embedded Human liver cancer tissue using 218873(EIF2B3 Antibody) at a dilution of 1/120(Cytoplasm).



In comparison with the IHC on the left, the same paraffin-embedded Human liver cancer tissue is first treated with the fusion protein and then with 218873(Anti-EIF2B3 Antibody) at dilution 1/120.



The image on the left is immunohistochemistry of paraffin-embedded Human esophagus cancer tissue using 218873(Anti-EIF2B3 Antibody) at a dilution of 1/120.



In comparison with the IHC on the left, the same paraffin-embedded Human esophagus cancer tissue is first treated with fusion protein and then with D225418(Anti-EIF2B3 Antibody) at dilution 1/120.



Product Description

Pioneering GTPase and Oncogene Product Development since 2010
