

EIF2AK1 RABBIT PAB

货号: S218900

产品全名: EIF2AK1 兔多抗

基因符号 HCR; HRI

UNIPROT ID: Q9BQI3 (Gene Accession - BC006524)

背景: The protein encoded by this gene acts at the level of translation initiation to downregulate protein synthesis in response to stress. The encoded protein is a kinase that can be inactivated by hemin. Two transcript variants encoding different isoforms have been found for this gene.

抗原: Fusion protein of human EIF2AK1

经过测试的应用: ELISA, WB, IHC

推荐稀释比: IHC: 50-300;WB: 500-2000;ELISA: 5000-10000

种属反应性: Rabbit

克隆性: Rabbit Polyclonal

亚型: Immunogen-specific rabbit IgG

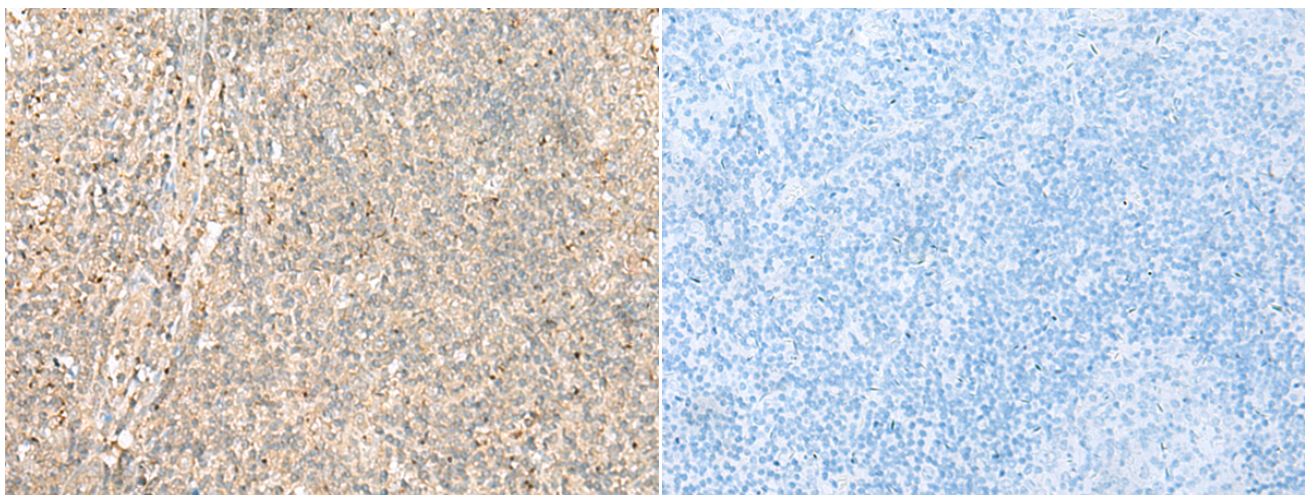
纯化: Antigen affinity purification

种属反应性: Human, Mouse

成分: PBS (without Mg²⁺ and Ca²⁺), pH 7.4, 150 mM NaCl, 0.05% Sodium Azide and 40% glycerol

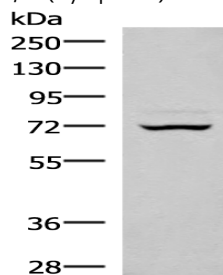
研究领域: Signal Transduction, Epigenetics and Nuclear Signaling

储存和运输: Store at -20°C. Avoid repeated freezing and thawing



Immunohistochemistry analysis of paraffin embedded Human tonsil tissue using 218900(EIF2AK1 Antibody) at a dilution of 1/45(Cytoplasm).

In comparison with the IHC on the left, the same paraffin-embedded Human tonsil tissue is first treated with the fusion protein and then with 218900(Anti-EIF2AK1 Antibody) at dilution 1/45.



Gel: 8%SDS-PAGE, Lysate: 40 µg;

Lane: 293T cell lysate;

Primary antibody: 218900(EIF2AK1 Antibody) at dilution 1/350;

Secondary antibody: Goat anti rabbit IgG at 1/8000 dilution;

Exposure time: 15 seconds