

EIF2A RABBIT PAB

货号: N225359

产品全名: eIF2A 兔多抗

基因符号 EIF2S1; EIF2A; Eukaryotic translation initiation factor 2 subunit 1; Eukaryotic translation initiation factor 2 subunit alpha; eIF-2-alpha; eIF-2A; eIF-2alpha

UNIPROT ID: P05198

背景: eIF2A a translation initiation factor that functions in the early steps of protein synthesis by forming a ternary complex with GTP and initiator tRNA. This complex binds to a 40s ribosomal subunit, followed by mRNA binding to form a 43S preinitiation complex.

抗原: The antiserum was produced against synthesized peptide derived from human eIF2 alpha. AA range:21-70

经过测试的应用: ICC/IF, WB, IHC-F, IHC-P, ELISA

推荐稀释比: WB: 1/500-1/1000 IHC: 1/50-1/100 IF: 1/50-1/200 ELISA: 1/10000

种属反应性: Rabbit

克隆性: Rabbit Polyclonal

分子量: Calculated MW: 36 kDa; Observed MW: 36 kDa

亚型: IgG

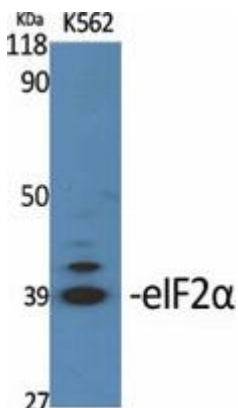
纯化: Affinity Purified

种属反应性: Human, Mouse and Rat, Monkey

成分: PBS (without Mg²⁺ and Ca²⁺), pH 7.3 containing 50% glycerol, 0.5% BSA and 0.02% sodium azide

研究领域: Epigenetics and Nuclear Signaling

储存和运输: Store at -20°C. Avoid repeated freezing and thawing



Western blot analysis of eIF2A in various lysates using eIF2A antibody.



Product Description

Pioneering GTPase and Oncogene Product Development since 2010
