

## EIF2A (2E4F5) MOUSE MAB

货号: N261144

产品全名: eIF2A (2E4F5) 小鼠单抗

基因符号 EIF2S1; EIF2A; Eukaryotic translation initiation factor 2 subunit 1; Eukaryotic translation initiation factor 2 subunit alpha; eIF-2-alpha; eIF-2A; eIF-2alpha

**UNIPROT ID:** P05198

背景: eIF2A a translation initiation factor that functions in the early steps of protein synthesis by forming a ternary complex with GTP and initiator tRNA. This complex binds to a 40s ribosomal subunit, followed by mRNA binding to form a 43S preinitiation complex.

抗原: Purified recombinant human eIF2 $\alpha$  protein fragments expressed in E.coli.

经过测试的应用: WB,ICC/IF,IP

推荐稀释比: WB: 1/500-1/1000 IF: 1/50-1/200 IP: 1/20

种属反应性: Mouse

克隆性: Mouse Monoclonal

克隆编号: 2E4-F5-E7

分子量: Calculated MW: 36 kDa; Observed MW: 36 kDa

亚型: IgG2b

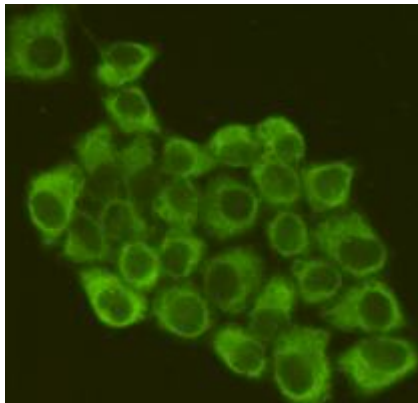
纯化: Affinity Purified

种属反应性: Human, Mouse and Rat

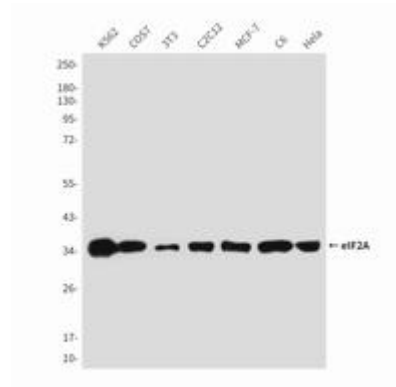
成分: PBS (without Mg<sup>2+</sup> and Ca<sup>2+</sup>), pH 7.3 containing 50% glycerol, 0.5% BSA and 0.02% sodium azide

研究领域: Epigenetics and Nuclear Signaling

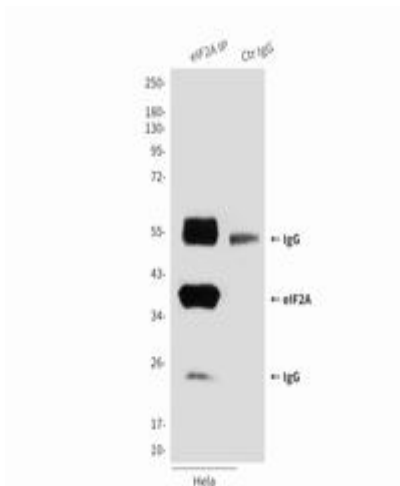
储存和运输: Store at -20°C. Avoid repeated freezing and thawing



Immunofluorescence analysis of eIF2A (2E4F5) in HeLa using eIF2A antibody.



Western blot analysis of eIF2A in K562, COS7, 3T3, C2C12, MCF-7, C6 and HeLa lysates using eIF2A antibody.



Immunoprecipitation analysis of eIF2A (2E4F5) in HeLa lysates using eIF2A antibody.