

EIF1AX RABBIT PAB

货号: S219208

产品全名: EIF1AX 兔多抗

基因符号 EIF1A; EIF4C; eIF-1A; eIF-4C; EIF1AP1

UNIPROT ID: P47813 (Gene Accession - BC000793)

背景: This gene encodes an essential eukaryotic translation initiation factor. The protein is required for the binding of the 43S complex (a 40S subunit, eIF2/GTP/Met-tRNAi and eIF3) to the 5' end of capped RNA.

抗原: Fusion protein of human EIF1AX

经过测试的应用: ELISA, IHC

推荐稀释比: IHC: 50-200; ELISA: 5000-10000

种属反应性: Rabbit

克隆性: Rabbit Polyclonal

亚型: Immunogen-specific rabbit IgG

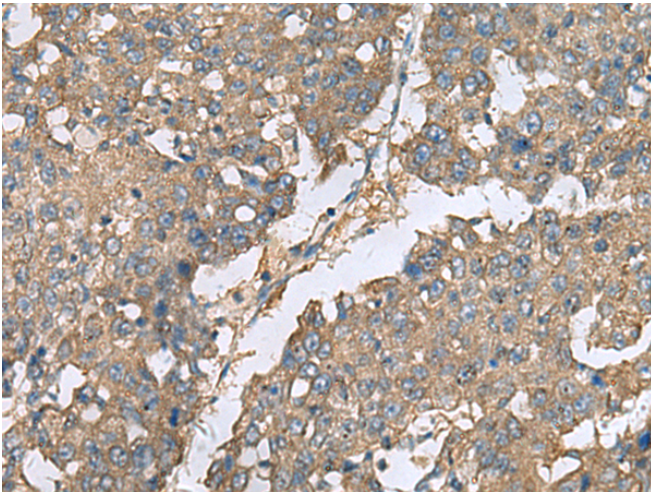
纯化: Antigen affinity purification

种属反应性: Human, Mouse

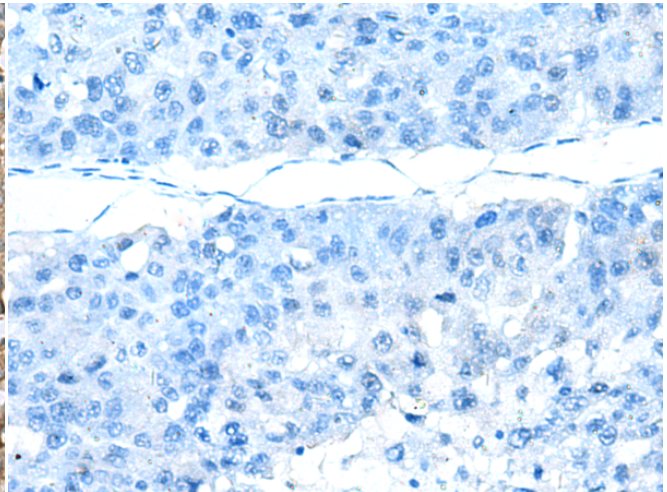
成分: PBS (without Mg²⁺ and Ca²⁺), pH 7.4, 150 mM NaCl, 0.05% Sodium Azide and 40% glycerol

研究领域: Epigenetics and Nuclear Signaling

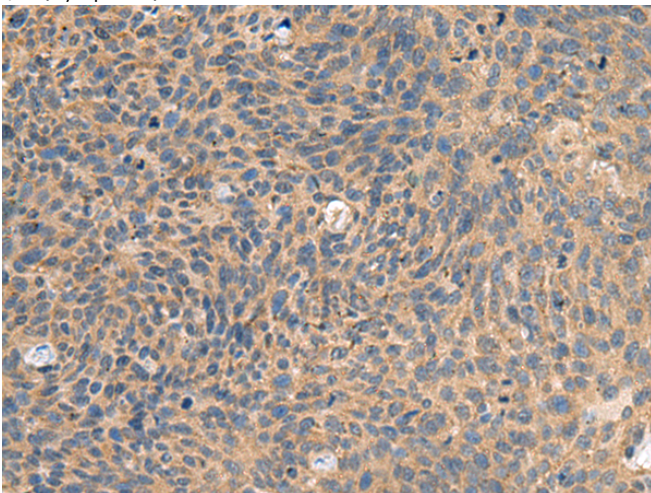
储存和运输: Store at -20°C. Avoid repeated freezing and thawing



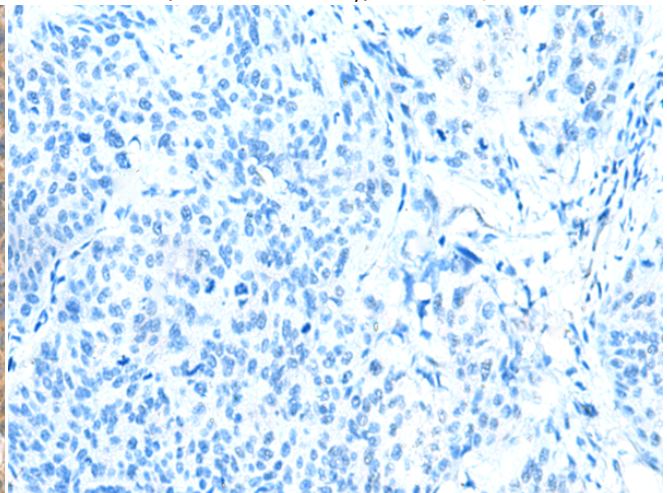
Immunohistochemistry analysis of paraffin embedded Human liver cancer tissue using 219208(EIF1AX Antibody) at a dilution of 1/65(Cytoplasm).



In comparison with the IHC on the left, the same paraffin-embedded Human liver cancer tissue is first treated with the fusion protein and then with 219208(Anti-EIF1AX Antibody) at dilution 1/65.



The image on the left is immunohistochemistry of paraffin-embedded Human cervical cancer tissue using 219208(Anti-EIF1AX Antibody) at a dilution of 1/65.



In comparison with the IHC on the left, the same paraffin-embedded Human cervical cancer tissue is first treated with fusion protein and then with D226054(Anti-EIF1AX Antibody) at dilution 1/65.



Product Description

Pioneering GTPase and Oncogene Product Development since 2010
