

EIF1A RABBIT MAB

货号: N262163

产品全名: eIF1A 兔单克隆抗体

基因符号 EIF1A; EIF4C; eIF-1A; eIF-4C; EIF1A1

UNIPROT ID: P47813

背景: Seems to be required for maximal rate of protein biosynthesis. Enhances ribosome dissociation into subunits and stabilizes the binding of the initiator Met-tRNA(i) to 40 S ribosomal subunits.

抗原: A synthetic peptide of human eIF1A

经过测试的应用: WB,IHC-F,IHC-P,ICC/IF,IP

推荐稀释比: WB: 1/500-1/1000 IHC: 1/50-1/100 IF: 1/50-1/200 IP: 1/20

种属反应性: Rabbit

克隆性: Rabbit Monoclonal

克隆编号: R04-8B7

分子量: Calculated MW: 16 kDa; Observed MW: 16 kDa

亚型: IgG

纯化: Affinity Purified

种属反应性: Human, Mouse and Rat

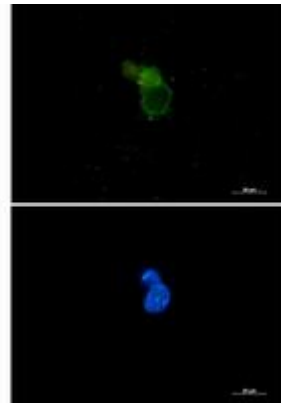
成分: PBS (without Mg²⁺ and Ca²⁺), pH 7.3 containing 50% glycerol, 0.5% BSA and 0.02% sodium azide

研究领域: Epigenetics and Nuclear Signaling

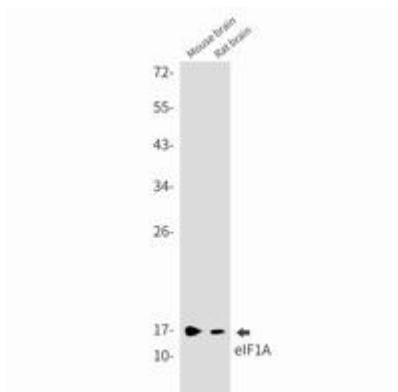
储存和运输: Store at -20°C. Avoid repeated freezing and thawing



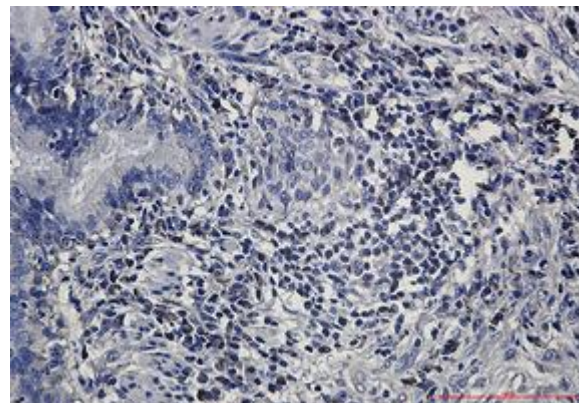
Western blot analysis of eIF1A in LnCap, K562, U251MG, HepG2, MCF-7, HeLa lysates using eIF1A antibody



Immunocytochemistry analysis of eIF1A (green) in 293 using eIF1A antibody, and DAPI (blue).



Western blot analysis of eIF1A in mouse brain, rat brain lysates using eIF1A antibody.



Immunohistochemistry analysis of paraffin-embedded Human lung cancer using eIF1A antibody. High-pressure and temperature Sodium Citrate pH 6.0 was used for antigen retrieval.