

## EHD1 RABBIT MAB

货号: N262161

产品全名: EHD1 兔单克隆抗体

基因符号 EHD1; H PAST; hPAST1; PAST; PAST homolog 1; PAST1; Tilin

**UNIPROT ID:** Q9H4M9

背景: Acts in early endocytic membrane fusion and membrane trafficking of recycling endosomes.

抗原: A synthetic peptide of human EHD1

经过测试的应用: WB,IHC-F,IHC-P,ICC/IF,IP

推荐稀释比: WB: 1/500-1/1000 IHC: 1/50-1/100 IF: 1/50-1/200 IP: 1/20

种属反应性: Rabbit

克隆性: Rabbit Monoclonal

克隆编号: R01-4E6

分子量: Calculated MW: 61 kDa; Observed MW: 61 kDa

亚型: IgG

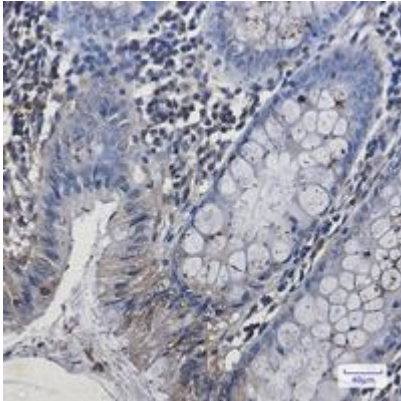
纯化: Affinity Purified

种属反应性: Human, Mouse and Rat

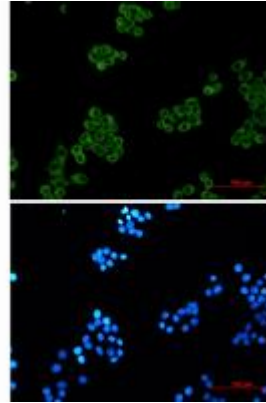
成分: PBS (without Mg<sup>2+</sup> and Ca<sup>2+</sup>), pH 7.3 containing 50% glycerol, 0.5% BSA and 0.02% sodium azide

研究领域: Cardiovascular

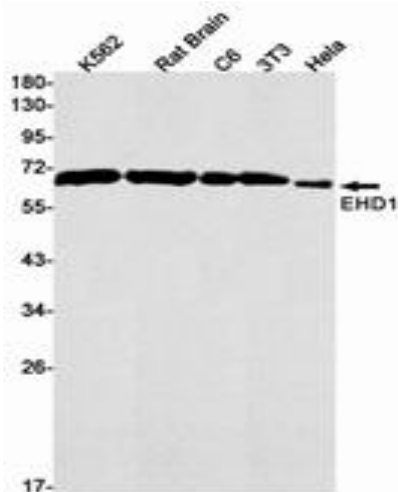
储存和运输: Store at -20°C. Avoid repeated freezing and thawing



Immunohistochemistry analysis of paraffin-embedded Human colon cancer tissue using EHD1 antibody. High-pressure and temperature Sodium Citrate pH 6.0 was used for antigen retrieval.



Immunocytochemistry analysis of EHD1 (green) in HeLa using EHD1 antibody, and DAPI (blue).



Western blot analysis of EHD1 in K562, rat Brain, C6, 3T3, HeLa lysates using EHD1 antibody.