

EGR1 RABBIT PAB

货号: S216488

产品全名: EGR1 兔多抗

基因符号 TIS8; AT225; GOS30; NGFI-A; ZNF225; KROX-24; ZIF-268

UNIPROT ID: P18146 (Gene Accession - BC073983)

背景: The protein encoded by this gene belongs to the EGR family of C2H2-type zinc-finger proteins. It is a nuclear protein and functions as a transcriptional regulator. The products of target genes it activates are required for differentiation and mitogenesis. Studies suggest this is a cancer suppressor gene.

抗原: Fusion protein of human EGR1

经过测试的应用: ELISA, IHC

推荐稀释比: IHC: 100-300; ELISA: 5000-10000

种属反应性: Rabbit

克隆性: Rabbit Polyclonal

亚型: Immunogen-specific rabbit IgG

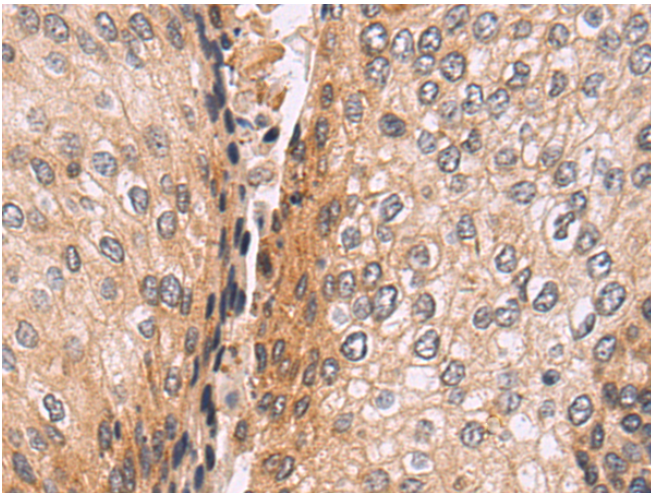
纯化: Antigen affinity purification

种属反应性: Human, Mouse, Rat

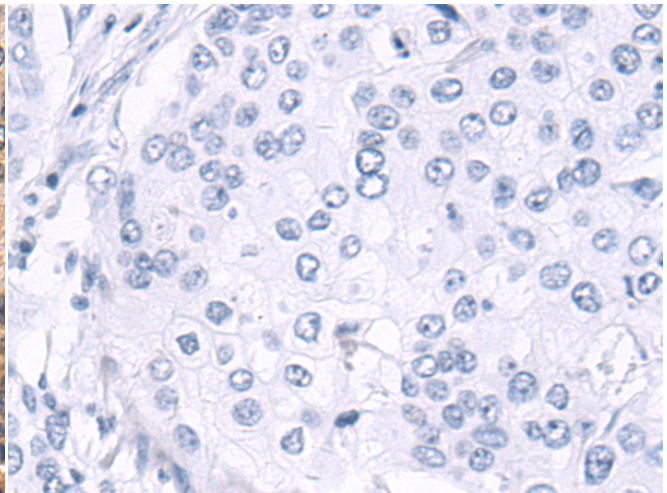
成分: PBS (without Mg²⁺ and Ca²⁺), pH 7.4, 150 mM NaCl, 0.05% Sodium Azide and 40% glycerol

研究领域: Epigenetics and Nuclear Signaling, Cancer

储存和运输: Store at -20°C. Avoid repeated freezing and thawing



Immunohistochemistry analysis of paraffin embedded Human cervical cancer tissue using 216488(EGR1 Antibody) at a dilution of 1/95(Cytoplasm).



In comparison with the IHC on the left, the same paraffin-embedded Human cervical cancer tissue is first treated with the fusion protein and then with 216488(Anti-EGR1 Antibody) at dilution 1/95.