

## EGFR RABBIT MAB

货号: N261661

产品全名: EGFR 兔单克隆抗体

基因符号 EGFR; ERBB; ERBB1; HER1; Epidermal growth factor receptor; Proto-oncogene c-ErbB-1; Receptor tyrosine-protein kinase erbB-1

**UNIPROT ID:** P00533

**背景:** EGFR is a receptor tyrosine kinase. Receptor for epidermal growth factor (EGF) and related growth factors including TGF- $\alpha$ , amphiregulin, betacellulin, heparin-binding EGF-like growth factor, GP30 and vaccinia virus growth factor. Is involved in the control of cell growth and differentiation. . A single-pass transmembrane tyrosine kinase. Ligand binding to this receptor results in receptor dimerization, autophosphorylation (in trans), activation of various downstream signaling molecules and lysosomal degradation.

**抗原:** A synthetic peptide of human EGFR

**经过测试的应用:** WB, ICC/IF, IP

**推荐稀释比:** WB: 1/500-1/1000 IF: 1/50-1/200 IP: 1/20

**种属反应性:** Rabbit

**克隆性:** Rabbit Monoclonal

**克隆编号:** R03-6B1

**分子量:** Calculated MW: 134 kDa; Observed MW: 175 kDa

**亚型:** IgG

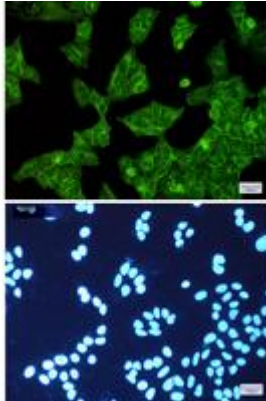
**纯化:** Affinity Purified

**种属反应性:** Human, Mouse

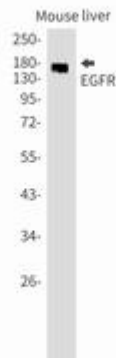
**成分:** PBS (without Mg<sup>2+</sup> and Ca<sup>2+</sup>), pH 7.3 containing 50% glycerol, 0.5% BSA and 0.02% sodium azide

**研究领域:** Signal Transduction

**储存和运输:** Store at -20°C. Avoid repeated freezing and thawing



Immunocytochemistry analysis of EGFR (green) in Hela using EGFR antibody, and DAPI (blue)



Western blot analysis of EGFR in mouse liver lysates using EGFR antibody.



Western blot analysis of EGFR in Hela lysates using EGFR antibody.