

EG5 RABBIT MAB

货号: N263312

产品全名: Eg5 兔单克隆抗体

基因符号 KIF11; EG5; KNSL1; TRIP5; Kinesin-like protein KIF11; Kinesin-like protein 1; Kinesin-like spindle protein HKSP; Kinesin-related motor protein Eg5; Thyroid receptor-interacting protein 5; TR-interacting protein 5; TRIP-5

UNIPROT ID: P52732

背景: Motor protein required for establishing a bipolar spindle. Blocking of KIF11 prevents centrosome migration and arrest cells in mitosis with monoastral microtubule arrays.

抗原: Recombinant protein of human Eg5

经过测试的应用: WB, ICC/IF

推荐稀释比: WB: 1/500-1/1000 IF: 1/50-1/200

种属反应性: Rabbit

克隆性: Rabbit Monoclonal

克隆编号: R02-3H5

分子量: Calculated MW: 119 kDa; Observed MW: 119 kDa

亚型: IgG

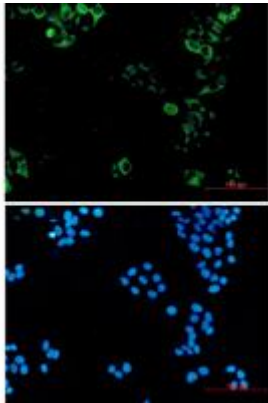
纯化: Affinity Purified

种属反应性: Human, Mouse and Rat

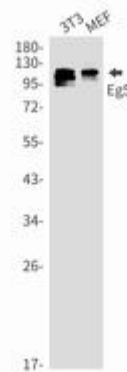
成分: PBS (without Mg²⁺ and Ca²⁺), pH 7.3 containing 50% glycerol, 0.5% BSA and 0.02% sodium azide

研究领域: Signal Transduction

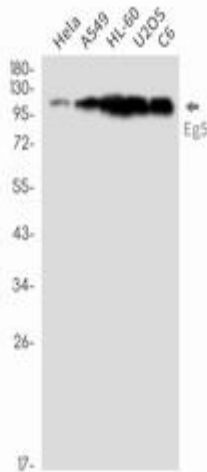
储存和运输: Store at -20°C. Avoid repeated freezing and thawing



Immunocytochemistry analysis of Eg5 (green) in HeLa using Eg5 antibody, and DAPI (blue)



Western blot analysis of Eg5 in 3T3, MEF lysates using Eg5 antibody.



Western blot analysis of Eg5 in HeLa, A549, HL-60, U2OS, C6 lysates using Eg5 antibody.