

EG5 (4H3) MOUSE MAB

货号: N261006

产品全名: Eg5 (4H3) 小鼠单抗

基因符号 KIF11; EG5; KNSL1; TRIP5; Kinesin-like protein KIF11; Kinesin-like protein 1; Kinesin-like spindle protein HKSP; Kinesin-related motor protein Eg5; Thyroid receptor-interacting protein 5; TR-interacting protein 5; TRIP-5

UNIPROT ID: P52732

背景: Motor protein required for establishing a bipolar spindle. Blocking of KIF11 prevents centrosome migration and arrest cells in mitosis with monoastral microtubule arrays.

抗原: Purified recombinant human Eg5 protein fragments expressed in E.coli.

经过测试的应用: WB, ICC/IF, IP

推荐稀释比: WB: 1/500-1/1000 IF: 1/50-1/200 IP: 1/20

种属反应性: Mouse

克隆性: Mouse Monoclonal

克隆编号: 4H3-1F12

分子量: Calculated MW: 119 kDa; Observed MW: 130 kDa

亚型: IgG1

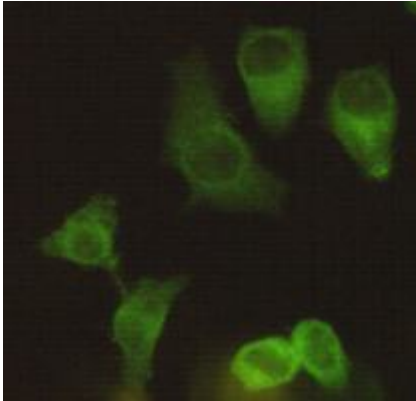
纯化: Affinity Purified

种属反应性: Human

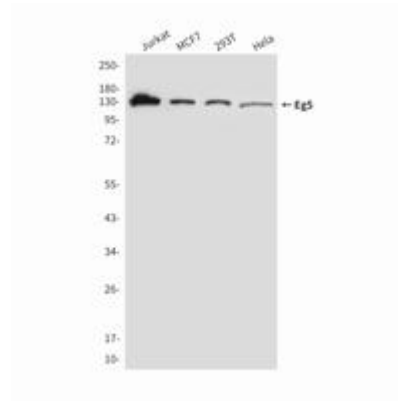
成分: PBS (without Mg²⁺ and Ca²⁺), pH 7.3 containing 50% glycerol, 0.5% BSA and 0.02% sodium azide

研究领域: Signal Transduction

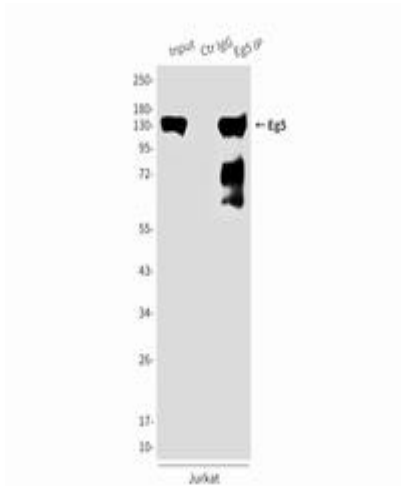
储存和运输: Store at -20°C. Avoid repeated freezing and thawing



Immunocytochemistry analysis of Eg5 (4H3) in Hela using Eg5 antibody.



Western blot analysis of Eg5 in MCF-7, 293T, Jurkat and Hela lysates using Eg5 antibody.



Immunoprecipitation analysis of Eg5 (4H3) in Jurkat lysates using Eg5 antibody.