

EFTUD2 RABBIT PAB

货号: S218935

产品全名: EFTUD2 兔多抗

基因符号 MFD1; MFDGA; Snu114; Snrp116; SNRNP116; U5-116KD

UNIPROT ID: Q15029 (Gene Accession - BC002360)

背景: This gene encodes a GTPase which is a component of the spliceosome complex which processes precursor mRNAs to produce mature mRNAs. Mutations in this gene are associated with mandibulofacial dysostosis with microcephaly. Multiple transcript variants encoding different isoforms have been found for this gene.

抗原: Fusion protein of human EFTUD2

经过测试的应用: ELISA, WB, IHC

推荐稀释比: IHC: 50-300;WB: 500-2000;ELISA: 5000-10000

种属反应性: Rabbit

克隆性: Rabbit Polyclonal

亚型: Immunogen-specific rabbit IgG

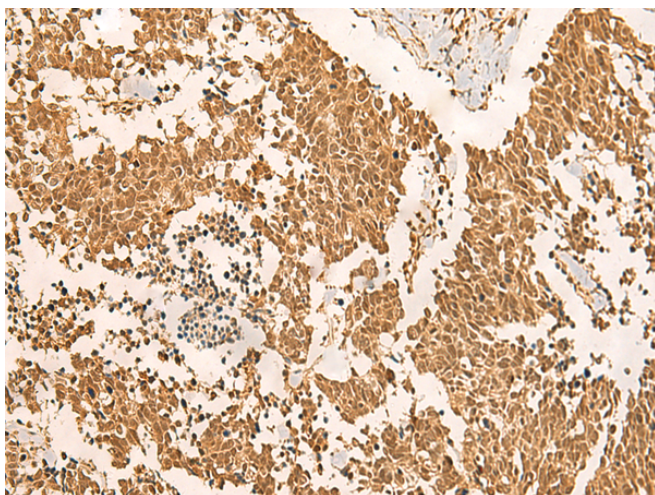
纯化: Antigen affinity purification

种属反应性: Human, Mouse

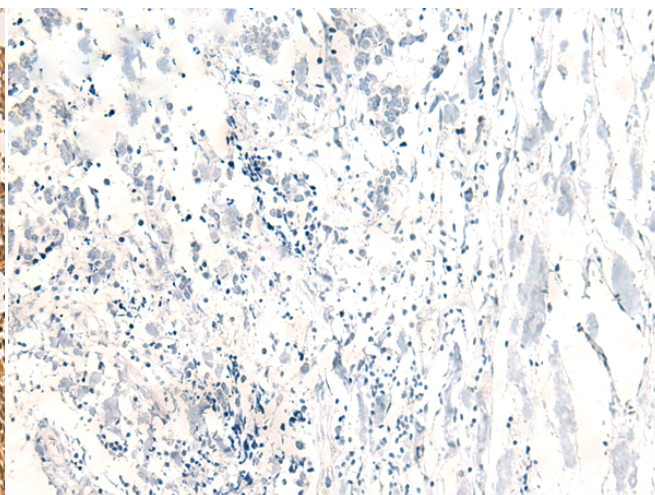
成分: PBS (without Mg²⁺ and Ca²⁺), pH 7.4, 150 mM NaCl, 0.05% Sodium Azide and 40% glycerol

研究领域: Epigenetics and Nuclear Signaling

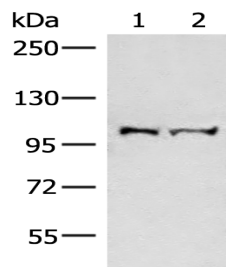
储存和运输: Store at -20°C. Avoid repeated freezing and thawing



Immunohistochemistry analysis of paraffin embedded Human lung cancer tissue using 218935(EFTUD2 Antibody) at a dilution of 1/45(Nucleus).



In comparison with the IHC on the left, the same paraffin-embedded Human lung cancer tissue is first treated with the fusion protein and then with 218935(Anti-EFTUD2 Antibody) at dilution 1/45.



Gel: 6%SDS-PAGE, Lysate: 40 µg;

Lane 1-2: Mouse brain tissue and Jurkat cell lysates;

Primary antibody: 218935(EFTUD2 Antibody) at dilution 1/550;

Secondary antibody: Goat anti rabbit IgG at 1/8000 dilution;

Exposure time: 30 seconds