

EFHD2 RABBIT PAB

货号: S221931

产品全名: EFHD2 兔多抗

基因符号 SWS1

UNIPROT ID: Q96C19 (Gene Accession - NP_077305)

背景: May regulate B-cell receptor (BCR)-induced immature and primary B-cell apoptosis. Plays a role as negative regulator of the canonical NF-kappa-B-activating branch. Controls spontaneous apoptosis through the regulation of BCL2L1 abundance.

抗原: Synthetic peptide of human EFHD2

经过测试的应用: ELISA, WB, IHC

推荐稀释比: IHC: 20-100;WB: 200-1000;ELISA: 5000-10000

种属反应性: Rabbit

克隆性: Rabbit Polyclonal

亚型: Immunogen-specific rabbit IgG

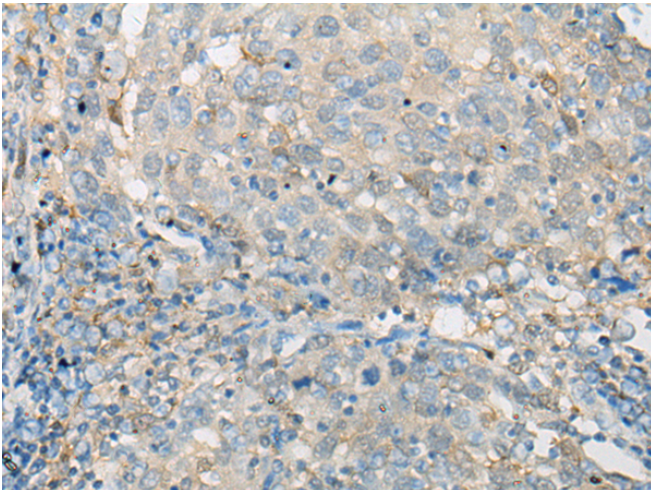
纯化: Antigen affinity purification

种属反应性: Human, Mouse, Rat

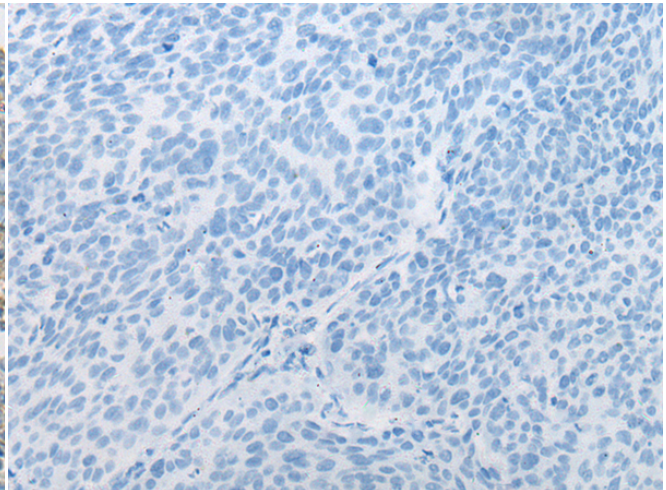
成分: PBS (without Mg²⁺ and Ca²⁺), pH 7.4, 150 mM NaCl, 0.05% Sodium Azide and 40% glycerol

研究领域: Signal Transduction

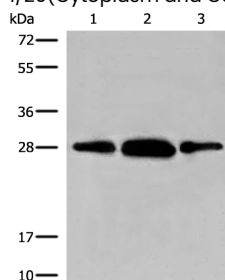
储存和运输: Store at -20°C. Avoid repeated freezing and thawing



Immunohistochemistry analysis of paraffin embedded Human cervical cancer tissue using 221931 (EFHD2 Antibody) at a dilution of 1/20 (Cytoplasm and Cell membrane).



In comparison with the IHC on the left, the same paraffin-embedded Human cervical cancer tissue is first treated with the synthetic peptide and then with 221931 (Anti-EFHD2 Antibody) at dilution 1/20.



Gel: 12%SDS-PAGE, Lysate: 40 µg;

Lane 1-3: Mouse thymus tissue, Mouse brain tissue and Human lung tissue lysates;

Primary antibody: 221931 (EFHD2 Antibody) at dilution 1/250;

Secondary antibody: Goat anti rabbit IgG at 1/8000 dilution;

Exposure time: 10 seconds