

## EFHD1 (5C10) MOUSE MAB

货号: N261231

产品全名: EFHD1 (5C10) 小鼠单抗

基因符号 EF-hand domain-containing protein D1; Mitocalcin; MGC103094; Swiprosin 2

**UNIPROT ID:** Q9BUP0

背景: Acts as a calcium sensor for mitochondrial flash (mitoflash) activation, an event characterized by stochastic bursts of superoxide production (PubMed:26975899). May play a role in neuronal differentiation .

抗原: Synthetic Peptide of EFHD1

经过测试的应用: WB,IHC-P,ICC/IF

推荐稀释比: WB: 1/500-1/1000 IHC: 1/50-1/100 IF: 1/50-1/200

种属反应性: Mouse

克隆性: Mouse Monoclonal

克隆编号: 5C10-4F1-10A5

分子量: Calculated MW: 27 kDa; Observed MW: 27 kDa

亚型: IgG1

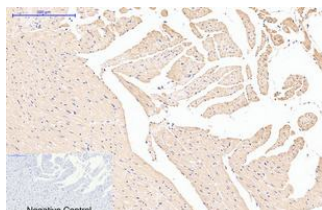
纯化: Affinity Purified

种属反应性: Human, Mouse and Rat

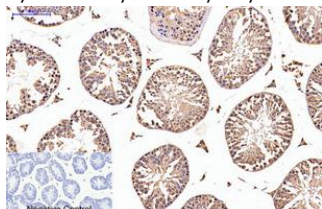
成分: PBS (without Mg<sup>2+</sup> and Ca<sup>2+</sup>), pH 7.3 containing 50% glycerol, 0.5% BSA and 0.02% sodium azide

研究领域: Cell Biology

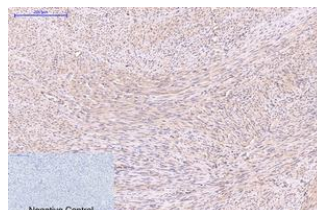
储存和运输: Store at -20°C. Avoid repeated freezing and thawing



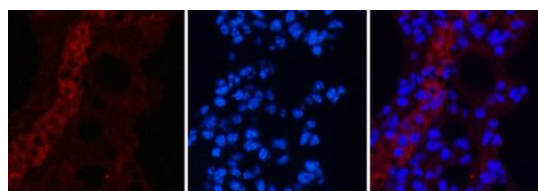
Immunohistochemistry analysis of paraffin-embedded Human tonsils using EFHD1 (5C10) antibody. High-pressure and temperature Sodium Citrate pH 6.0 was used for antigen retrieval. Negative control was used by secondary antibody only.



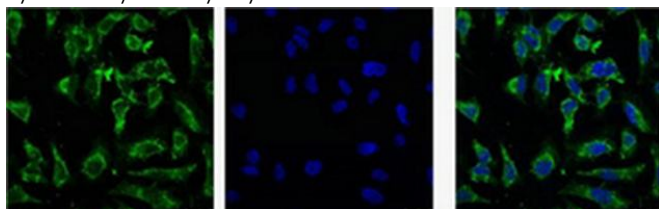
Immunohistochemistry analysis of paraffin-embedded mouse testis tissue using EFHD1 antibody. High-pressure and temperature Sodium Citrate pH 6.0 was used for antigen retrieval. Negative control was used by secondary antibody only.



Immunohistochemistry analysis of paraffin-embedded Human uterus tissue using EFHD1 (5C10) antibody. High-pressure and temperature Sodium Citrate pH 6.0 was used for antigen retrieval. Negative control was used by secondary antibody only.



Immunofluorescence analysis of EFHD1 (5C10) in mouse lung using EFHD1 (5C10) antibody (3G2) (red), and DAPI (blue).



Immunofluorescence analysis of EFHD1 in HeLa using EFHD1 (5C10) antibody (Left) and DAPI (Right).