

## EFHC2 RABBIT PAB

货号: S219408

产品全名: EFHC2 兔多抗

基因符号 MRX74; dJ1158H2.1

**UNIPROT ID:** Q5JST6 (Gene Accession - BC031039 )

**背景:** This gene encodes a protein which contains three DM10 domains and three calcium-binding EF-hand motifs. A related protein is encoded by a gene on chromosome 6. It has been suggested that both proteins are involved in the development of epilepsy (PMID: 15258581, 16112844) and that this gene may be associated with fear recognition in individuals with Turner syndrome. [provided by RefSeq, Aug 2011]

**抗原:** Fusion protein of human EFHC2

**经过测试的应用:** ELISA, IHC

**推荐稀释比:** IHC: 200-300; ELISA: 5000-10000

**种属反应性:** Rabbit

**克隆性:** Rabbit Polyclonal

**亚型:** Immunogen-specific rabbit IgG

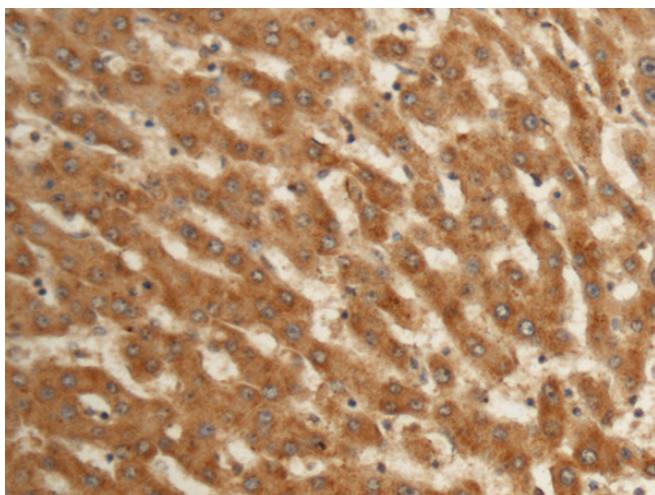
**纯化:** Antigen affinity purification

**种属反应性:** Human

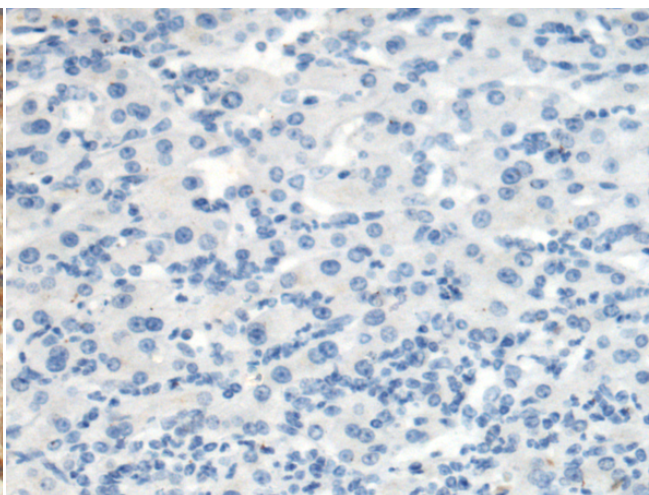
**成分:** PBS (without Mg<sup>2+</sup> and Ca<sup>2+</sup>), pH 7.4, 150 mM NaCl, 0.05% Sodium Azide and 40% glycerol

**研究领域:** Cell Biology

**储存和运输:** Store at -20°C. Avoid repeated freezing and thawing



Immunohistochemistry analysis of paraffin embedded Human liver cancer tissue using 219408(EFHC2 Antibody) at a dilution of 1/150(Cytoplasm).



In comparison with the IHC on the left, the same paraffin-embedded Human liver cancer tissue is first treated with the fusion protein and then with 219408(Anti-EFHC2 Antibody) at dilution 1/150.