

EEPDI RABBIT PAB

货号: S215699

产品全名: EEPDI 兔多抗

基因符号: HSPC107

UNIPROT ID: Q7L9B9 (Gene Accession - NP_085139)

背景: EEPDI(endonuclease/exonuclease/phosphatase family domain containing 1), also known as HSPC107, is a 569 amino acid protein that contains one HhH domain. A significant decrease in the relative transcriptional level of EEPDI is induced by long-term heat stress exposure. Conversely, EEPDI is up-regulated in bovine adipogenic processes related to intramuscular pre-adipocyte differentiation. Encoded by a gene that maps to human chromosome 7p14.2, EEPDI plays a role in DNA binding and repair. Chromosome 7 makes up about 5% of the human genome and contains 158 million bases encoding more than 1,000 genes. Osteogenesis imperfecta, Pendred syndrome, Lissencephaly, Citrullinemia and Shwachman-Diamond syndrome are associated with Chromosome 7.

抗原: Synthetic peptide of human EEPDI

经过测试的应用: ELISA, WB, IHC

推荐稀释比: IHC: 20-100;WB: 200-1000;ELISA: 5000-10000

种属反应性: Rabbit

克隆性: Rabbit Polyclonal

亚型: Immunogen-specific rabbit IgG

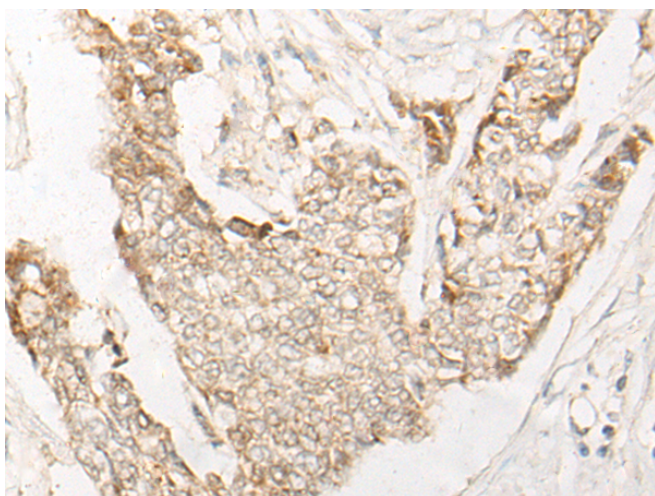
纯化: Antigen affinity purification

种属反应性: Human, Mouse

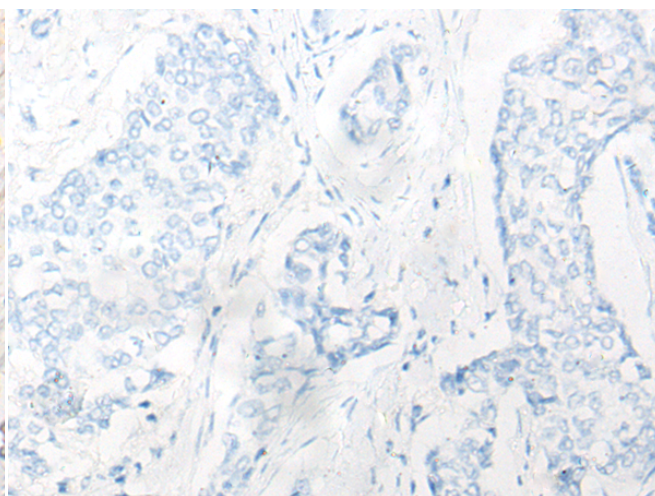
成分: PBS (without Mg²⁺ and Ca²⁺), pH 7.4, 150 mM NaCl, 0.05% Sodium Azide and 40% glycerol

研究领域: Epigenetics and Nuclear Signaling

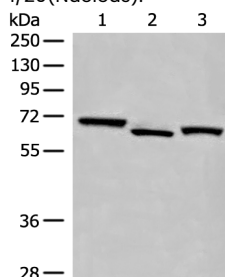
储存和运输: Store at -20°C. Avoid repeated freezing and thawing



Immunohistochemistry analysis of paraffin embedded Human breast cancer tissue using 215699(EEPDI Antibody) at a dilution of 1/20(Nucleus).



In comparison with the IHC on the left, the same paraffin-embedded Human breast cancer tissue is first treated with the synthetic peptide and then with 215699(Anti-EEPDI Antibody) at dilution 1/20.



Gel: 8%SDS-PAGE, Lysate: 40 µg;

Lane 1-3: PC-3 cell, Human cerebrum tissue, 231 cell lysates;

Primary antibody: 215699(EEPDI Antibody) at dilution 1/300;

Secondary antibody: Goat anti rabbit IgG at 1/8000 dilution;

Exposure time: 30 seconds