

EEF1D RABBIT PAB

货号: S219166

产品全名: EEF1D 兔多抗

基因符号: EEF1D; EF-1D; FP1047

UNIPROT ID: P29692 (Gene Accession - BC007847)

背景: This gene encodes a subunit of the elongation factor-1 complex, which is responsible for the enzymatic delivery of aminoacyl tRNAs to the ribosome. This subunit, delta, functions as guanine nucleotide exchange factor. It is reported that following HIV-1 infection, this subunit interacts with HIV-1 Tat. This interaction results in repression of translation of host cell proteins and enhanced translation of viral proteins. Several alternatively spliced transcript variants encoding multiple isoforms have been found for this gene. Related pseudogenes have been defined on chromosomes 1, 6, 7, 9, 11, 13, 17, 19.

抗原: Fusion protein of human EEF1D

经过测试的应用: ELISA, WB, IHC

推荐稀释比: IHC: 50-300; WB: 1000-5000; ELISA: 5000-10000

种属反应性: Rabbit

克隆性: Rabbit Polyclonal

亚型: Immunogen-specific rabbit IgG

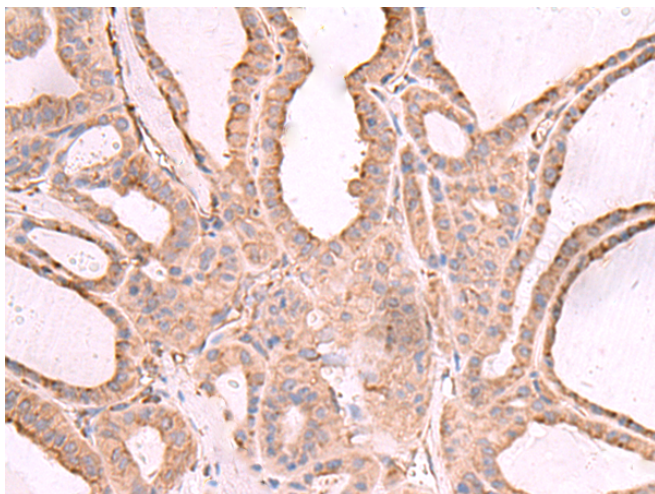
纯化: Antigen affinity purification

种属反应性: Human, Mouse, Rat

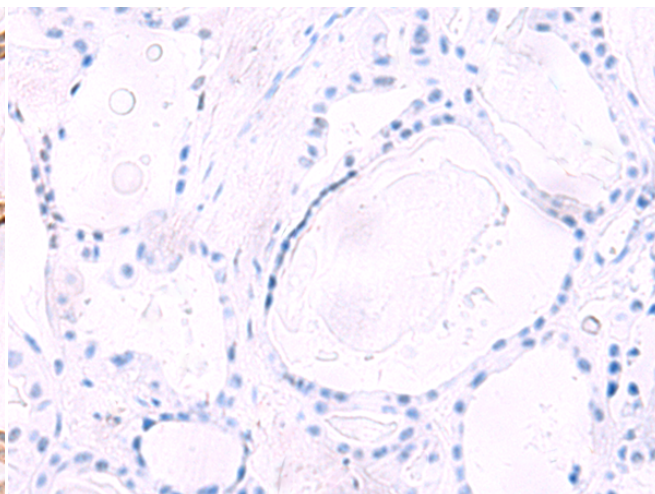
成分: PBS (without Mg²⁺ and Ca²⁺), pH 7.4, 150 mM NaCl, 0.05% Sodium Azide and 40% glycerol

研究领域: Signal Transduction, Epigenetics and Nuclear Signaling

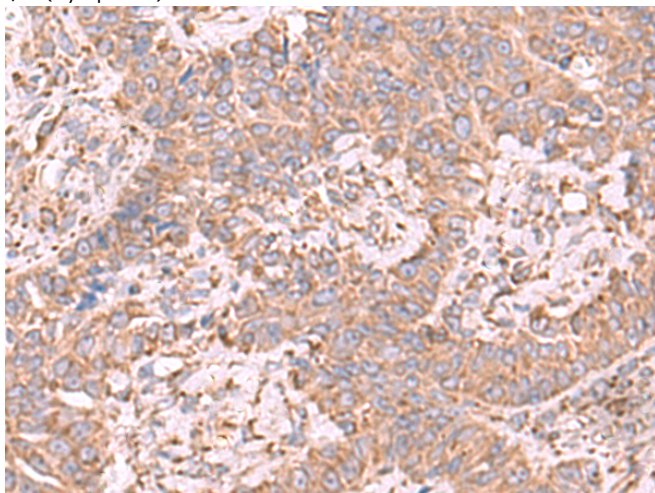
储存和运输: Store at -20°C. Avoid repeated freezing and thawing



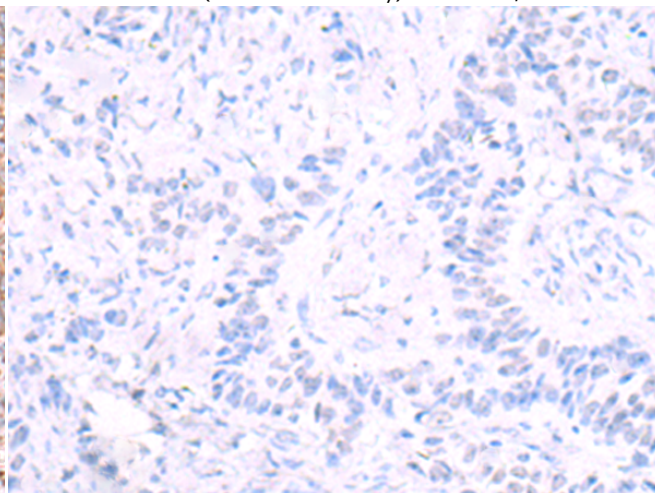
Immunohistochemistry analysis of paraffin embedded Human thyroid cancer tissue using 219166 (EEFID Antibody) at a dilution of 1/65 (Cytoplasm).



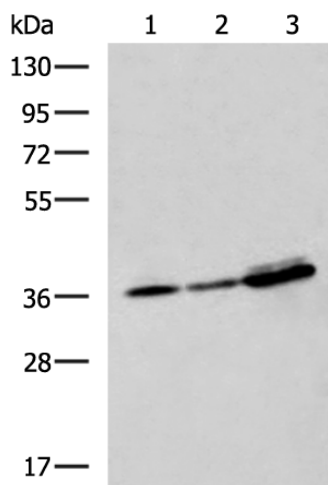
In comparison with the IHC on the left, the same paraffin-embedded Human thyroid cancer tissue is first treated with the fusion protein and then with 219166 (Anti-EEFID Antibody) at dilution 1/65.



The image on the left is immunohistochemistry of paraffin-embedded Human ovarian cancer tissue using 219166 (Anti-EEFID Antibody) at a dilution of 1/65.



In comparison with the IHC on the left, the same paraffin-embedded Human ovarian cancer tissue is first treated with fusion protein and then with D225955 (Anti-EEFID Antibody) at dilution 1/65.



Gel: 8%SDS-PAGE, Lysate: 40 µg;
 Lane 1-3: A549, A172 and HepG2 cell lysates;
 Primary antibody: 219166 (EEFID Antibody) at dilution 1/950;
 Secondary antibody: HRP-conjugated Goat anti rabbit IgG at 1/5000 dilution;
 Exposure time: 3 seconds



Product Description

Pioneering GTPase and Oncogene Product Development since 2010
