

## EEF1AKMT4 RABBIT PAB

货号: S217380

产品全名: EEF1AKMT4 兔多抗

基因符号

**UNIPROT ID:** P0DPD7 (Gene Accession - BC005835)

**背景:** This gene encodes a member of the lysine-specific methyltransferase (KMT) family. The encoded enzyme catalyzes the methylation of lysine-36 of the eukaryotic translation elongation factor 1 alpha. Methylation by this enzyme may affect endoplasmic reticulum-related processes.

**抗原:** Fusion protein of human EEF1AKMT4

**经过测试的应用:** ELISA, WB, IHC

**推荐稀释比:** IHC: 30-150;WB: 500-2000;ELISA: 2000-5000

**种属反应性:** Rabbit

**克隆性:** Rabbit Polyclonal

**亚型:** Immunogen-specific rabbit IgG

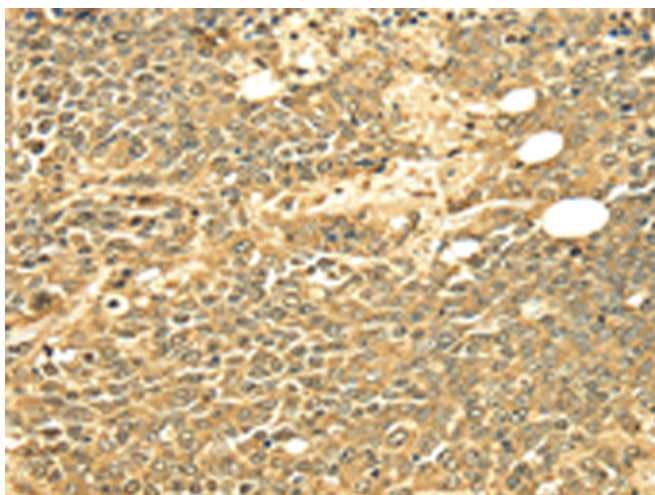
**纯化:** Antigen affinity purification

**种属反应性:** Human, Mouse

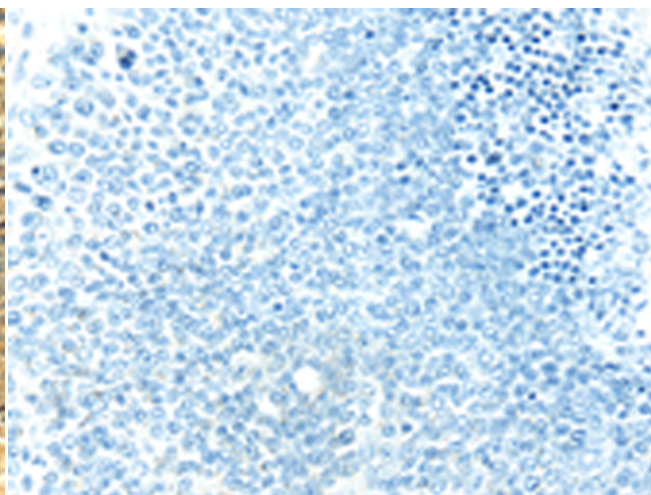
**成分:** PBS (without Mg<sup>2+</sup> and Ca<sup>2+</sup>), pH 7.4, 150 mM NaCl, 0.05% Sodium Azide and 40% glycerol

**研究领域:** Signal Transduction, Neuroscience, Cardiovascular

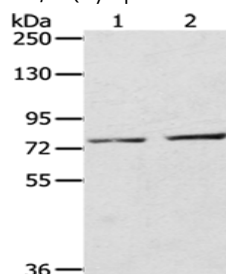
**储存和运输:** Store at -20°C. Avoid repeated freezing and thawing



Immunohistochemistry analysis of paraffin embedded Human ovarian cancer tissue using 217380 (EEF1AKMT4 Antibody) at a dilution of 1/25 (Cytoplasm and Nucleus).



In comparison with the IHC on the left, the same paraffin-embedded Human ovarian cancer tissue is first treated with the fusion protein and then with 217380 (Anti-EEF1AKMT4 Antibody) at dilution 1/25.



Gel: 6%SDS-PAGE, Lysate: 40 µg;

Lane 1-2: A172 cells, Mouse liver tissue;

Primary antibody: 217380 (EEF1AKMT4 Antibody) at dilution 1/350;

Secondary antibody: Goat anti rabbit IgG at 1/8000 dilution;

Exposure time: 20 seconds