

EEF1AKMT2 RABBIT PAB

货号: S219001

产品全名: EEF1AKMT2 兔多抗

基因符号 Efm4; METTL10; C10orf138

UNIPROT ID: Q5JPI9 (Gene Accession - BC026167)

背景: Protein-lysine methyltransferase that selectively catalyzes the trimethylation of EEF1A at 'Lys-318'.

抗原: Fusion protein of human EEF1AKMT2

经过测试的应用: ELISA, IHC

推荐稀释比: IHC: 50-300; ELISA: 5000-10000

种属反应性: Rabbit

克隆性: Rabbit Polyclonal

亚型: Immunogen-specific rabbit IgG

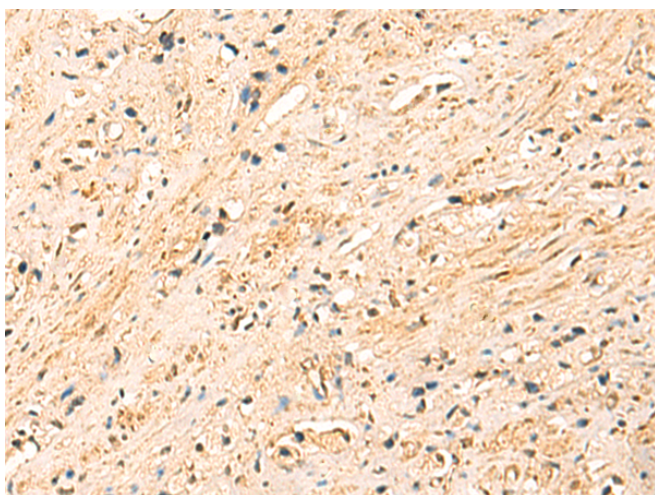
纯化: Antigen affinity purification

种属反应性: Human, Mouse

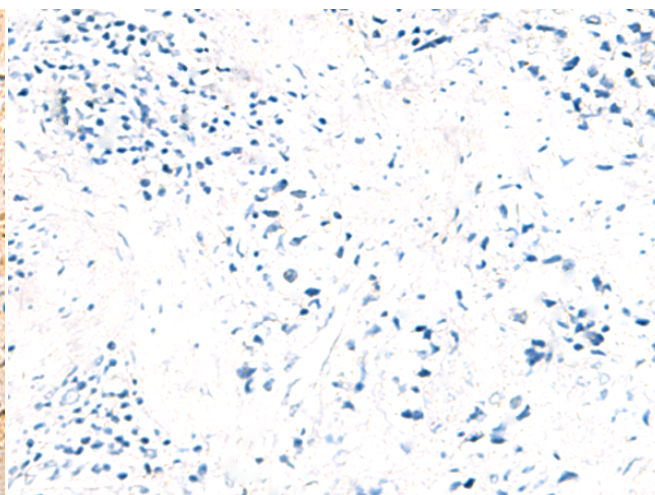
成分: PBS (without Mg²⁺ and Ca²⁺), pH 7.4, 150 mM NaCl, 0.05% Sodium Azide and 40% glycerol

研究领域: Cell Biology

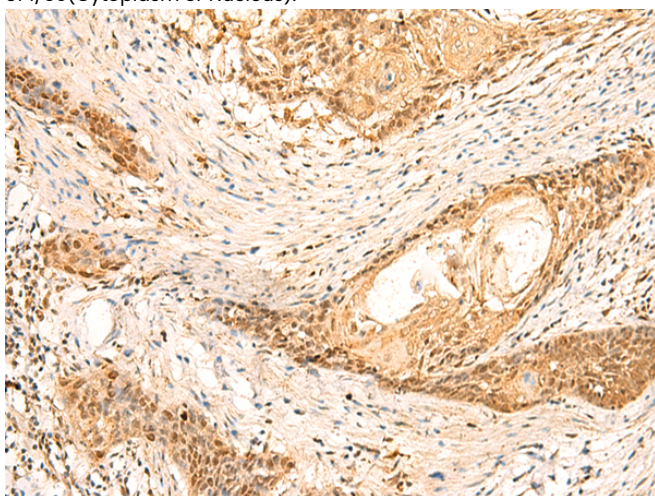
储存和运输: Store at -20°C. Avoid repeated freezing and thawing



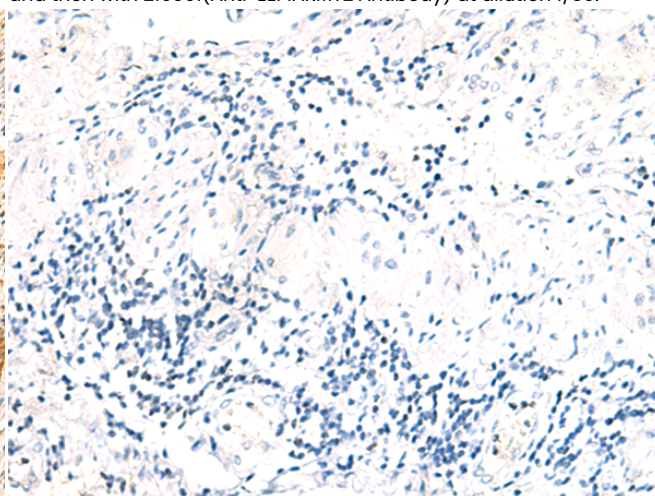
Immunohistochemistry analysis of paraffin embedded Human prostate cancer tissue using 219001(EEF1AKMT2 Antibody) at a dilution of 1/50(Cytoplasm or Nucleus).



In comparison with the IHC on the left, the same paraffin-embedded Human prostate cancer tissue is first treated with the fusion protein and then with 219001(Anti-EEF1AKMT2 Antibody) at dilution 1/50.



The image on the left is immunohistochemistry of paraffin-embedded Human esophagus cancer tissue using 219001(Anti-EEF1AKMT2 Antibody) at a dilution of 1/50.



In comparison with the IHC on the left, the same paraffin-embedded Human esophagus cancer tissue is first treated with fusion protein and then with D225632(Anti-EEF1AKMT2 Antibody) at dilution 1/50.



Product Description

Pioneering GTPase and Oncogene Product Development since 2010
