

EDEM3 RABBIT PAB

货号: S222169

产品全名: EDEM3 兔多抗

基因符号: Clorf22

UNIPROT ID: Q9BZQ6 (Gene Accession - NP_079467)

背景: Quality control in the endoplasmic reticulum (ER) ensures that only properly folded proteins are retained in the cell through recognition and degradation of misfolded or unassembled proteins. EDEM3 belongs to a group of proteins that accelerate degradation of misfolded glycoproteins in the ER (Hirao et al., 2006 [PubMed 16431915]).

抗原: Synthetic peptide of human EDEM3

经过测试的应用: ELISA, IHC

推荐稀释比: IHC: 25-100; ELISA: 500-1000

种属反应性: Rabbit

克隆性: Rabbit Polyclonal

亚型: Immunogen-specific rabbit IgG

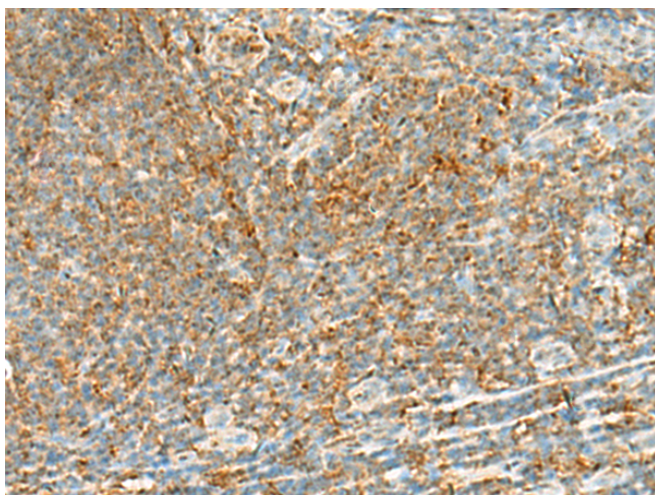
纯化: Antigen affinity purification

种属反应性: Human, Mouse

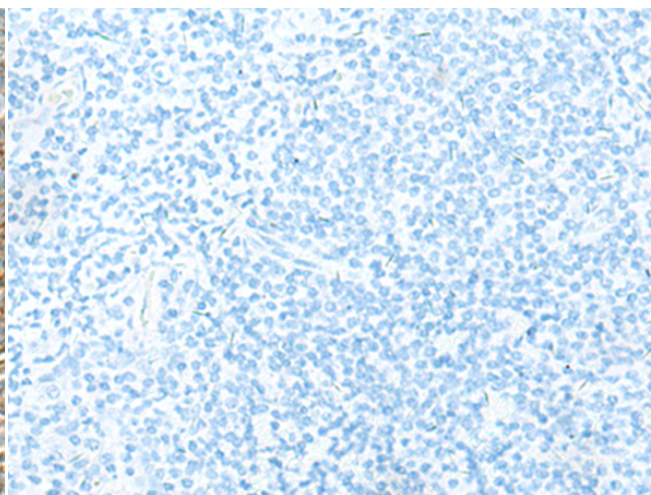
成分: PBS (without Mg²⁺ and Ca²⁺), pH 7.4, 150 mM NaCl, 0.05% Sodium Azide and 40% glycerol

研究领域: Signal Transduction

储存和运输: Store at -20°C. Avoid repeated freezing and thawing



Immunohistochemistry analysis of paraffin embedded Human tonsil tissue using 222169 (EDEM3 Antibody) at a dilution of 1/35 (Cytoplasm).



In comparison with the IHC on the left, the same paraffin-embedded Human tonsil tissue is first treated with the synthetic peptide and then with 222169 (Anti-EDEM3 Antibody) at dilution 1/35.