

EBF3 RABBIT PAB

货号: S219458

产品全名: EBF3 兔多抗

基因符号: COE3; OE-2; EBF-3; HADDS; O/E-2

UNIPROT ID: Q9H4W6 (Gene Accession - BC126130)

背景: This gene encodes a member of the early B-cell factor (EBF) family of DNA binding transcription factors. EBF proteins are involved in B-cell differentiation, bone development and neurogenesis, and may also function as tumor suppressors. The encoded protein inhibits cell survival through the regulation of genes involved in cell cycle arrest and apoptosis, and aberrant methylation or deletion of this gene may play a role in multiple malignancies including glioblastoma multiforme and gastric carcinoma.

抗原: Fusion protein of human EBF3

经过测试的应用: ELISA, IHC

推荐稀释比: IHC: 100-300; ELISA: 5000-10000

种属反应性: Rabbit

克隆性: Rabbit Polyclonal

亚型: Immunogen-specific rabbit IgG

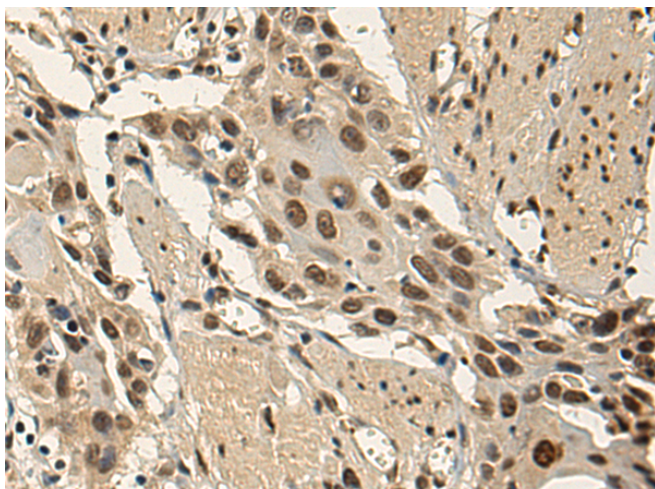
纯化: Antigen affinity purification

种属反应性: Human, Mouse

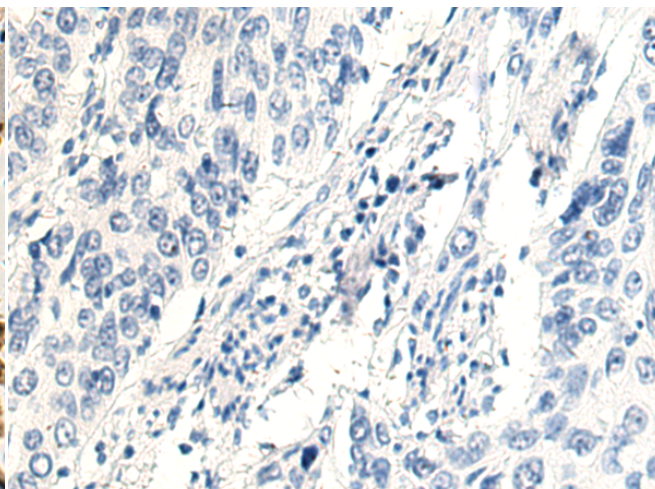
成分: PBS (without Mg²⁺ and Ca²⁺), pH 7.4, 150 mM NaCl, 0.05% Sodium Azide and 40% glycerol

研究领域: Epigenetics and Nuclear Signaling, Neuroscience

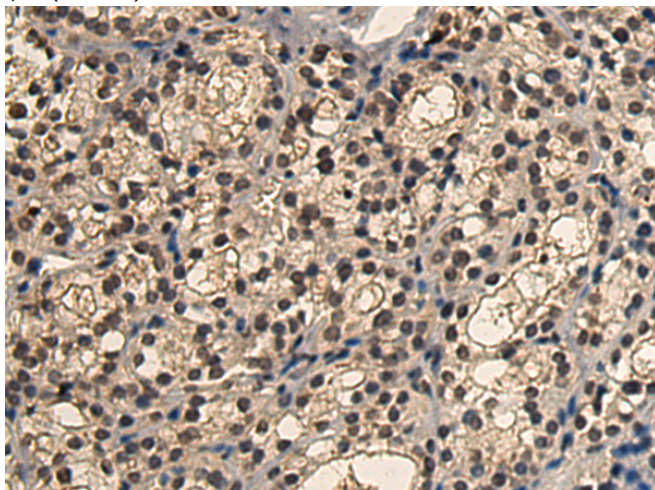
储存和运输: Store at -20°C. Avoid repeated freezing and thawing



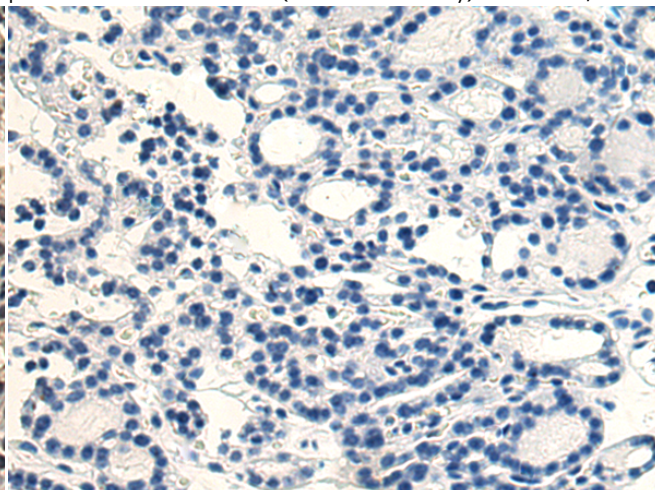
Immunohistochemistry analysis of paraffin embedded Human esophagus cancer tissue using 219458 (EBF3 Antibody) at a dilution of 1/140 (Nucleus).



In comparison with the IHC on the left, the same paraffin-embedded Human esophagus cancer tissue is first treated with the fusion protein and then with 219458 (Anti-EBF3 Antibody) at dilution 1/140.



The image on the left is immunohistochemistry of paraffin-embedded Human thyroid cancer tissue using 219458 (Anti-EBF3 Antibody) at a dilution of 1/140.



In comparison with the IHC on the left, the same paraffin-embedded Human thyroid cancer tissue is first treated with fusion protein and then with D227142 (Anti-EBF3 Antibody) at dilution 1/140.



Product Description

Pioneering GTPase and Oncogene Product Development since 2010
