

E2F1 RABBIT PAB

货号: N225758

产品全名: E2F1 兔多抗

基因符号 E2F1; RBBP3; Transcription factor E2F1; E2F-1; PBR3;
Retinoblastoma-associated protein 1; RBAP-1; Retinoblastoma-binding
protein 3; RBBP-3; pRB-binding protein E2F-1

UNIPROT ID: Q01094

背景: The protein encoded by this gene is a member of the E2F family of transcription factors. The E2F family plays a crucial role in the control of cell cycle and action of tumor suppressor proteins and is also a target of the transforming proteins of small DNA tumor viruses.

抗原: A synthesized peptide derived from human E2F1

经过测试的应用: WB,IHC-P,ICC/IF,IP,FC

推荐稀释比: WB: 1/500-1/1000 IHC: 1/50-1/100 IF: 1/50-1/200 IP: 1/20 FC:
1/50-1/100

种属反应性: Rabbit

克隆性: Rabbit Polyclonal

分子量: Calculated MW: 47 kDa; Observed MW: 65 kDa

亚型: IgG

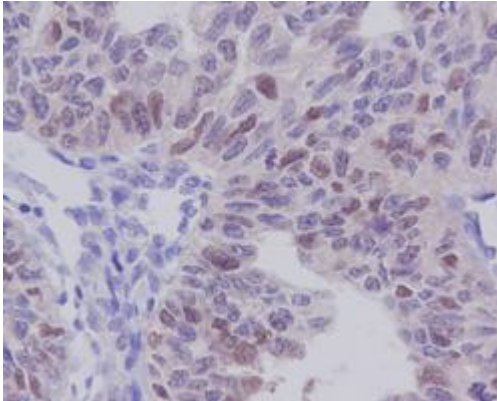
纯化: Affinity Chromatography

种属反应性: Human, Mouse and Rat

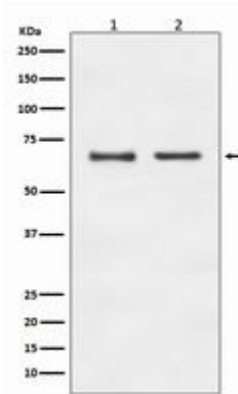
成分: PBS (without Mg²⁺ and Ca²⁺), pH 7.3 containing 50% glycerol,
0.5% BSA and 0.02% sodium azide

研究领域: Epigenetics and Nuclear Signaling

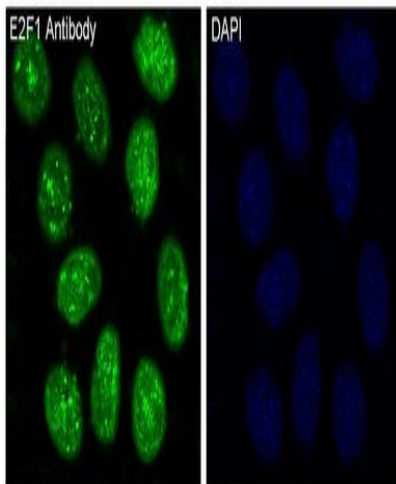
储存和运输: Store at -20°C. Avoid repeated freezing and thawing



Immunohistochemistry analysis of paraffin-embedded Human ovary carcinoma using E2F1 antibody. High-pressure and temperature Sodium Citrate pH 6.0 was used for antigen retrieval.



Western blot analysis of E2F1 in (1) HeLa lysates; (2) NIH/3T3 lysates using E2F1 antibody.



Immunofluorescence analysis of E2F1 in HeLa using E2F1 antibody.