

E2F1 RABBIT MAB

货号: N262152

产品全名: E2F1 兔单克隆抗体

基因符号 E2F1; RBBP3; Transcription factor E2F1; E2F-1; PBR3;
Retinoblastoma-associated protein 1; RBAP-1; Retinoblastoma-binding
protein 3; RBBP-3; pRB-binding protein E2F-1

UNIPROT ID: Q01094

背景: The protein encoded by this gene is a member of the E2F family of transcription factors. The E2F family plays a crucial role in the control of cell cycle and action of tumor suppressor proteins and is also a target of the transforming proteins of small DNA tumor viruses.

抗原: A synthetic peptide of human E2F1

经过测试的应用: WB,IHC-F,IHC-P,ICC/IF,IP

推荐稀释比: WB: 1/500-1/1000 IHC: 1/50-1/100 IF: 1/50-1/200 IP: 1/20

种属反应性: Rabbit

克隆性: Rabbit Monoclonal

克隆编号: R03-5G3

分子量: Calculated MW: 47 kDa; Observed MW: 70 kDa

亚型: IgG

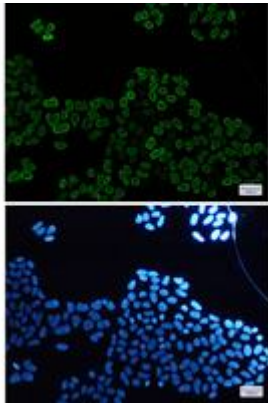
纯化: Affinity Purified

种属反应性: Human, Mouse and Rat

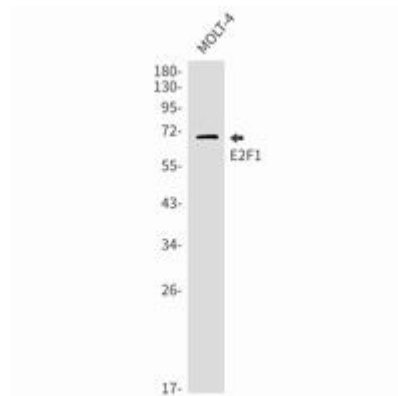
成分: PBS (without Mg²⁺ and Ca²⁺), pH 7.3 containing 50% glycerol, 0.5% BSA and 0.02% sodium azide

研究领域: Epigenetics and Nuclear Signaling

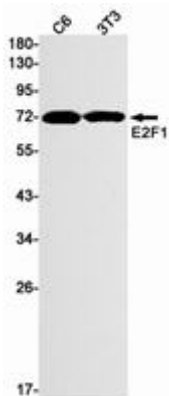
储存和运输: Store at -20°C. Avoid repeated freezing and thawing



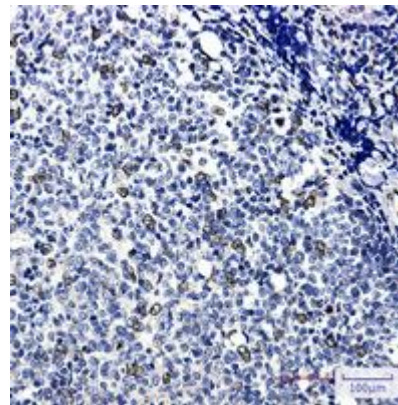
Immunocytochemistry analysis of E2F1(green) in Hela using E2F1 antibody, and DAPI(blue)



Western blot analysis of E2F1 in MOLT4 lysates using E2F1 antibody.



Western blot analysis of E2F1 in C6, 3T3 lysates using E2F1 antibody.



Immunohistochemistry analysis of paraffin-embedded Human tonsil using E2F1 antibody. High-pressure and temperature Sodium Citrate pH 6.0 was used for antigen retrieval.