

## E CADHERIN RABBIT PAB

货号: N225358

产品全名: E Cadherin 兔多抗

基因符号 CDH1; CDHE; UVO; Cadherin-1; CAM 120/80; Epithelial cadherin; E-cadherin; Uvomorulin; CD antigen CD324

**UNIPROT ID:** P12830

背景: CDH1 a single-pass type I membrane protein, and calcium dependent cell adhesion proteins. It is a ligand for integrin alpha-E/beta-7, and it colocalizes with DLG7 at sites of cell-cell contact in intestinal epithelial cells.

抗原: The antiserum was produced against synthesized peptide derived from human Cadherin. AA range:833-882

经过测试的应用: WB,IHC-F,IHC-P,ICC/IF,ELISA

推荐稀释比: WB: 1/500-1/1000 IHC: 1/50-1/100 IF: 1/50-1/200 ELISA: 1/10000

种属反应性: Rabbit

克隆性: Rabbit Polyclonal

分子量: Calculated MW: 97 kDa; Observed MW: 125-130 kDa

亚型: IgG

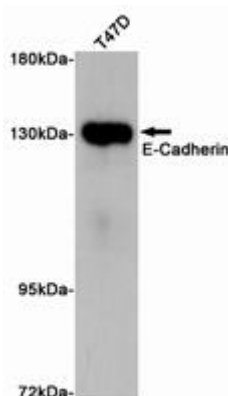
纯化: Affinity Purified

种属反应性: Human, Mouse and Rat

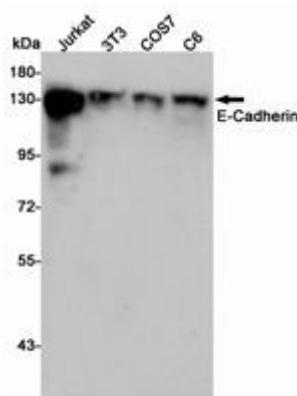
成分: PBS (without Mg<sup>2+</sup> and Ca<sup>2+</sup>), pH 7.3 containing 50% glycerol, 0.5% BSA and 0.02% sodium azide

研究领域: Signal Transduction

储存和运输: Store at -20°C. Avoid repeated freezing and thawing



Western blot analysis of E Cadherin in T47D lysates using ECadherin antibody.



Western blot analysis of ECadherin in Jurkat, 3T3, COS7 and C6 lysates using ECadherin antibody.



# Product Description

Pioneering GTPase and Oncogene Product Development since 2010

---