

## DZIP1 RABBIT PAB

货号: S221928

产品全名: DZIP1 兔多抗

基因符号: DZIP; DZIPT1

**UNIPROT ID:** Q86YF9 (Gene Accession - NP\_945319)

**背景:** DZIP1(DAZ interacting protein 1) is also known as DZIP or DZIP2 and is a 867 amino acid protein which is expressed as 3 isoforms, designated DZIPb, DZIPT1 and DZIPT2. DZIP1 is localized to testis, oocytes, ovary and fetal brain, as well as in embryonic stem cells and germ cells. In testis, DZIP1 is localized to the nucleus and also shows some cytoplasmic distribution in spermatogonia. DZIP1 belongs to the C2H2-type zinc-finger protein family, and, characteristic of the C2H2-type zinc-finger protein family, DZIP1 contains one C2H2-type zinc-finger region through which it is thought to interact with DAZ, an interaction that promotes spermiogenesis. DZIP1 expression is not found in those afflicted with Sertoli cell-only syndrome (characterized by the absence of germ cells in the testis), suggesting that the lack of DZIP1 may be involved in the pathogenesis of Sertoli cell-only syndrome-induced male sterility

**抗原:** Synthetic peptide of human DZIP1

**经过测试的应用:** ELISA, WB, IHC

**推荐稀释比:** IHC: 25-100;WB: 200-1000;ELISA: 5000-10000

**种属反应性:** Rabbit

**克隆性:** Rabbit Polyclonal

**亚型:** Immunogen-specific rabbit IgG

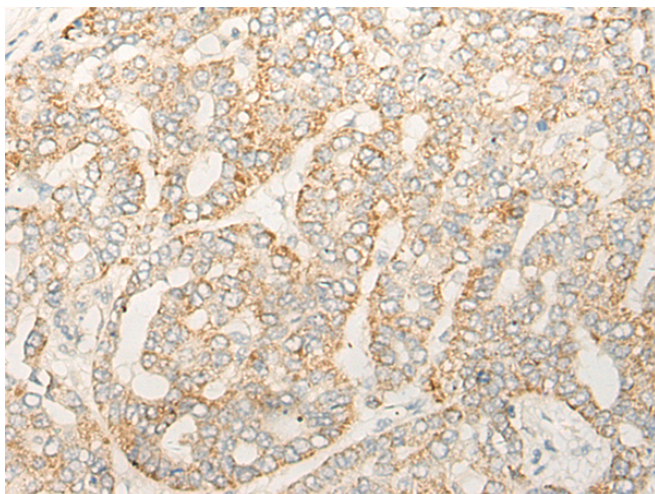
**纯化:** Antigen affinity purification

**种属反应性:** Human

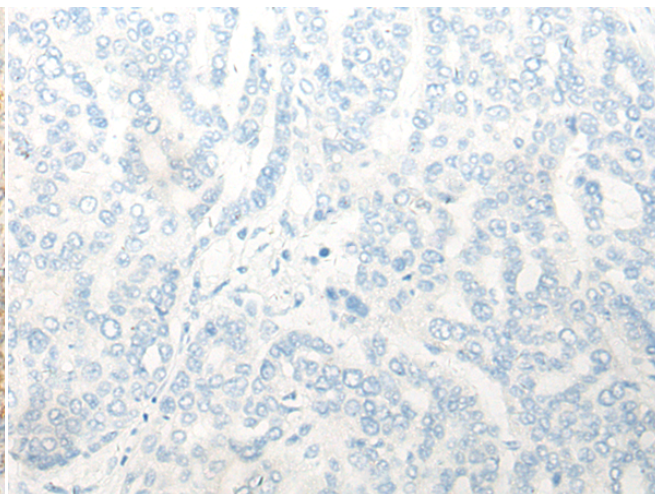
**成分:** PBS (without Mg<sup>2+</sup> and Ca<sup>2+</sup>), pH 7.4, 150 mM NaCl, 0.05% Sodium Azide and 40% glycerol

**研究领域:** Stem Cells, Developmental Biology

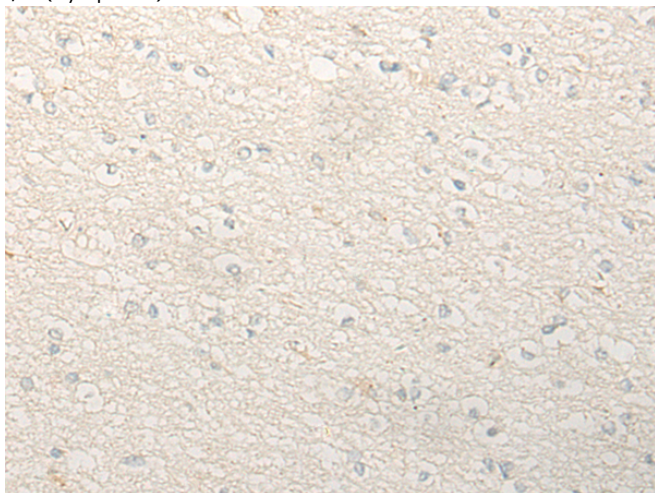
**储存和运输:** Store at -20°C. Avoid repeated freezing and thawing



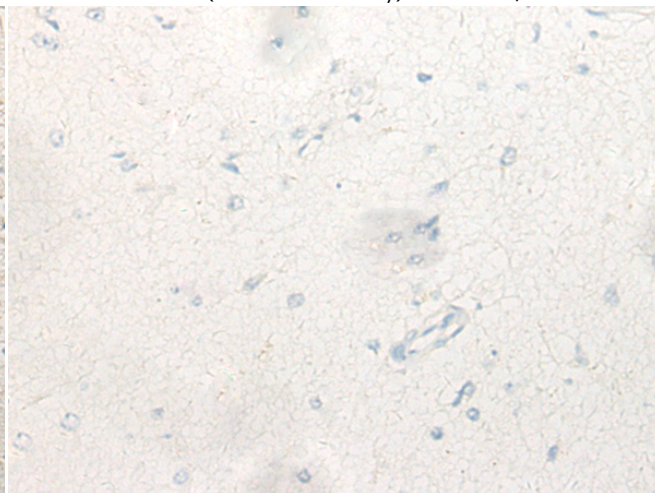
Immunohistochemistry analysis of paraffin embedded Human liver cancer tissue using 221928(DZIPI Antibody) at a dilution of 1/40(Cytoplasm).



In comparison with the IHC on the left, the same paraffin-embedded Human liver cancer tissue is first treated with the synthetic peptide and then with 221928(Anti-DZIPI Antibody) at dilution 1/40.

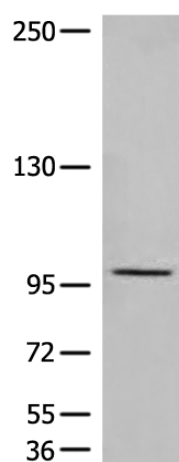


The image on the left is immunohistochemistry of paraffin-embedded Human brain tissue using 221928(Anti-DZIPI Antibody) at a dilution of 1/40.



In comparison with the IHC on the left, the same paraffin-embedded Human brain tissue is first treated with synthetic peptide and then with D263751(Anti-DZIPI Antibody) at dilution 1/40.

kDa



Gel: 6%SDS-PAGE, Lysate: 40 µg;  
 Lane: PC-3 cell lysate;  
 Primary antibody: 221928(DZIPI Antibody) at dilution 1/200;  
 Secondary antibody: Goat anti rabbit IgG at 1/8000 dilution;  
 Exposure time: 5 minutes



# Product Description

Pioneering GTPase and Oncogene Product Development since 2010

---