

DUSP26 RABBIT PAB

货号: S217375

产品全名: DUSP26 兔多抗

基因符号 MKP8; LDP-4; NATA1; SKRP3; DUSP24

UNIPROT ID: Q9BV47 (Gene Accession - BC001613)

背景: DUSP26, also designated LDP4, MKP8, NATA1 and SKRP3, is ubiquitously expressed in brain except in the hippocampus. DUSP26 dephosphorylates p38 thereby inhibiting p38-mediated apoptosis in anaplastic thyroid cancer cells. Downregulation of DUSP26 may also contribute to malignant phenotypes of glioma.

抗原: Fusion protein of human DUSP26

经过测试的应用: ELISA, IHC

推荐稀释比: IHC: 50-200; ELISA: 2000-5000

种属反应性: Rabbit

克隆性: Rabbit Polyclonal

亚型: Immunogen-specific rabbit IgG

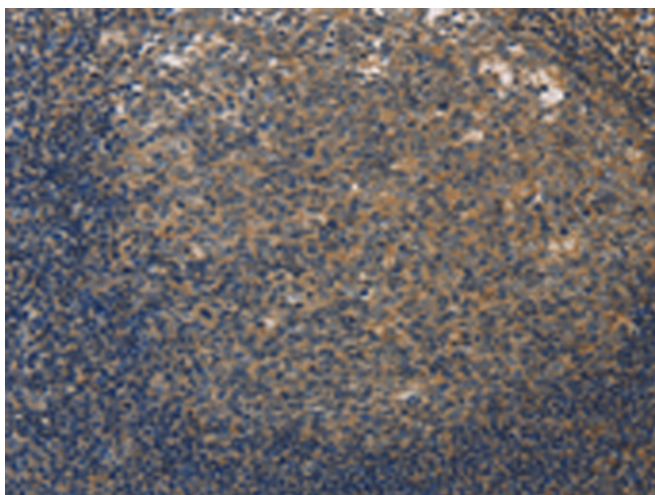
纯化: Antigen affinity purification

种属反应性: Human, Mouse, Rat

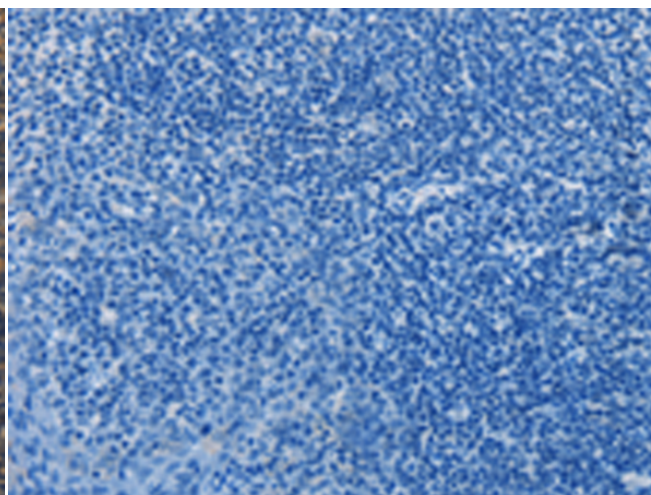
成分: PBS (without Mg²⁺ and Ca²⁺), pH 7.4, 150 mM NaCl, 0.05% Sodium Azide and 40% glycerol

研究领域: Signal Transduction, Cancer, Neuroscience

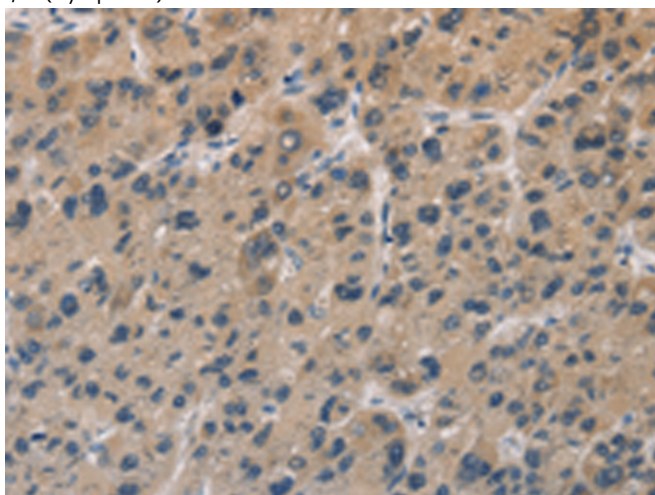
储存和运输: Store at -20°C. Avoid repeated freezing and thawing



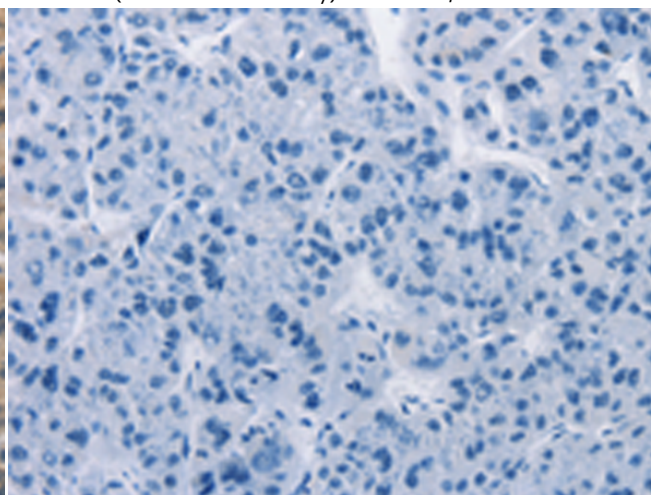
Immunohistochemistry analysis of paraffin embedded Human tonsil tissue using 217375(DUSP26 Antibody) at a dilution of 1/50(Cytoplasm).



In comparison with the IHC on the left, the same paraffin-embedded Human tonsil tissue is first treated with the fusion protein and then with 217375(Anti-DUSP26 Antibody) at dilution 1/50.



The image on the left is immunohistochemistry of paraffin-embedded Human liver cancer tissue using 217375(Anti-DUSP26 Antibody) at a dilution of 1/50.



In comparison with the IHC on the left, the same paraffin-embedded Human liver cancer tissue is first treated with fusion protein and then with D222261(Anti-DUSP26 Antibody) at dilution 1/50.



Product Description

Pioneering GTPase and Oncogene Product Development since 2010
