

DUSP12 RABBIT PAB

货号: S216500

产品全名: DUSP12 兔多抗

基因符号 YVHI; DUSP1

UNIPROT ID: Q9UNI6 (Gene Accession - BC006286)

背景: The protein encoded by this gene is a member of the dual specificity protein phosphatase subfamily. These phosphatases inactivate their target kinases by dephosphorylating both the phosphoserine/threonine and phosphotyrosine residues. They negatively regulate members of the mitogen-activated protein (MAP) kinase superfamily (MAPK/ERK, SAPK/JNK, p38), which is associated with cellular proliferation and differentiation. Different members of the family of dual specificity phosphatases show distinct substrate specificities for various MAP kinases, different tissue distribution and subcellular localization, and different modes of inducibility of their expression by extracellular stimuli. This gene product is the human ortholog of the *Saccharomyces cerevisiae* YVH1 protein tyrosine phosphatase. It is localized predominantly in the nucleus, and is novel in that it contains, and is regulated by a zinc finger domain.

抗原: Fusion protein of human DUSP12

经过测试的应用: ELISA, WB, IHC

推荐稀释比: IHC: 100-200; WB: 1000-5000; ELISA: 5000-10000

种属反应性: Rabbit

克隆性: Rabbit Polyclonal

亚型: Immunogen-specific rabbit IgG

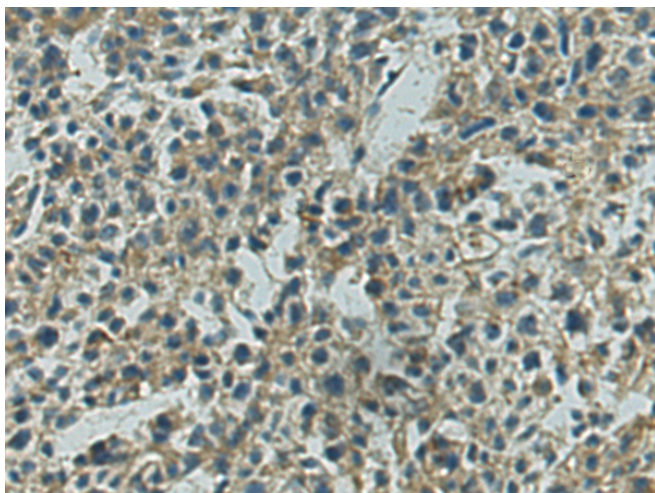
纯化: Antigen affinity purification

种属反应性: Human, Mouse, Rat

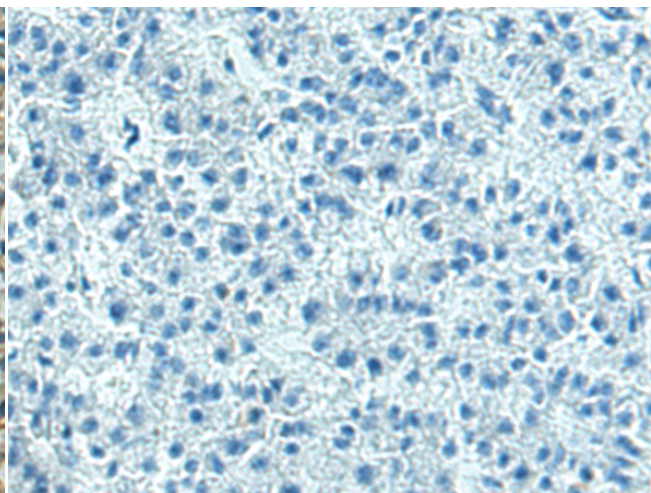
成分: PBS (without Mg²⁺ and Ca²⁺), pH 7.4, 150 mM NaCl, 0.05% Sodium Azide and 40% glycerol

研究领域: Signal Transduction

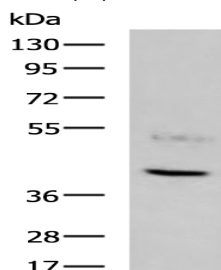
储存和运输: Store at -20°C. Avoid repeated freezing and thawing



Immunohistochemistry analysis of paraffin embedded Human liver cancer tissue using 216500 (DUSP12 Antibody) at a dilution of 1/120 (Cytoplasm).



In comparison with the IHC on the left, the same paraffin-embedded Human liver cancer tissue is first treated with the fusion protein and then with 216500 (Anti-DUSP12 Antibody) at dilution 1/120.



Gel: 8% SDS-PAGE, Lysate: 40 µg;

Lane: HeLa cell lysate;

Primary antibody: 216500 (DUSP12 Antibody) at dilution 1/900;

Secondary antibody: HRP-conjugated Goat anti rabbit IgG at 1/5000 dilution;

Exposure time: 4 minutes



Product Description

Pioneering GTPase and Oncogene Product Development since 2010
