

## DTX1 RABBIT PAB

货号: S219743

产品全名: DTX1 兔多抗

基因符号: hDx-1; RNFI40

**UNIPROT ID:** Q86Y01 (Gene Accession - NP\_004407)

**背景:** Studies in *Drosophila* have identified this gene as encoding a positive regulator of the Notch-signaling pathway. The human gene encodes a protein of unknown function; however, it may play a role in basic helix-loop-helix transcription factor activity.

**抗原:** Synthetic peptide of human DTX1

**经过测试的应用:** ELISA, IHC

**推荐稀释比:** IHC: 25-100; ELISA: 1000-10000

**种属反应性:** Rabbit

**克隆性:** Rabbit Polyclonal

**亚型:** Immunogen-specific rabbit IgG

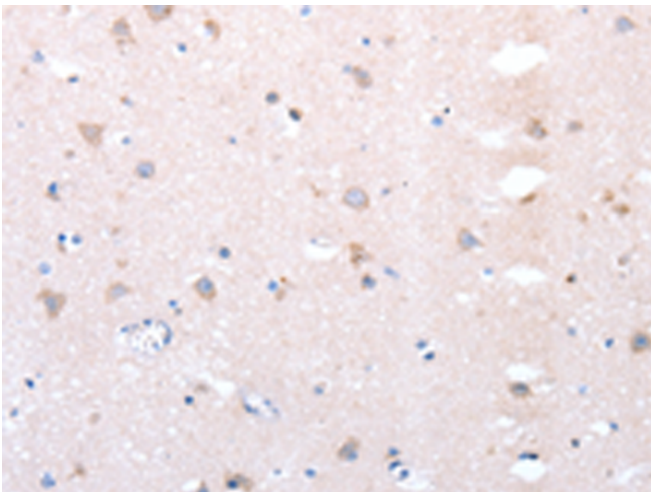
**纯化:** Antigen affinity purification

**种属反应性:** Human, Mouse

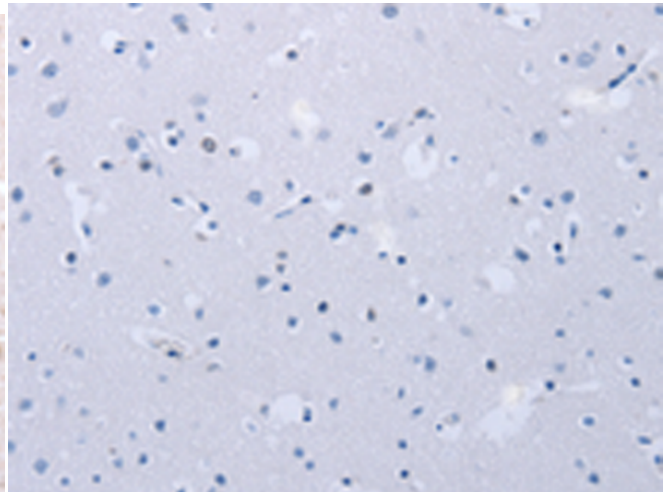
**成分:** PBS (without Mg<sup>2+</sup> and Ca<sup>2+</sup>), pH 7.4, 150 mM NaCl, 0.05% Sodium Azide and 40% glycerol

**研究领域:** Epigenetics and Nuclear Signaling, Cell Biology, Neuroscience

**储存和运输:** Store at -20°C. Avoid repeated freezing and thawing



Immunohistochemistry analysis of paraffin embedded Human brain tissue using 219743(DTX1 Antibody) at a dilution of 1/20(Cytoplasm).



In comparison with the IHC on the left, the same paraffin-embedded Human brain tissue is first treated with the synthetic peptide and then with 219743(Anti-DTX1 Antibody) at dilution 1/20.