

DTL RABBIT PAB

货号: S218464

产品全名: DTL 兔多抗

基因符号: CDT2; RAMP; DCAF2; L2DTL

UNIPROT ID: Q9NZJ0 (Gene Accession - BC033540)

背景: Contributes to ubiquitin-protein transferase activity. Involved in several processes, including protein ubiquitination; regulation of G2/M transition of mitotic cell cycle; and translesion synthesis. Located in centrosome; cytosol; and nuclear lumen. Part of Cul4A-RING E3 ubiquitin ligase complex and Cul4B-RING E3 ubiquitin ligase complex.

抗原: Fusion protein of human DTL

经过测试的应用: ELISA, IHC

推荐稀释比: IHC: 50-200; ELISA: 5000-10000

种属反应性: Rabbit

克隆性: Rabbit Polyclonal

亚型: Immunogen-specific rabbit IgG

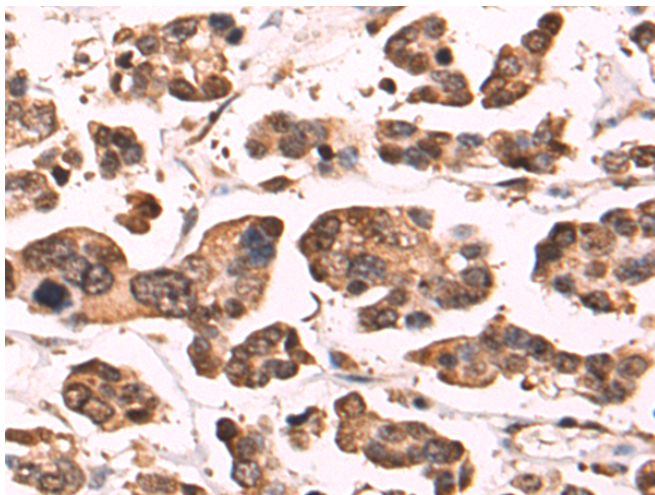
纯化: Antigen affinity purification

种属反应性: Human, Mouse

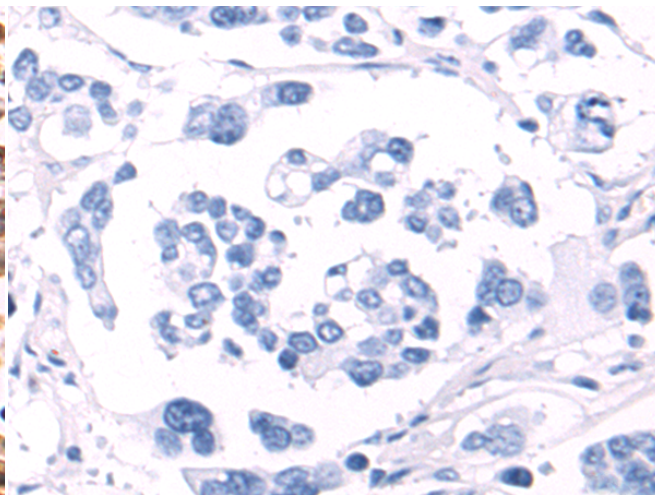
成分: PBS (without Mg²⁺ and Ca²⁺), pH 7.4, 150 mM NaCl, 0.05% Sodium Azide and 40% glycerol

研究领域: Cancer, Cell Biology

储存和运输: Store at -20°C. Avoid repeated freezing and thawing



Immunohistochemistry analysis of paraffin embedded Human colorectal cancer tissue using 218464(DTL Antibody) at a dilution of 1/70(Cytoplasm and Nucleus).



In comparison with the IHC on the left, the same paraffin-embedded Human colorectal cancer tissue is first treated with the fusion protein and then with 218464(Anti-DTL Antibody) at dilution 1/70.