

DRD4 RABBIT PAB

货号: S219734

产品全名: DRD4 兔多抗

基因符号: D4DR

UNIPROT ID: P21917 (Gene Accession - NP_000788)

背景: This gene encodes the D4 subtype of the dopamine receptor. The D4 subtype is a G-protein coupled receptor which inhibits adenylyl cyclase. It is a target for drugs which treat schizophrenia and Parkinson disease. Mutations in this gene have been associated with various behavioral phenotypes, including autonomic nervous system dysfunction, attention deficit/hyperactivity disorder, and the personality trait of novelty seeking. This gene contains a polymorphic number (2-10 copies) of tandem 48 nt repeats; the sequence shown contains four repeats.

抗原: Synthetic peptide of human DRD4

经过测试的应用: ELISA, WB, IHC

推荐稀释比: IHC: 20-May;WB: 500-1000;ELISA: 500-5000

种属反应性: Rabbit

克隆性: Rabbit Polyclonal

亚型: Immunogen-specific rabbit IgG

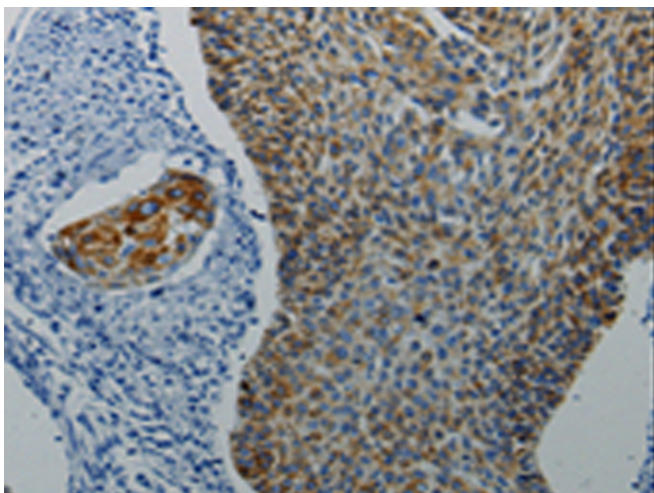
纯化: Antigen affinity purification

种属反应性: Human, Mouse

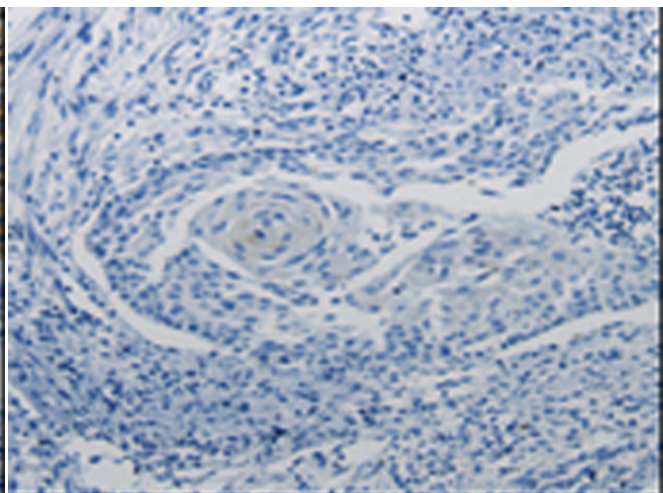
成分: PBS (without Mg²⁺ and Ca²⁺), pH 7.4, 150 mM NaCl, 0.05% Sodium Azide and 40% glycerol

研究领域: Neuroscience

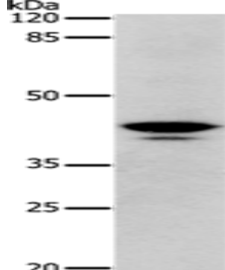
储存和运输: Store at -20°C. Avoid repeated freezing and thawing



Immunohistochemistry analysis of paraffin embedded Human cervical cancer tissue using 219734 (DRD4 Antibody) at a dilution of 1/5 (Cytoplasm, Cell membrane).



In comparison with the IHC on the left, the same paraffin-embedded Human cervical cancer tissue is first treated with the synthetic peptide and then with 219734 (Anti-DRD4 Antibody) at dilution 1/5.



Gel: 10% SDS-PAGE, Lysate: 30 µg;
Lane: Mouse skeletal muscle tissue;
Primary antibody: 219734 (DRD4 Antibody) at dilution 1/350;
Secondary antibody: Goat anti rabbit IgG at 1/8000 dilution;
Exposure time: 1 minute