

## DPYSL5 RABBIT PAB

货号: S219561

产品全名: DPYSL5 兔多抗

基因符号: CV2; CRAM; CRMP5; Ulip6; CRMP-5

**UNIPROT ID:** Q9BPU6 (Gene Accession - BC002874)

**背景:** This gene encodes a member of the CRMP (collapsing response mediator protein) family thought to be involved in neural development. Antibodies to the encoded protein were found in some patients with neurologic symptoms who had paraneoplastic syndrome. A pseudogene of this gene is found on chromosome 11. Multiple alternatively spliced variants, encoding the same protein, have been identified.

**抗原:** Fusion protein of human DPYSL5

**经过测试的应用:** ELISA, WB, IHC

**推荐稀释比:** IHC: 100-300;WB: 1000-5000;ELISA: 5000-10000

**种属反应性:** Rabbit

**克隆性:** Rabbit Polyclonal

**亚型:** Immunogen-specific rabbit IgG

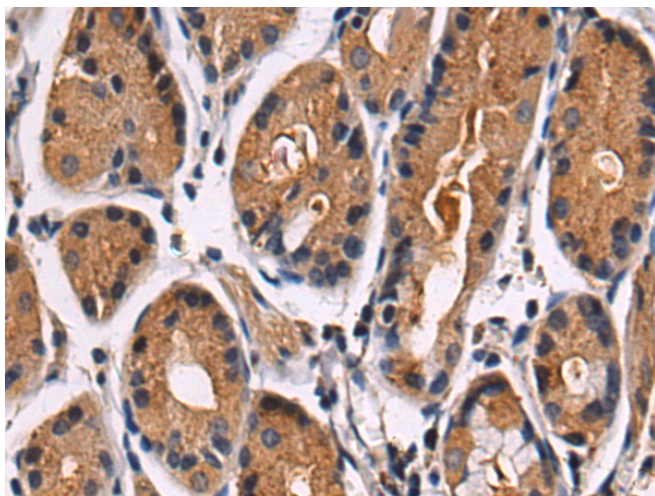
**纯化:** Antigen affinity purification

**种属反应性:** Human, Mouse, Rat

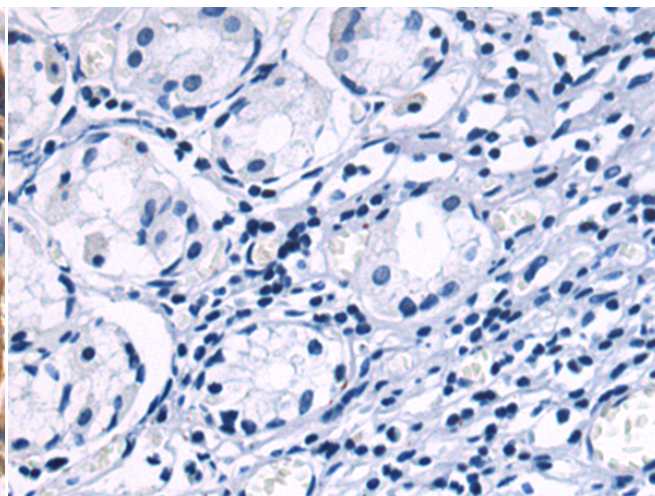
**成分:** PBS (without Mg<sup>2+</sup> and Ca<sup>2+</sup>), pH 7.4, 150 mM NaCl, 0.05% Sodium Azide and 40% glycerol

**研究领域:** Neuroscience

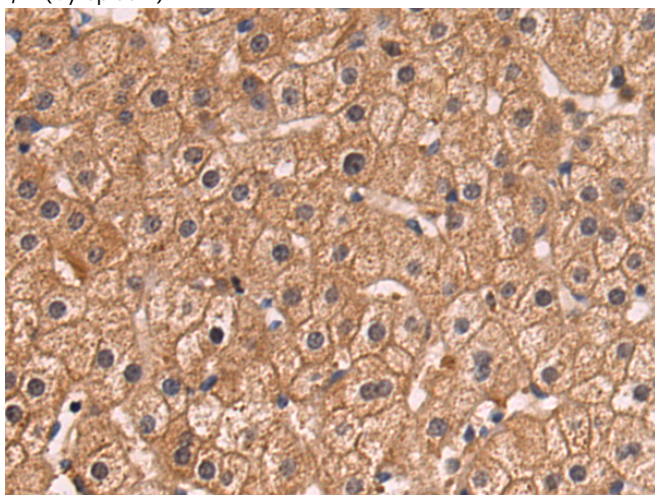
**储存和运输:** Store at -20°C. Avoid repeated freezing and thawing



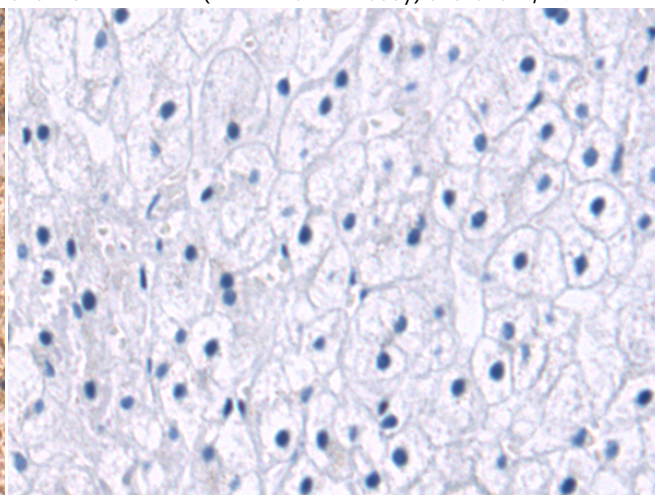
Immunohistochemistry analysis of paraffin embedded Human gastric cancer tissue using 219561(DPYSL5 Antibody) at a dilution of 1/90(Cytoplasm).



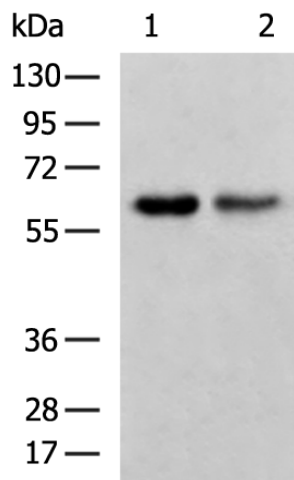
In comparison with the IHC on the left, the same paraffin-embedded Human gastric cancer tissue is first treated with the fusion protein and then with 219561(Anti-DPYSL5 Antibody) at dilution 1/90.



The image on the left is immunohistochemistry of paraffin-embedded Human liver cancer tissue using 219561(Anti-DPYSL5 Antibody) at a dilution of 1/90.



In comparison with the IHC on the left, the same paraffin-embedded Human liver cancer tissue is first treated with fusion protein and then with D227763(Anti-DPYSL5 Antibody) at dilution 1/90.



Gel: 8%SDS-PAGE, Lysate: 40 µg;  
 Lane 1-2: Mouse brain tissue, Human cerebella tissue lysates;  
 Primary antibody: 219561(DPYSL5 Antibody) at dilution 1/1150;  
 Secondary antibody: HRP-conjugated Goat anti rabbit IgG at 1/5000 dilution;  
 Exposure time: 5 seconds



# Product Description

Pioneering GTPase and Oncogene Product Development since 2010

---