

DPYSL3 RABBIT PAB

货号: S218704

产品全名: DPYSL3 兔多抗

基因符号: DRP3; ULIP; CRMP4; DRP-3; LCRMP; CRMP-4; ULIP-1

UNIPROT ID: Q14195 (Gene Accession - BC039006)

背景: Necessary for signaling by class 3 semaphorins and subsequent remodeling of the cytoskeleton. Plays a role in axon guidance, neuronal growth cone collapse and cell migration (By similarity).

抗原: Fusion protein of human DPYSL3

经过测试的应用: ELISA, WB, IHC

推荐稀释比: IHC: 50-100;WB: 1000-5000;ELISA: 5000-10000

种属反应性: Rabbit

克隆性: Rabbit Polyclonal

亚型: Immunogen-specific rabbit IgG

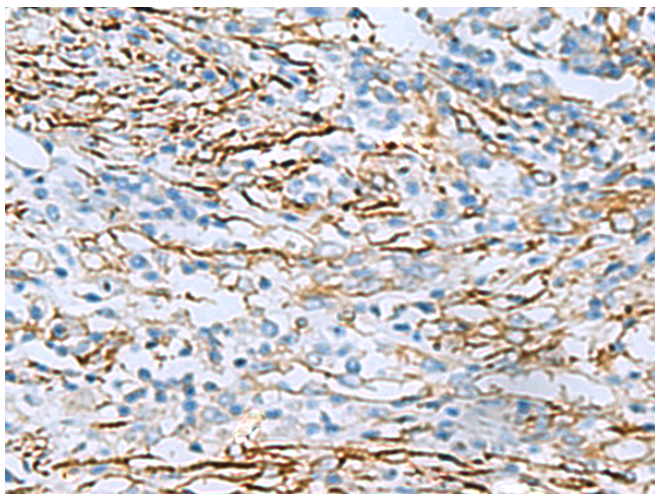
纯化: Antigen affinity purification

种属反应性: Human, Mouse, Rat

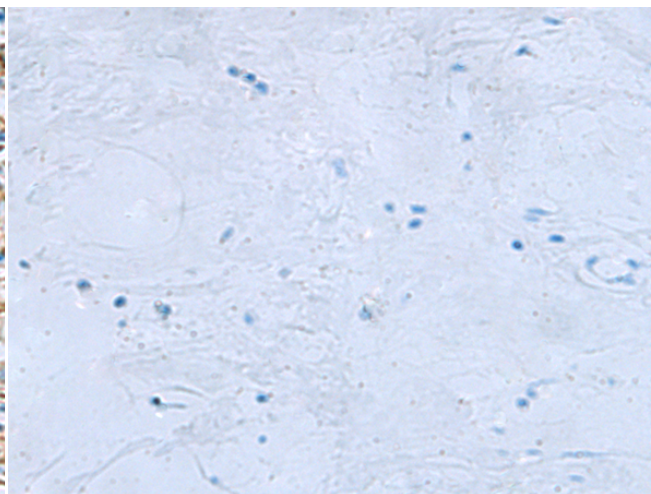
成分: PBS (without Mg²⁺ and Ca²⁺), pH 7.4, 150 mM NaCl, 0.05% Sodium Azide and 40% glycerol

研究领域: Neuroscience

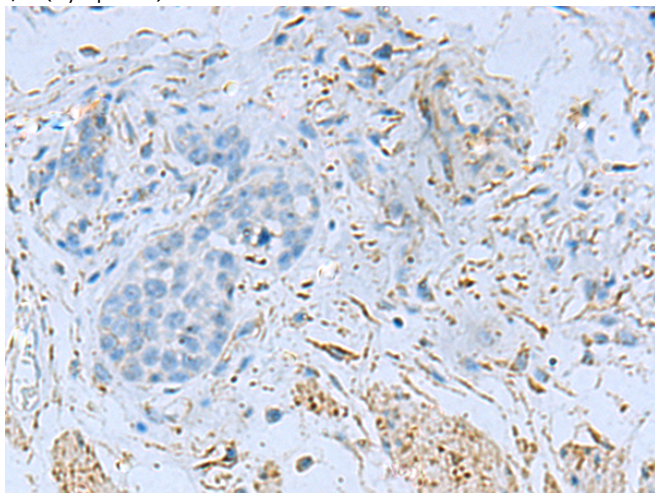
储存和运输: Store at -20°C. Avoid repeated freezing and thawing



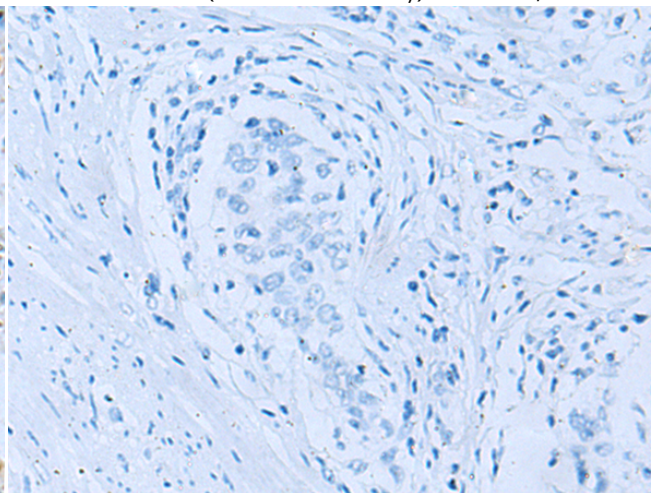
Immunohistochemistry analysis of paraffin embedded Human breast cancer tissue using 218704 (DPYSL3 Antibody) at a dilution of 1/55 (Cytoplasm).



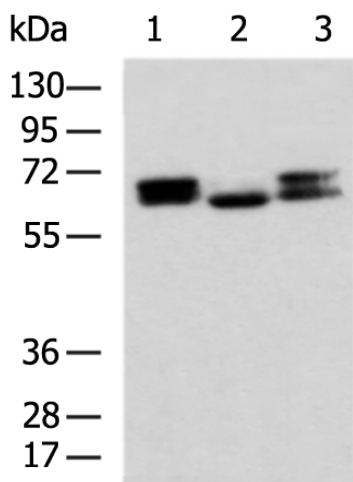
In comparison with the IHC on the left, the same paraffin-embedded Human breast cancer tissue is first treated with the fusion protein and then with 218704 (Anti-DPYSL3 Antibody) at dilution 1/55.



The image on the left is immunohistochemistry of paraffin-embedded Human esophagus cancer tissue using 218704 (Anti-DPYSL3 Antibody) at a dilution of 1/55.



In comparison with the IHC on the left, the same paraffin-embedded Human esophagus cancer tissue is first treated with fusion protein and then with D225022 (Anti-DPYSL3 Antibody) at dilution 1/55.



Gel: 8% SDS-PAGE, Lysate: 40 µg;
 Lane 1-3: Mouse brain tissue, Human cerebella tissue, Human cerebrum tissue lysates;
 Primary antibody: 218704 (DPYSL3 Antibody) at dilution 1/800;
 Secondary antibody: HRP-conjugated Goat anti rabbit IgG at 1/5000 dilution;
 Exposure time: 10 seconds



Product Description

Pioneering GTPase and Oncogene Product Development since 2010
