

DPS1 RABBIT MAB

货号: N262149

产品全名: DPS1 兔单克隆抗体

基因符号 Trans-prenyltransferase 1; TPT 1; Solanesyl-diphosphate synthase subunit 1; Decaprenyl-diphosphate synthase subunit 1

UNIPROT ID: Q5T2R2

背景: Decaprenyl-diphosphate synthase subunit 1

抗原: A synthetic peptide of human DPS1

经过测试的应用: WB,IP

推荐稀释比: WB: 1/500-1/1000 IP: 1/20

种属反应性: Rabbit

克隆性: Rabbit Monoclonal

克隆编号: R07-2H7

分子量: Calculated MW: 46 kDa; Observed MW: 46 kDa

亚型: IgG

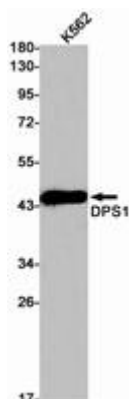
纯化: Affinity Purified

种属反应性: Human

成分: PBS (without Mg²⁺ and Ca²⁺), pH 7.3 containing 50% glycerol, 0.5% BSA and 0.02% sodium azide

研究领域: Signal Transduction

储存和运输: Store at -20°C. Avoid repeated freezing and thawing



Western blot analysis of DPS1 in K562 lysates using DPS1 antibody.